



CM CLARIFICATION BULLETIN #1

BULLETIN NO:	ONE (1)	DATE:	September 11, 2023
PROJECT:	KCCD – BAKERSFIELD COLLEGE AGRICULTURAL ACCESSORIES BUILDINGS		
PROJECT NO:	CCC #23-009.01, ARCH #20-11701.01		
DISTRICT:	KERN COMMUNITY COLLEGE DISTRICT		
ARCHITECT:	TETER LLP		
CONSTRUCTION MANAGER	COLOMBO CONSTRUCTION CO., INC. 3211 Rio Mirada Drive Bakersfield, CA 93308 661-316-0100	BID DATE:	September 14, 2023 @ 2:00 P.M.

NOTICE TO ALL CONTRACTORS SUBMITTING BIDS FOR THIS WORK AND TO ALL PLAN HOLDERS:

You are hereby notified of the following changes, clarifications, or modifications to the original Manual/Forms/Plans. This Bulletin shall supersede the original Manual/Forms/Plans, and previous CM Bulletins where it contradicts the same and shall take precedence over anything to the contrary therein. All other conditions remain unchanged.

ITEM 1 – REVISE BID ROOM LOCATION:

- The bid location for this bid will be:
 - Kern Community College District, 2100 Chester Avenue, Room 106 “Launch Pad”, Bakersfield, CA 93301.

ITEM 2 – SCHEDULE:

- Please see the attached schedule dated September 11, 2023, labeled CMC-01, Att 01-Schedule.

ITEM 3 – CM DOCUMENTS – ALL CONTRACTORS:

- Please see the attached CM Exhibit B – Site Logistics Plan, labeled CMC-01, Att 02-Site Logistics Plan.
- Please see the revised CM Index of Documents, labeled CMC-01, Att 03-Index of Documents.
- Please see the attached Non-Mandatory Job Walk Sign-In Sheet, labeled CMC-01, Att 04-Sign-In Sheet.

COLOMBO CONSTRUCTION CO., INC.

Joe Ballard

Joe Ballard,
Vice President, Operations

CM Clarification 1 - Page 1 of 1
Kern Community College District

K:\Common\JOBS\2023\23-009.01 KCCD BC Ag Acc Bldgs\00-Preconstruction\06-Clarifications\CM Clarification 01\Final\CM Clarification 1.docx

BC AG Sciences Accessory Buildings - Baseline / Bid			All Activities												11-Sep-23		
Activity ID	Bid Packages General	Activity Name	Original Duration	Start	Finish	2024											
						Jul	Aug	Sep	Oct	Nov	Dec	Jan	Feb	Mar	Apr	May	Jun
BC AG Sciences Accessory Buildings - Baseline / Bid			285	31-Jul-23	12-Sep-24												
Milestones			228	18-Oct-23	12-Sep-24												
MS-01	CM	NTP to Prime Contractors (Pre-Construction)	0		18-Oct-23	◆ NTP to Prime Contractors (Pre-Construction)											
MS-32	CM	Construction Duration	330	19-Oct-23	12-Sep-24	Construct											
MS-02	CM	Demolition Complete	0		15-Nov-23	◆ Demolition Complete											
MS-2	CM	Storage Bay Complete	0		09-Aug-24	◆ Storage Bay Complete											
MS-12	CM	Greenhouse / Shade House Complete	0		14-Aug-24	◆ Greenhouse / Shade											
MS-22	CM	Project Completion	0		12-Sep-24	◆ Project Co											
Pre-Construction Activites			285	31-Jul-23	12-Sep-24												
PCA-1010	CM	Advertise Project (Pre-Construction)	1	31-Jul-23	31-Jul-23	Advertise Project (Pre-Construction)											
PCA-1020	Prime Cont.	Bid Project (Pre-Construction)	32	31-Jul-23	13-Sep-23	■ Bid Project (Pre-Construction)											
PCA-1030	Prime Cont.	Pre-Construction Job Walk (Pre-Construction)	1	17-Aug-23	17-Aug-23	Pre-Construction Job Walk (Pre-Construction)											
PCA-1040	Prime Cont.	Bids Due (Pre-Construction)	1	14-Sep-23	14-Sep-23	Bids Due (Pre-Construction)											
PCA-1050	CM / District	Review Bids with District (Pre-Construction)	2	15-Sep-23	18-Sep-23	■ Review Bids with District (Pre-Construction)											
PCA-1060	CM	Bid Recommendations to District for Board Meeting (Pre-Construction)	1	19-Sep-23	19-Sep-23	Bid Recommendations to District for Board Meeting (Pre-Construction)											
PCA-1071	CM	Prepare Contracts	20	19-Sep-23	16-Oct-23	■ Prepare Contracts											
PCA-1061	District	District Award Contracts (Pre-Construction)	1	17-Oct-23	17-Oct-23	District Award Contracts (Pre-Construction)											
PCA-1070	CM	NTP to Prime Contractors (Pre-Construction)	1	18-Oct-23	18-Oct-23	NTP to Prime Contractors (Pre-Construction)											
PCA-1080	District	SWPPP Plan Uploaded to the State (Pre-Construction)	10	18-Oct-23	31-Oct-23	■ SWPPP Plan Uploaded to the State (Pre-Construction)											
PCA-1090	Prime Cont.	SVAPCD Dust Control Notification (Pre-Construction)	10	18-Oct-23	31-Oct-23	■ SVAPCD Dust Control Notification (Pre-Construction)											
PCA-1110	Prime Cont.	Mobilization (Pre-Construction)	10	19-Oct-23	01-Nov-23	■ Mobilization (Pre-Construction)											
PCA-1100	Prime Cont.	USA (Underground Service Alert) (Pre-Construction)	3	01-Nov-23	03-Nov-23	■ USA (Underground Service Alert) (Pre-Construction)											
Contractors Insurance & Safety Documents			56	19-Oct-23	10-Jan-24												
CIS-1010	01-74-000	Janitorial Cleaning (Contract, Insurance & Safety)	10	19-Oct-23	01-Nov-23	■ Janitorial Cleaning (Contract, Insurance & Safety)											
CIS-1020	02-14-000	Site Utilities (Contract, Insurance & Safety)	10	19-Oct-23	01-Nov-23	■ Site Utilities (Contract, Insurance & Safety)											
CIS-1030	02-15-000	Site Concrete (Contract, Insurance & Safety)	10	19-Oct-23	01-Nov-23	■ Site Concrete (Contract, Insurance & Safety)											
CIS-1040	02-16-000	AC Paving (Contract, Insurance & Safety)	10	19-Oct-23	01-Nov-23	■ AC Paving (Contract, Insurance & Safety)											
CIS-1050	02-23-000	Decorative-Chain Link Fence (Contract, Insurance & Safety)	10	19-Oct-23	01-Nov-23	■ Decorative-Chain Link Fence (Contract, Insurance & Safety)											
CIS-1060	02-32-000	Landscape-Irrigation (Contract, Insurance & Safety)	10	19-Oct-23	01-Nov-23	■ Landscape-Irrigation (Contract, Insurance & Safety)											

Activity ID	Bid Packages General	Activity Name	Original Duration	Start	Finish	2024														
						Jul	Aug	Sep	Oct	Nov	Dec	Jan	Feb	Mar	Apr	May	Jun	Jul	Aug	Sep
CIS-1070	03-01-000	Structural Concrete (Contract, Insurance & Safety)	10	19-Oct-23	01-Nov-23				█											
CIS-1080	04-20-000	Masonry (Contract, Insurance & Safety)	10	19-Oct-23	01-Nov-23				█											
CIS-1090	05-10-000	Structural Steel-Misc. Iron (Contract, Insurance & Safety)	10	19-Oct-23	01-Nov-23				█											
CIS-1100	06-10-000	General Construction-Doors, Frames, Hardware (Contract, Insurance & Safety)	10	19-Oct-23	01-Nov-23				█											
CIS-1110	06-40-000	Architectural Woodwork (Contract, Insurance & Safety)	10	19-Oct-23	01-Nov-23				█											
CIS-1120	07-40-000	Metal Wall Panels (Contract, Insurance & Safety)	10	19-Oct-23	01-Nov-23				█											
CIS-1130	07-50-000	PVC Roofing (Contract, Insurance & Safety)	10	19-Oct-23	01-Nov-23				█											
CIS-1140	08-30-000	Overhead Coiling Doors-Smoke Curtains (Contract, Insurance & Safety)	10	19-Oct-23	01-Nov-23				█											
CIS-1150	08-40-000	Aluminum Doors, Windows, Glass Glazing (Contract, Insurance & Safety)	10	19-Oct-23	01-Nov-23				█											
CIS-1160	09-22-000	Metal Stud Framing-Drywall/Exterior Plaster (Contract, Insurance & Safety)	10	19-Oct-23	01-Nov-23				█											
CIS-1170	09-30-000	Ceramic Tile (Contract, Insurance & Safety)	10	19-Oct-23	01-Nov-23				█											
CIS-1180	09-50-000	Acoustical Ceilings-FRP/FRL (Contract, Insurance & Safety)	10	19-Oct-23	01-Nov-23				█											
CIS-1190	09-60-000	Flooring-Carpet (Contract, Insurance & Safety)	10	19-Oct-23	01-Nov-23				█											
CIS-1200	09-90-000	Painting (Contract, Insurance & Safety)	10	19-Oct-23	01-Nov-23				█											
CIS-1210	10-00-000	Architectural Specialties (Contract, Insurance & Safety)	10	19-Oct-23	01-Nov-23				█											
CIS-1220	10-60-000	Toilet Partitions-Accessories (Contract, Insurance & Safety)	10	19-Oct-23	01-Nov-23				█											
CIS-1230	13-11-000	Greenhouse-Shadehouse (Contract, Insurance & Safety)	10	19-Oct-23	01-Nov-23				█											
CIS-1240	14-20-000	Elevators (Contract, Insurance & Safety)	10	19-Oct-23	01-Nov-23				█											
CIS-1250	15-30-000	Fire Sprinkler System (Contract, Insurance & Safety)	10	19-Oct-23	01-Nov-23				█											
CIS-1260	15-40-000	Plumbing (Contract, Insurance & Safety)	10	19-Oct-23	01-Nov-23				█											
CIS-1270	15-70-000	HVAC-Sheet Metal (Contract, Insurance & Safety)	10	19-Oct-23	01-Nov-23				█											
CIS-1280	16-00-000	Electrical (Contract, Insurance & Safety)	10	19-Oct-23	01-Nov-23				█											
CIS-1000	02-11-000	Site Demo/Earthwork (Contract, Insurance & Safety)	10	27-Dec-23	10-Jan-24															█
Submittals			228	19-Oct-23	12-Sep-24															
Structural Concrete			102	19-Oct-23	15-Mar-24															
Mix Design			102	19-Oct-23	15-Mar-24															
SCMD-1000	03-01-000	Structural Concrete - Mix Design (Contractor Prepare)	10	19-Oct-23	01-Nov-23				█											
SCMD-1010	CM	Structural Concrete - Mix Design (CM Review)	2	02-Nov-23	03-Nov-23				█											

Prepared by Greg Morgan
Construction Scheduling Experts

Remaining Level of Effort
 Actual Work
 Critical Remaining Work
 Remaining Work
 Milestone



BC AG Sciences Accessory Buildings - Baseline / Bid				All Activities												11-Sep-23						
Activity ID	Bid Packages General	Activity Name	Original Duration	Start	Finish	2024																
						Jul	Aug	Sep	Oct	Nov	Dec	Jan	Feb	Mar	Apr	May	Jun	Jul	Aug	Sep	Oct	
SCMD-1020	AOR	Structural Concrete - Mix Design (AOR Review)	14	06-Nov-23	27-Nov-23																	
SCMD-1030	03-01-000	Structural Concrete - Mix Design (Procurement)	10	04-Mar-24	15-Mar-24																	
Reinforcing Steel			101	19-Oct-23	14-Mar-24																	
SCRS-1000	03-01-000	Structural Concrete - Reinforcing Steel (Contractor Prepare)	40	19-Oct-23	15-Dec-23																	
SCRS-1010	CM	Structural Concrete - Reinforcing Steel (CM Review)	2	18-Dec-23	19-Dec-23																	
SCRS-1020	AOR	Structural Concrete - Reinforcing Steel (AOR Review)	14	20-Dec-23	10-Jan-24																	
SCRS-1030	03-01-000	Structural Concrete - Reinforcing Steel (Procurement)	20	15-Feb-24	14-Mar-24																	
Shop Drawings and Concrete Schedule			101	19-Oct-23	14-Mar-24																	
SCC-1000	03-01-000	Structural Concrete - Shop Drawings and Concrete Schedule (Contractor Prepare)	15	19-Oct-23	08-Nov-23																	
SCC-1010	CM	Structural Concrete - Shop Drawings and Concrete Schedule (CM Review)	2	09-Nov-23	10-Nov-23																	
SCC-1020	AOR	Structural Concrete - Shop Drawings and Concrete Schedule (AOR Review)	14	13-Nov-23	04-Dec-23																	
SCC-1030	03-01-000	Structural Concrete - Shop Drawings and Concrete Schedule (Procurement)	15	23-Feb-24	14-Mar-24																	
Samples/Mockups			102	19-Oct-23	15-Mar-24																	
SCCS-1000	03-01-000	Structural Concrete - Samples/Mockups (Contractor Prepare)	30	19-Oct-23	01-Dec-23																	
SCCS-1010	CM	Structural Concrete - Samples/Mockups (CM Review)	2	04-Dec-23	05-Dec-23																	
SCCS-1020	AOR	Structural Concrete - Samples/Mockups (AOR Review)	14	06-Dec-23	26-Dec-23																	
SCCS-1030	03-01-000	Structural Concrete - Samples/Mockups (Procurement)	10	04-Mar-24	15-Mar-24																	
Cures/Vapor Barriers			100	19-Oct-23	13-Mar-24																	
SCCV-1000	03-01-000	Structural Concrete - Cures/Vapor Barriers (Contractor Prepare)	10	19-Oct-23	01-Nov-23																	
SCCV-1010	CM	Structural Concrete - Cures/Vapor Barriers (CM Review)	2	02-Nov-23	03-Nov-23																	
SCCV-1020	AOR	Structural Concrete - Cures/Vapor Barriers (AOR Review)	14	06-Nov-23	27-Nov-23																	
SCCV-1030	03-01-000	Structural Concrete - Cures/Vapor Barriers (Procurement)	15	22-Feb-24	13-Mar-24																	
Accessory Buildings			88	19-Oct-23	26-Feb-24																	
SCAB-1000	03-01-000	Structural Concrete - Accessory Buildings (Contractor Prepare)	10	19-Oct-23	01-Nov-23																	
SCAB-1010	CM	Structural Concrete - Accessory Buildings (CM Review)	2	02-Nov-23	03-Nov-23																	
SCAB-1020	AOR	Structural Concrete - Accessory Buildings (AOR Review)	14	06-Nov-23	27-Nov-23																	
SCAB-1030	03-01-000	Structural Concrete - Accessory Buildings (Procurement)	20	29-Jan-24	26-Feb-24																	
Earthwork/Demo			84	19-Oct-23	20-Feb-24																	
Earthwork			84	19-Oct-23	20-Feb-24																	
EDE-1000	02-11-000	Earthwork/Demo - Earthwork (Contractor Prepare)	10	19-Oct-23	01-Nov-23																	

Prepared by Greg Morgan
Construction Scheduling Experts

█ Remaining Level of Effort
█ Actual Work
█ Critical Remaining Work
█ Actual Level of Effort
█ Remaining Work
◆ Milestone



Activity ID	Bid Packages General	Activity Name	Original Duration	Start	Finish	2024																
						Jul	Aug	Sep	Oct	Nov	Dec	Jan	Feb	Mar	Apr	May	Jun	Jul	Aug	Sep	Oct	
EDE-1010	CM	Earthwork/Demo - Earthwork (CM Review)	2	02-Nov-23	03-Nov-23																	
EDE-1020	AOR	Earthwork/Demo - Earthwork (AOR Review)	14	06-Nov-23	27-Nov-23																	
EDE-1030	02-11-000	Earthwork/Demo - Earthwork (Procurement)	10	06-Feb-24	20-Feb-24																	
Site Clearing, Stripping, and Grubbing			84	19-Oct-23	20-Feb-24																	
ESC-1000	02-11-000	Earthwork/Demo - Site Clearing, Stripping, and Grubbing (Contractor Prepare)	10	19-Oct-23	01-Nov-23																	
ESC-1010	CM	Earthwork/Demo - Site Clearing, Stripping, and Grubbing (CM Review)	2	02-Nov-23	03-Nov-23																	
ESC-1020	AOR	Earthwork/Demo - Site Clearing, Stripping, and Grubbing (AOR Review)	14	06-Nov-23	27-Nov-23																	
ESC-1030	02-11-000	Earthwork/Demo - Site Clearing, Stripping, and Grubbing (Procurement)	5	13-Feb-24	20-Feb-24																	
Trenching, Backfill, and Compaction			84	19-Oct-23	20-Feb-24																	
ETBC-1000	02-11-000	Earthwork/Demo - Trenching, Backfill, and Compaction (Contractor Prepare)	10	19-Oct-23	01-Nov-23																	
ETBC-1010	CM	Earthwork/Demo - Trenching, Backfill, and Compaction (CM Review)	2	02-Nov-23	03-Nov-23																	
ETBC-1020	AOR	Earthwork/Demo - Trenching, Backfill, and Compaction (AOR Review)	14	06-Nov-23	27-Nov-23																	
ETBC-1030	02-11-000	Earthwork/Demo - Trenching, Backfill, and Compaction (Procurement)	5	13-Feb-24	20-Feb-24																	
Site Utilities			92	19-Oct-23	01-Mar-24																	
Manholes/Structures			46	19-Oct-23	26-Dec-23																	
SUMS-1000	02-14-000	Site Utilities - Manholes/Structures (Contractor Prepare)	15	19-Oct-23	08-Nov-23																	
SUMS-1010	CM	Site Utilities - Manholes/Structures (CM Review)	2	09-Nov-23	10-Nov-23																	
SUMS-1020	AOR	Site Utilities - Manholes/Structures (AOR Review)	14	13-Nov-23	04-Dec-23																	
SUMS-1030	02-14-000	Site Utilities - Manholes/Structures (Procurement)	15	05-Dec-23	26-Dec-23																	
Water Utility Distribution			92	19-Oct-23	01-Mar-24																	
SUWD-1000	02-14-000	Site Utilities - Water Utility Distribution (Contractor Prepare)	20	19-Oct-23	15-Nov-23																	
SUWD-1010	CM	Site Utilities -Water Utility Distribution (CM Review)	2	16-Nov-23	17-Nov-23																	
SUWD-1020	AOR	Site Utilities - Water Utility Distribution (AOR Review)	14	20-Nov-23	11-Dec-23																	
SUWD-1030	02-14-000	Site Utilities - Water Utility Distribution (Procurement)	10	16-Feb-24	01-Mar-24																	
Disinfecting Potable Water Systems			92	19-Oct-23	01-Mar-24																	
SUDPW-1000	02-14-000	Site Utilities - Disinfecting Potable Water Systems (Contractor Prepare)	15	19-Oct-23	08-Nov-23																	
SUDPW-1010	CM	Site Utilities - Disinfecting Potable Water Systems (CM Review)	2	09-Nov-23	10-Nov-23																	
SUDPW-1020	AOR	Site Utilities - Disinfecting Potable Water Systems (AOR Review)	14	13-Nov-23	04-Dec-23																	
SUDPW-1030	02-14-000	Site Utilities - Disinfecting Potable Water Systems (Procurement)	10	16-Feb-24	01-Mar-24																	
Sanitary Sewer Pipe			92	19-Oct-23	01-Mar-24																	

Prepared by Greg Morgan
Construction Scheduling Experts

█ Remaining Level of Effort
 █ Actual Work
 █ Critical Remaining Work
█ Actual Level of Effort
 █ Remaining Work
 ◆ Milestone



BC AG Sciences Accessory Buildings - Baseline / Bid						All Activities												11-Sep-23				
Activity ID	Bid Packages General	Activity Name	Original Duration	Start	Finish	2024																
						Jul	Aug	Sep	Oct	Nov	Dec	Jan	Feb	Mar	Apr	May	Jun	Jul	Aug	Sep	Oct	
SUSS-1000	02-14-000	Site Utilities - Sanitary Sewer Pipe (Contractor Prepare)	10	19-Oct-23	01-Nov-23																	
SUSS-1010	CM	Site Utilities - Sanitary Sewer Pipe (CM Review)	2	02-Nov-23	03-Nov-23																	
SUSS-1020	AOR	Site Utilities - Sanitary Sewer Pipe (AOR Review)	14	06-Nov-23	27-Nov-23																	
SUSS-1030	02-14-000	Site Utilities - Sanitary Sewer Pipe (Procurement)	10	16-Feb-24	01-Mar-24																	
Storm Drain Piping			92	19-Oct-23	01-Mar-24																	
SUSD-1000	02-14-000	Site Utilities - Storm Drain Piping (Contractor Prepare)	0	19-Oct-23	19-Oct-23																	
SUSD-1010	CM	Site Utilities - Storm Drain Piping (CM Review)	2	19-Oct-23	20-Oct-23																	
SUSD-1020	AOR	Site Utilities - Storm Drain Piping (AOR Review)	14	23-Oct-23	09-Nov-23																	
SUSD-1030	02-14-000	Site Utilities - Storm Drain Piping (Procurement)	15	09-Feb-24	01-Mar-24																	
Trenching, Backfill and Compaction			92	19-Oct-23	01-Mar-24																	
SUTBC-1000	02-14-000	Site Utilities - Trenching, Backfill and Compaction (Contractor Prepare)	10	19-Oct-23	01-Nov-23																	
SUTBC-1010	CM	Site Utilities - Trenching, Backfill and Compaction (CM Review)	2	02-Nov-23	03-Nov-23																	
SUTBC-1020	AOR	Site Utilities - Trenching, Backfill and Compaction (AOR Review)	14	06-Nov-23	27-Nov-23																	
SUTBC-1030	02-14-000	Site Utilities - Trenching, Backfill and Compaction (Procurement)	5	26-Feb-24	01-Mar-24																	
Excavation Support and Protection			92	19-Oct-23	01-Mar-24																	
SUES-1000	02-14-000	Site Utilities - Excavation Support and Protection (Contractor Prepare)	10	19-Oct-23	01-Nov-23																	
SUES-1010	CM	Site Utilities - Excavation Support and Protection (CM Review)	2	02-Nov-23	03-Nov-23																	
SUES-1020	AOR	Site Utilities - Excavation Support and Protection (AOR Review)	14	06-Nov-23	27-Nov-23																	
SUES-1030	02-14-000	Site Utilities - Excavation Support and Protection (Procurement)	10	16-Feb-24	01-Mar-24																	
Site Concrete			123	19-Oct-23	15-Apr-24																	
Sidewalks, Curbs, Gutters, and Driveways			94	19-Oct-23	05-Mar-24																	
SCSCG-1000	03-01-000	Site Concrete - Sidewalks, Curbs, Gutters, and Driveways (Contractor Prepare)	15	19-Oct-23	08-Nov-23																	
SCSCG-1010	CM	Site Concrete - Sidewalks, Curbs, Gutters, and Driveways (CM Review)	2	09-Nov-23	10-Nov-23																	
SCSCG-1020	AOR	Site Concrete - Sidewalks, Curbs, Gutters, and Driveways (AOR Review)	14	13-Nov-23	04-Dec-23																	
SCSCG-1030	03-01-000	Site Concrete - Sidewalks, Curbs, Gutters, and Driveways (Procurement)	20	06-Feb-24	05-Mar-24																	
Bicycle Racks			112	19-Oct-23	29-Mar-24																	
SCBR-1000	03-01-000	Site Concrete - Bicycle Racks (Contractor Prepare)	10	19-Oct-23	01-Nov-23																	
SCBR-1010	CM	Site Concrete - Bicycle Racks (CM Review)	2	02-Nov-23	03-Nov-23																	
SCBR-1020	AOR	Site Concrete - Bicycle Racks (AOR Review)	14	06-Nov-23	27-Nov-23																	

Activity ID	Bid Packages General	Activity Name	Original Duration	Start	Finish	2024											
						Jul	Aug	Sep	Oct	Nov	Dec	Jan	Feb	Mar	Apr	May	Jun
SCBR-1030	03-01-000	Site Concrete - Bicycle Racks (Procurement)	60	05-Jan-24	29-Mar-24	Site Concrete - Bicycle Racks (Procurement)											
Tactile/Detectable Warning Surface Tile			123	19-Oct-23	15-Apr-24												
SCTWT-1000	03-01-000	Site Concrete - Tactile/Detectable Warning Surface Tile (Contractor Prepare)	10	19-Oct-23	01-Nov-23	Site Concrete - Tactile/Detectable Warning Surface Tile (Contractor Prepare)											
SCTWT-1010	CM	Site Concrete - Tactile/Detectable Warning Surface Tile (CM Review)	2	02-Nov-23	03-Nov-23	Site Concrete - Tactile/Detectable Warning Surface Tile (CM Review)											
SCTWT-1020	AOR	Site Concrete - Tactile/Detectable Warning Surface Tile (AOR Review)	14	06-Nov-23	27-Nov-23	Site Concrete - Tactile/Detectable Warning Surface Tile (AOR Review)											
SCTWT-1030	03-01-000	Site Concrete - Tactile/Detectable Warning Surface Tile (Procurement)	20	19-Mar-24	15-Apr-24	Site Concrete - Tactile/Detectable Warning Surface Tile (Procurement)											
Concrete Paving Joint Sealants			94	19-Oct-23	05-Mar-24												
SCCJS-1000	03-01-000	Site Concrete - Concrete Paving Joint Sealants (Contractor Prepare)	10	19-Oct-23	01-Nov-23	Site Concrete - Concrete Paving Joint Sealants (Contractor Prepare)											
SCCJS-1010	CM	Site Concrete - Concrete Paving Joint Sealants (CM Review)	2	02-Nov-23	03-Nov-23	Site Concrete - Concrete Paving Joint Sealants (CM Review)											
SCCJS-1020	AOR	Site Concrete - Concrete Paving Joint Sealants (AOR Review)	14	06-Nov-23	27-Nov-23	Site Concrete - Concrete Paving Joint Sealants (AOR Review)											
SCCJS-1030	03-01-000	Site Concrete - Concrete Paving Joint Sealants (Procurement)	15	13-Feb-24	05-Mar-24	Site Concrete - Concrete Paving Joint Sealants (Procurement)											
Decorative-Chain Link Fence			228	19-Oct-23	12-Sep-24												
Decorative Metal Fences and Gates			228	19-Oct-23	12-Sep-24												
DCDF-1000	02-23-000	Decorative-Fence - Decorative Metal Fences and Gates (Contractor Prepare)	30	19-Oct-23	01-Dec-23	Decorative-Fence - Decorative Metal Fences and Gates (Contractor Prepare)											
DCDF-1010	CM	Decorative-Fence - Decorative Metal Fences and Gates (CM Review)	2	04-Dec-23	05-Dec-23	Decorative-Fence - Decorative Metal Fences and Gates (CM Review)											
DCDF-1020	AOR	Decorative-Fence - Decorative Metal Fences and Gates (AOR Review)	14	06-Dec-23	26-Dec-23	Decorative-Fence - Decorative Metal Fences and Gates (AOR Review)											
DCDF-1030	02-23-000	Decorative-Fence - Decorative Metal Fences and Gates (Procurement)	40	18-Jul-24	12-Sep-24	Decorative-Fence - Decorative Metal Fences and Gates (Procurement)											
Composition Siding			228	19-Oct-23	12-Sep-24												
DCCS-1000	02-23-000	Decorative-Fence - Composition Siding (Contractor Prepare)	30	19-Oct-23	01-Dec-23	Decorative-Fence - Composition Siding (Contractor Prepare)											
DCCS-1010	CM	Decorative-Fence - Composition Siding (CM Review)	2	04-Dec-23	05-Dec-23	Decorative-Fence - Composition Siding (CM Review)											
DCCS-1020	AOR	Decorative-Fence - Composition Siding (AOR Review)	14	06-Dec-23	26-Dec-23	Decorative-Fence - Composition Siding (AOR Review)											
DCCS-1030	02-23-000	Decorative-Fence - Composition Siding (Procurement)	40	18-Jul-24	12-Sep-24	Decorative-Fence - Composition Siding (Procurement)											
Landscape/Irrigation			137	19-Oct-23	03-May-24												
Irrigation Systems			92	19-Oct-23	01-Mar-24												
LIIS-1000	02-32-000	Landscape/Irrigation - Irrigation Systems (Contractor Prepare)	20	19-Oct-23	15-Nov-23	Landscape/Irrigation - Irrigation Systems (Contractor Prepare)											
LIIS-1010	CM	Landscape/Irrigation - Irrigation Systems (CM Review)	2	16-Nov-23	17-Nov-23	Landscape/Irrigation - Irrigation Systems (CM Review)											
LIIS-1020	AOR	Landscape/Irrigation - Irrigation Systems (AOR Review)	14	20-Nov-23	11-Dec-23	Landscape/Irrigation - Irrigation Systems (AOR Review)											
LIIS-1030	02-32-000	Landscape/Irrigation - Irrigation Systems (Procurement)	10	16-Feb-24	01-Mar-24	Landscape/Irrigation - Irrigation Systems (Procurement)											
Irrigation Systems Commissioning			133	19-Oct-23	29-Apr-24												
LIISC-1000	02-32-000	Landscape/Irrigation - Irrigation Systems Commissioning (Contractor Prepare)	10	19-Oct-23	01-Nov-23	Landscape/Irrigation - Irrigation Systems Commissioning (Contractor Prepare)											

Prepared by Greg Morgan
Construction Scheduling Experts

█ Remaining Level of Effort
 █ Actual Work
 █ Critical Remaining Work
█ Actual Level of Effort
 █ Remaining Work
 ◆ Milestone



BC AG Sciences Accessory Buildings - Baseline / Bid						All Activities												11-Sep-23				
Activity ID	Bid Packages General	Activity Name	Original Duration	Start	Finish	2024																
						Jul	Aug	Sep	Oct	Nov	Dec	Jan	Feb	Mar	Apr	May	Jun	Jul	Aug	Sep	Oct	
LIISC-1010	CM	Landscape/Irrigation - Irrigation Systems Commissioning (CM Review)	2	02-Nov-23	03-Nov-23																	
LIISC-1020	AOR	Landscape/Irrigation - Irrigation Systems Commissioning (AOR Review)	14	06-Nov-23	27-Nov-23																	
LIISC-1030	02-32-000	Landscape/Irrigation - Irrigation Systems Commissioning (Procurement)	5	23-Apr-24	29-Apr-24																	
Landscape Work			137	19-Oct-23	03-May-24																	
LILW-1000	02-32-000	Landscape/Irrigation - Landscape Work (Contractor Prepare)	30	19-Oct-23	01-Dec-23																	
LILW-1010	CM	Landscape/Irrigation - Landscape Work (CM Review)	2	04-Dec-23	05-Dec-23																	
LILW-1020	AOR	Landscape/Irrigation - Landscape Work (AOR Review)	14	06-Dec-23	26-Dec-23																	
LILW-1030	02-32-000	Landscape/Irrigation - Landscape Work (Procurement)	45	04-Mar-24	03-May-24																	
Trenching, Backfill, and Compaction			92	19-Oct-23	01-Mar-24																	
LITBC-1000	02-32-000	Landscape/Irrigation - Trenching, Backfill, and Compaction (Contractor Prepare)	10	19-Oct-23	01-Nov-23																	
LITBC-1010	CM	Landscape/Irrigation - Trenching, Backfill, and Compaction (CM Review)	2	02-Nov-23	03-Nov-23																	
LITBC-1020	AOR	Landscape/Irrigation - Trenching, Backfill, and Compaction (AOR Review)	14	06-Nov-23	27-Nov-23																	
LITBC-1030	02-32-000	Landscape/Irrigation - Trenching, Backfill, and Compaction (Procurement)	5	26-Feb-24	01-Mar-24																	
Masonry			112	19-Oct-23	29-Mar-24																	
Product Data/Shop Drawings			112	19-Oct-23	29-Mar-24																	
MPDSD-1000	04-20-000	Masonry - Product Data/Shop Drawings (Contractor Prepare)	20	19-Oct-23	15-Nov-23																	
MPDSD-1010	CM	Masonry - Product Data/Shop Drawings (CM Review)	2	16-Nov-23	17-Nov-23																	
MPDSD-1020	AOR	Masonry - Product Data/Shop Drawings (AOR Review)	14	20-Nov-23	11-Dec-23																	
MPDSD-1030	04-20-000	Masonry - Product Data/Shop Drawings (Procurement)	45	26-Jan-24	29-Mar-24																	
Certificates			112	19-Oct-23	29-Mar-24																	
MC-1000	04-20-000	Masonry - Certificates (Contractor Prepare)	20	19-Oct-23	15-Nov-23																	
MC-1010	CM	Masonry - Certificates (CM Review)	2	16-Nov-23	17-Nov-23																	
MC-1020	AOR	Masonry - Certificates (AOR Review)	14	20-Nov-23	11-Dec-23																	
MC-1030	04-20-000	Masonry - Certificates (Procurement)	45	26-Jan-24	29-Mar-24																	
Structural Steel			191	19-Oct-23	22-Jul-24																	
Structural Steel Framing			87	19-Oct-23	23-Feb-24																	
SSF-1000	05-10-000	Structural Steel - Structural Steel Framing (Contractor Prepare)	15	19-Oct-23	08-Nov-23																	
SSF-1010	CM	Structural Steel - Structural Steel Framing (CM Review)	2	09-Nov-23	10-Nov-23																	
SSF-1020	AOR	Structural Steel - Structural Steel Framing (AOR Review)	14	13-Nov-23	04-Dec-23																	
SSF-1030	05-10-000	Structural Steel - Structural Steel Framing (Procurement)	20	26-Jan-24	23-Feb-24																	

Prepared by Greg Morgan
Construction Scheduling Experts

█ Remaining Level of Effort
█ Actual Work
█ Critical Remaining Work
█ Actual Level of Effort
█ Remaining Work
◆ Milestone



Activity ID	Bid Packages General	Activity Name	Original Duration	Start	Finish	2024														
						Jul	Aug	Sep	Oct	Nov	Dec	Jan	Feb	Mar	Apr	May	Jun	Jul	Aug	Sep
Steel Decking			87	19-Oct-23	23-Feb-24															
SSSD-1000	05-10-000	Structural Steel - Steel Decking (Contractor Prepare)	15	19-Oct-23	08-Nov-23															
SSSD-1010	CM	Structural Steel - Steel Decking (CM Review)	2	09-Nov-23	10-Nov-23															
SSSD-1020	AOR	Structural Steel - Steel Decking (AOR Review)	14	13-Nov-23	04-Dec-23															
SSSD-1030	05-10-000	Structural Steel - Steel Decking (Procurement)	15	02-Feb-24	23-Feb-24															
Pipe and Tube Railings			191	19-Oct-23	22-Jul-24															
SSPT-1000	05-10-000	Structural Steel - Pipe and Tube Railings (Contractor Prepare)	25	19-Oct-23	22-Nov-23															
SSPT-1010	CM	Structural Steel - Pipe and Tube Railings (CM Review)	2	27-Nov-23	28-Nov-23															
SSPT-1020	AOR	Structural Steel - Pipe and Tube Railings (AOR Review)	14	29-Nov-23	18-Dec-23															
SSPT-1030	05-10-000	Structural Steel - Pipe and Tube Railings (Procurement)	60	26-Apr-24	22-Jul-24															
Rough Carpentry			106	19-Oct-23	21-Mar-24															
Rough Carpentry			103	19-Oct-23	18-Mar-24															
GCRC-1000	06-10-000	Rough Carpentry (Contractor Prepare)	15	19-Oct-23	08-Nov-23															
GCRC-1010	CM	Rough Carpentry (CM Review)	2	09-Nov-23	10-Nov-23															
GCRC-1020	AOR	Rough Carpentry (AOR Review)	14	13-Nov-23	04-Dec-23															
GCRC-1030	06-10-000	Rough Carpentry (Procurement)	15	27-Feb-24	18-Mar-24															
Hollow Metal Doors and Frames			106	19-Oct-23	21-Mar-24															
GCHMD-1000	08-10-000	Hollow Metal Doors and Frames (Contractor Prepare)	15	19-Oct-23	08-Nov-23															
GCHMD-1010	CM	Hollow Metal Doors and Frames (CM Review)	10	09-Nov-23	22-Nov-23															
GCHMD-1020	AOR	Hollow Metal Doors and Frames (AOR Review)	14	27-Nov-23	14-Dec-23															
GCHMD-1030	08-10-000	Hollow Metal Doors and Frames (Procurement)	40	25-Jan-24	21-Mar-24															
Door Louver and Lite Frames			106	19-Oct-23	21-Mar-24															
GCLLF-1000	08-10-000	Door Louver and Lite Frames (Contractor Prepare)	20	19-Oct-23	15-Nov-23															
GCLLF-1010	CM	Door Louver and Lite Frames (CM Review)	2	16-Nov-23	17-Nov-23															
GCLLF-1020	AOR	Door Louver and Lite Frames (AOR Review)	14	20-Nov-23	11-Dec-23															
GCLLF-1030	08-10-000	Door Louver and Lite Frames (Procurement)	20	23-Feb-24	21-Mar-24															
Door Hardware			106	19-Oct-23	21-Mar-24															
GCDH-1000	06-10-000	Door Hardware (Contractor Prepare)	20	19-Oct-23	15-Nov-23															
GCDH-1010	CM	Door Hardware (CM Review)	10	16-Nov-23	01-Dec-23															
GCDH-1020	AOR	Door Hardware (AOR Review)	14	04-Dec-23	21-Dec-23															

BC AG Sciences Accessory Buildings - Baseline / Bid				All Activities												11-Sep-23				
Activity ID	Bid Packages General	Activity Name	Original Duration	Start	Finish	2024														
						Jul	Aug	Sep	Oct	Nov	Dec	Jan	Feb	Mar	Apr	May	Jun	Jul	Aug	Sep
GCDH-1030	06-10-000	Door Hardware (Procurement)	20	23-Feb-24	21-Mar-24										■	Door Hardware (Procurement)				
Metal Wall Panels			146	19-Oct-23	16-May-24															
Self-Adhering Sheet Waterproofing			139	19-Oct-23	07-May-24															
MWSW-1000	07-40-000	Metal Wall Panels - Self-Adhering Sheet Waterproofing (Contractor Prepare)	10	19-Oct-23	01-Nov-23										■	Metal Wall Panels - Self-Adhering Sheet Waterproofing (Contractor Prepare)				
MWSW-1010	CM	Metal Wall Panels - Self-Adhering Sheet Waterproofing (CM Review)	2	02-Nov-23	03-Nov-23										■	Metal Wall Panels - Self-Adhering Sheet Waterproofing (CM Review)				
MWSW-1020	AOR	Metal Wall Panels - Self-Adhering Sheet Waterproofing (AOR Review)	14	06-Nov-23	27-Nov-23										■	Metal Wall Panels - Self-Adhering Sheet Waterproofing (AOR Review)				
MWSW-1030	07-40-000	Metal Wall Panels - Self-Adhering Sheet Waterproofing (Procurement)	10	24-Apr-24	07-May-24											■	Metal Wall Panels - Self-Adhering Sheet Waterproofing (Procurement)			
Thermal Foam-Plastic Board Wall Insulation			139	19-Oct-23	07-May-24															
MWFI-1000	07-40-000	Metal Wall Panels - Thermal Foam-Plastic Board Wall Insulation (Contractor Prepare)	10	19-Oct-23	01-Nov-23										■	Metal Wall Panels - Thermal Foam-Plastic Board Wall Insulation (Contractor Prepare)				
MWFI-1010	CM	Metal Wall Panels - Thermal Foam-Plastic Board Wall Insulation (CM Review)	2	02-Nov-23	03-Nov-23										■	Metal Wall Panels - Thermal Foam-Plastic Board Wall Insulation (CM Review)				
MWFI-1020	AOR	Metal Wall Panels - Thermal Foam-Plastic Board Wall Insulation (AOR Review)	14	06-Nov-23	27-Nov-23										■	Metal Wall Panels - Thermal Foam-Plastic Board Wall Insulation (AOR Review)				
MWFI-1030	07-40-000	Metal Wall Panels - Thermal Foam-Plastic Board Wall Insulation (Procurement)	90	02-Jan-24	07-May-24										■	Metal Wall Panels - Thermal Foam-Plastic Board Wall Insulation (Procurement)				
Weather Resistive Barriers			146	19-Oct-23	16-May-24															
MWWB-1000	07-40-000	Metal Wall Panels - Weather Resistive Barriers (Contractor Prepare)	10	19-Oct-23	01-Nov-23										■	Metal Wall Panels - Weather Resistive Barriers (Contractor Prepare)				
MWWB-1010	CM	Metal Wall Panels - Weather Resistive Barriers (CM Review)	2	02-Nov-23	03-Nov-23										■	Metal Wall Panels - Weather Resistive Barriers (CM Review)				
MWWB-1020	AOR	Metal Wall Panels - Weather Resistive Barriers (AOR Review)	14	06-Nov-23	27-Nov-23										■	Metal Wall Panels - Weather Resistive Barriers (AOR Review)				
MWWB-1030	07-40-000	Metal Wall Panels - Weather Resistive Barriers (Procurement)	10	03-May-24	16-May-24											■	Metal Wall Panels - Weather Resistive Barriers (Procurement)			
Formed Metal Wall Panels			146	19-Oct-23	16-May-24															
MWFMW-1000	07-40-000	Metal Wall Panels - Formed Metal Wall Panels (Contractor Prepare)	40	19-Oct-23	15-Dec-23										■	Metal Wall Panels - Formed Metal Wall Panels (Contractor Prepare)				
MWFMW-1010	CM	Metal Wall Panels - Formed Metal Wall Panels (CM Review)	2	18-Dec-23	19-Dec-23										■	Metal Wall Panels - Formed Metal Wall Panels (CM Review)				
MWFMW-1020	AOR	Metal Wall Panels - Formed Metal Wall Panels (AOR Review)	14	20-Dec-23	10-Jan-24										■	Metal Wall Panels - Formed Metal Wall Panels (AOR Review)				
MWFMW-1030	07-40-000	Metal Wall Panels - Formed Metal Wall Panels (Procurement)	90	11-Jan-24	16-May-24										■	Metal Wall Panels - Formed Metal Wall Panels (Procurement)				
Sheet Metal Flashing and Trim			126	19-Oct-23	18-Apr-24															
MWFT-1000	07-40-000	Metal Wall Panels - Sheet Metal Flashing and Trim (Contractor Prepare)	20	19-Oct-23	15-Nov-23										■	Metal Wall Panels - Sheet Metal Flashing and Trim (Contractor Prepare)				
MWFT-1010	CM	Metal Wall Panels - Sheet Metal Flashing and Trim (CM Review)	2	16-Nov-23	17-Nov-23										■	Metal Wall Panels - Sheet Metal Flashing and Trim (CM Review)				
MWFT-1020	AOR	Metal Wall Panels - Sheet Metal Flashing and Trim (AOR Review)	14	20-Nov-23	11-Dec-23										■	Metal Wall Panels - Sheet Metal Flashing and Trim (AOR Review)				
MWFT-1030	07-40-000	Metal Wall Panels - Sheet Metal Flashing and Trim (Procurement)	90	12-Dec-23	18-Apr-24										■	Metal Wall Panels - Sheet Metal Flashing and Trim (Procurement)				
Asphalt Chingle Roofing			109	19-Oct-23	26-Mar-24															
Asphalt Shingles			109	19-Oct-23	26-Mar-24															
PAS-1000	07-50-000	Asphalt Shingles (Contractor Prepare)	10	19-Oct-23	01-Nov-23										■	Asphalt Shingles (Contractor Prepare)				

Prepared by Greg Morgan
Construction Scheduling Experts

■ Remaining Level of Effort
■ Actual Work
■ Critical Remaining Work
■ Actual Level of Effort
■ Remaining Work
◆ Milestone



BC AG Sciences Accessory Buildings - Baseline / Bid						All Activities												11-Sep-23				
Activity ID	Bid Packages General	Activity Name	Original Duration	Start	Finish	2024																
						Jul	Aug	Sep	Oct	Nov	Dec	Jan	Feb	Mar	Apr	May	Jun	Jul	Aug	Sep	Oct	
PAS-1010	CM	Asphalt Shingles (CM Review)	2	02-Nov-23	03-Nov-23																	
PAS-1020	AOR	Asphalt Shingles (AOR Review)	14	06-Nov-23	27-Nov-23																	
PAS-1030	07-50-000	Asphalt Shingles (Procurement)	5	20-Mar-24	26-Mar-24																	
Overhead Doors			191	19-Oct-23	22-Jul-24																	
Overhead Coiling Doors			191	19-Oct-23	22-Jul-24																	
ODCD-1000	08-30-000	Overhead Doors - Overhead Coiling Doors (Contractor Prepare)	20	19-Oct-23	15-Nov-23																	
ODCD-1010	CM	Overhead Doors - Overhead Coiling Doors (CM Review)	2	16-Nov-23	17-Nov-23																	
ODCD-1020	AOR	Overhead Doors - Overhead Coiling Doors (AOR Review)	14	20-Nov-23	11-Dec-23																	
ODCD-1030	08-30-000	Overhead Doors - Overhead Coiling Doors (Procurement)	45	17-May-24	22-Jul-24																	
Alum. Doors/Windows/Glazing			132	19-Oct-23	26-Apr-24																	
Glazing			132	19-Oct-23	26-Apr-24																	
AGG-1000	08-40-000	Alum. Doors/Windows/Glazing - Glazing (Contractor Prepare)	30	19-Oct-23	01-Dec-23																	
AGG-1010	CM	Alum. Doors/Windows/Glazing - Glazing (CM Review)	2	04-Dec-23	05-Dec-23																	
AGG-1020	AOR	Alum. Doors/Windows/Glazing - Glazing (AOR Review)	14	06-Dec-23	26-Dec-23																	
AGG-1030	08-40-000	Alum. Doors/Windows/Glazing - Glazing (Procurement)	30	18-Mar-24	26-Apr-24																	
Metal Stud Framing/Drywall			111	19-Oct-23	28-Mar-24																	
Blanket Insulation			110	19-Oct-23	27-Mar-24																	
MFBI-1000	06-10-000	Metal Stud Framing/Drywall - Blanket Insulation (Contractor Prepare)	10	19-Oct-23	01-Nov-23																	
MFBI-1010	CM	Metal Stud Framing/Drywall - Blanket Insulation (CM Review)	2	02-Nov-23	03-Nov-23																	
MFBI-1020	AOR	Metal Stud Framing/Drywall - Blanket Insulation (AOR Review)	14	06-Nov-23	27-Nov-23																	
MFBI-1030	06-10-000	Metal Stud Framing/Drywall - Blanket Insulation (Procurement)	5	21-Mar-24	27-Mar-24																	
Gypsum Board			111	19-Oct-23	28-Mar-24																	
MFGB-1000	09-22-000	Metal Stud Framing/Drywall - Gypsum Board (Contractor Prepare)	20	19-Oct-23	15-Nov-23																	
MFGB-1010	CM	Metal Stud Framing/Drywall - Gypsum Board (CM Review)	2	16-Nov-23	17-Nov-23																	
MFGB-1020	AOR	Metal Stud Framing/Drywall - Gypsum Board (AOR Review)	14	20-Nov-23	11-Dec-23																	
MFGB-1030	09-22-000	Metal Stud Framing/Drywall - Gypsum Board (Procurement)	30	15-Feb-24	28-Mar-24																	
Ceramic Tile			139	19-Oct-23	07-May-24																	
Tiling			139	19-Oct-23	07-May-24																	
CTT-1000	09-30-000	Ceramic Tile - Tiling (Contractor Prepare)	15	19-Oct-23	08-Nov-23																	
CTT-1010	CM	Ceramic Tile - Tiling (CM Review)	2	09-Nov-23	10-Nov-23																	

BC AG Sciences Accessory Buildings - Baseline / Bid				All Activities												11-Sep-23						
Activity ID	Bid Packages General	Activity Name	Original Duration	Start	Finish	2024																
						Jul	Aug	Sep	Oct	Nov	Dec	Jan	Feb	Mar	Apr	May	Jun	Jul	Aug	Sep	Oct	
CTT-1020	AOR	Ceramic Tile - Tiling (AOR Review)	14	13-Nov-23	04-Dec-23																	
CTT-1030	09-30-000	Ceramic Tile - Tiling (Procurement)	20	10-Apr-24	07-May-24																	
FRP			139	19-Oct-23	07-May-24																	
Fiberglass Reinforced Plastic Paneling			139	19-Oct-23	07-May-24																	
ACFRP-1000	09-70-000	FRP - Fiberglass Reinforced Plastic Paneling (Contractor Prepare)	15	19-Oct-23	08-Nov-23																	
ACFRP-1010	CM	FRP - Fiberglass Reinforced Plastic Paneling (CM Review)	2	09-Nov-23	10-Nov-23																	
ACFRP-1020	AOR	FRP - Fiberglass Reinforced Plastic Paneling (AOR Review)	14	13-Nov-23	04-Dec-23																	
ACFRP-1030	09-70-000	FRP - Fiberglass Reinforced Plastic Paneling (Procurement)	20	10-Apr-24	07-May-24																	
Painting			139	19-Oct-23	07-May-24																	
Product Data			139	19-Oct-23	07-May-24																	
PPD-1000	09-90-000	Painting - Product Data (Contractor Prepare)	15	19-Oct-23	08-Nov-23																	
PPD-1010	CM	Painting - Product Data (CM Review)	2	09-Nov-23	10-Nov-23																	
PPD-1020	AOR	Painting - Product Data (AOR Review)	14	13-Nov-23	04-Dec-23																	
PPD-1030	09-90-000	Painting - Product Data (Procurement)	20	10-Apr-24	07-May-24																	
Samples			139	19-Oct-23	07-May-24																	
PS-1000	09-90-000	Painting - Samples (Contractor Prepare)	20	19-Oct-23	15-Nov-23																	
PS-1010	CM	Painting - Samples (CM Review)	2	16-Nov-23	17-Nov-23																	
PS-1020	AOR	Painting - Samples (AOR Review)	14	20-Nov-23	11-Dec-23																	
PS-1030	09-90-000	Painting - Samples (Procurement)	10	24-Apr-24	07-May-24																	
Architectural Specialties			152	19-Oct-23	24-May-24																	
Signage			152	19-Oct-23	24-May-24																	
ASS-1000	10-00-000	Architectural Specialties - Signage (Contractor Prepare)	40	19-Oct-23	15-Dec-23																	
ASS-1010	CM	Architectural Specialties - Signage (CM Review)	2	18-Dec-23	19-Dec-23																	
ASS-1020	AOR	Architectural Specialties - Signage (AOR Review)	14	20-Dec-23	10-Jan-24																	
ASS-1030	10-00-000	Architectural Specialties - Signage (Procurement)	60	04-Mar-24	24-May-24																	
Dimensional Sign Characters			152	19-Oct-23	24-May-24																	
ASDS-1000	10-00-000	Architectural Specialties - Dimensional Sign Characters (Contractor Prepare)	20	19-Oct-23	15-Nov-23																	
ASDS-1010	CM	Architectural Specialties - Dimensional Sign Characters (CM Review)	2	16-Nov-23	17-Nov-23																	
ASDS-1020	AOR	Architectural Specialties - Dimensional Sign Characters (AOR Review)	14	20-Nov-23	11-Dec-23																	
ASDS-1030	10-00-000	Architectural Specialties - Dimensional Sign Characters (Procurement)	40	01-Apr-24	24-May-24																	

BC AG Sciences Accessory Buildings - Baseline / Bid					All Activities												11-Sep-23			
Activity ID	Bid Packages General	Activity Name	Original Duration	Start	Finish	2024														
						Jul	Aug	Sep	Oct	Nov	Dec	Jan	Feb	Mar	Apr	May	Jun	Jul	Aug	Sep
Fire Extinguishers and Cabinets			152	19-Oct-23	24-May-24															
ASFE-1000	10-00-000	Architectural Specialties - Fire Extinguishers and Cabinets (Contractor Prepare)	10	19-Oct-23	01-Nov-23															
ASFE-1010	CM	Architectural Specialties - Fire Extinguishers and Cabinets (CM Review)	2	02-Nov-23	03-Nov-23															
ASFE-1020	AOR	Architectural Specialties - Fire Extinguishers and Cabinets (AOR Review)	14	06-Nov-23	27-Nov-23															
ASFE-1030	10-00-000	Architectural Specialties - Fire Extinguishers and Cabinets (Procurement)	20	29-Apr-24	24-May-24															
Toilet Accessories			139	19-Oct-23	07-May-24															
Toilet Room Accessories			139	19-Oct-23	07-May-24															
TTRA-1000	10-60-000	Toilet Partitions/Accessories - Toilet Room Accessories (Contractor Prepare)	20	19-Oct-23	15-Nov-23															
TTRA-1010	CM	Toilet Partitions/Accessories - Toilet Room Accessories (CM Review)	2	16-Nov-23	17-Nov-23															
TTRA-1020	AOR	Toilet Partitions/Accessories - Toilet Room Accessories (AOR Review)	14	20-Nov-23	11-Dec-23															
TTRA-1030	10-60-000	Toilet Partitions/Accessories - Toilet Room Accessories (Procurement)	15	17-Apr-24	07-May-24															
Greenhouse			106	19-Oct-23	21-Mar-24															
Product Data			106	19-Oct-23	21-Mar-24															
GPD-1000	13-11-000	Greenhouse/Shadehouse - Product Data (Contractor Prepare)	20	19-Oct-23	15-Nov-23															
GPD-1010	CM	Greenhouse/Shadehouse - Product Data (CM Review)	2	16-Nov-23	17-Nov-23															
GPD-1020	AOR	Greenhouse/Shadehouse - Product Data (AOR Review)	14	20-Nov-23	11-Dec-23															
GPD-1030	13-11-000	Greenhouse/Shadehouse - Product Data (Procurement)	40	25-Jan-24	21-Mar-24															
Shop Drawings			106	19-Oct-23	21-Mar-24															
GSD-1000	13-11-000	Greenhouse/Shadehouse - Shop Drawings (Contractor Prepare)	30	19-Oct-23	01-Dec-23															
GSD-1010	CM	Greenhouse/Shadehouse - Shop Drawings (CM Review)	2	04-Dec-23	05-Dec-23															
GSD-1020	AOR	Greenhouse/Shadehouse - Shop Drawings (AOR Review)	14	06-Dec-23	26-Dec-23															
GSD-1030	13-11-000	Greenhouse/Shadehouse - Shop Drawings (Procurement)	40	25-Jan-24	21-Mar-24															
Installer Qualifications			106	19-Oct-23	21-Mar-24															
GIQ-1000	13-11-000	Greenhouse/Shadehouse - Installer Qualifications (Contractor Prepare)	10	19-Oct-23	01-Nov-23															
GIQ-1010	CM	Greenhouse/Shadehouse - Installer Qualifications (CM Review)	2	02-Nov-23	03-Nov-23															
GIQ-1020	AOR	Greenhouse/Shadehouse - Installer Qualifications (AOR Review)	14	06-Nov-23	27-Nov-23															
GIQ-1030	13-11-000	Greenhouse/Shadehouse - Installer Qualifications (Procurement)	5	15-Mar-24	21-Mar-24															
Shadehouse			106	19-Oct-23	21-Mar-24															
Product Data			106	19-Oct-23	21-Mar-24															
GPD-1040	13-16-000	Greenhouse/Shadehouse - Product Data (Contractor Prepare)	20	19-Oct-23	15-Nov-23															

BC AG Sciences Accessory Buildings - Baseline / Bid				All Activities												11-Sep-23					
Activity ID	Bid Packages General	Activity Name	Original Duration	Start	Finish	2024															
						Jul	Aug	Sep	Oct	Nov	Dec	Jan	Feb	Mar	Apr	May	Jun	Jul	Aug	Sep	Oct
GPD-1050	CM	Greenhouse/Shadehouse - Product Data (CM Review)	2	16-Nov-23	17-Nov-23																
GPD-1060	AOR	Greenhouse/Shadehouse - Product Data (AOR Review)	14	20-Nov-23	11-Dec-23																
GPD-1070	13-16-000	Greenhouse/Shadehouse - Product Data (Procurement)	20	23-Feb-24	21-Mar-24																
Shop Drawings			106	19-Oct-23	21-Mar-24																
GSD-1040	13-16-000	Greenhouse/Shadehouse - Shop Drawings (Contractor Prepare)	20	19-Oct-23	15-Nov-23																
GSD-1050	CM	Greenhouse/Shadehouse - Shop Drawings (CM Review)	2	16-Nov-23	17-Nov-23																
GSD-1060	AOR	Greenhouse/Shadehouse - Shop Drawings (AOR Review)	14	20-Nov-23	11-Dec-23																
GSD-1070	13-16-000	Greenhouse/Shadehouse - Shop Drawings (Procurement)	20	23-Feb-24	21-Mar-24																
Installer Qualifications			106	19-Oct-23	21-Mar-24																
GIQ-1040	13-16-000	Greenhouse/Shadehouse - Installer Qualifications (Contractor Prepare)	10	19-Oct-23	01-Nov-23																
GIQ-1050	CM	Greenhouse/Shadehouse - Installer Qualifications (CM Review)	2	02-Nov-23	03-Nov-23																
GIQ-1060	AOR	Greenhouse/Shadehouse - Installer Qualifications (AOR Review)	14	06-Nov-23	27-Nov-23																
GIQ-1070	13-16-000	Greenhouse/Shadehouse - Installer Qualifications (Procurement)	5	15-Mar-24	21-Mar-24																
Fire Sprinkler System			228	19-Oct-23	12-Sep-24																
Escutcheons for Fire Suppression Piping			228	19-Oct-23	12-Sep-24																
FSE-1000	15-30-000	Fire Sprinkler System - Escutcheons for Fire Suppression Piping (Contractor Prepare)	10	19-Oct-23	01-Nov-23																
FSE-1010	CM	Fire Sprinkler System - Escutcheons for Fire Suppression Piping (CM Review)	2	02-Nov-23	03-Nov-23																
FSE-1020	AOR	Fire Sprinkler System - Escutcheons for Fire Suppression Piping (AOR Review)	14	06-Nov-23	27-Nov-23																
FSE-1030	15-30-000	Fire Sprinkler System - Escutcheons for Fire Suppression Piping (Procurement)	20	15-Aug-24	12-Sep-24																
Plumbing			205	19-Oct-23	09-Aug-24																
Product Data			106	19-Oct-23	21-Mar-24																
PPD-1040	15-40-000	Plumbing - Product Data (Contractor Prepare)	10	19-Oct-23	01-Nov-23																
PPD-1050	CM	Plumbing - Product Data (CM Review)	2	02-Nov-23	03-Nov-23																
PPD-1060	AOR	Plumbing - Product Data (AOR Review)	14	06-Nov-23	27-Nov-23																
PPD-1070	15-40-000	Plumbing - Product Data (Procurement)	10	08-Mar-24	21-Mar-24																
Plumbing Systems Commissioning			205	19-Oct-23	09-Aug-24																
PSC-1000	15-40-000	Plumbing - Plumbing Systems Commissioning (Contractor Prepare)	10	19-Oct-23	01-Nov-23																
PSC-1010	CM	Plumbing - Plumbing Systems Commissioning (CM Review)	2	02-Nov-23	03-Nov-23																
PSC-1020	AOR	Plumbing - Plumbing Systems Commissioning (AOR Review)	14	06-Nov-23	27-Nov-23																
PSC-1030	15-40-000	Plumbing - Plumbing Systems Commissioning (Procurement)	5	05-Aug-24	09-Aug-24																

Prepared by Greg Morgan
Construction Scheduling Experts

█ Remaining Level of Effort
█ Actual Work
█ Critical Remaining Work
█ Actual Level of Effort
█ Remaining Work
◆ Milestone



Activity ID	Bid Packages General	Activity Name	Original Duration	Start	Finish	2024																
						Jul	Aug	Sep	Oct	Nov	Dec	Jan	Feb	Mar	Apr	May	Jun	Jul	Aug	Sep	Oct	
HVAC/Sheet Metal																						
HVAC Product Data																						
HPD-1000	15-70-000	HVAC/SheetMetal - HVAC Product Data (Contractor Prepare)	40	19-Oct-23	15-Dec-23																	
HPD-1010	CM	HVAC/SheetMetal - HVAC Product Data (CM Review)	2	18-Dec-23	19-Dec-23																	
HPD-1020	AOR	HVAC/SheetMetal - HVAC Product Data (AOR Review)	14	20-Dec-23	10-Jan-24																	
HPD-1030	15-70-000	HVAC/SheetMetal - HVAC Product Data (Procurement)	45	06-Mar-24	07-May-24																	
Controls																						
HC-1000	15-70-000	HVAC/SheetMetal - Controls (Contractor Prepare)	60	19-Oct-23	16-Jan-24																	
HC-1010	CM	HVAC/SheetMetal - Controls (CM Review)	2	17-Jan-24	18-Jan-24																	
HC-1020	AOR	HVAC/SheetMetal - Controls (AOR Review)	14	19-Jan-24	07-Feb-24																	
HC-1030	15-70-000	HVAC/SheetMetal - Controls (Procurement)	40	13-Mar-24	07-May-24																	
Electrical																						
General Conditions for Electrical																						
EGC-1000	16-00-000	Electrical - General Conditions for Electrical (Contractor Prepare)	30	19-Oct-23	01-Dec-23																	
EGC-1010	CM	Electrical - General Conditions for Electrical (CM Review)	2	04-Dec-23	05-Dec-23																	
EGC-1020	AOR	Electrical - General Conditions for Electrical (AOR Review)	14	06-Dec-23	26-Dec-23																	
EGC-1030	16-00-000	Electrical - General Conditions for Electrical (Procurement)	10	13-Feb-24	27-Feb-24																	
Grounding																						
EG-1000	16-00-000	Electrical - Grounding (Contractor Prepare)	30	19-Oct-23	01-Dec-23																	
EG-1010	CM	Electrical - Grounding (CM Review)	2	04-Dec-23	05-Dec-23																	
EG-1020	AOR	Electrical - Grounding (AOR Review)	14	06-Dec-23	26-Dec-23																	
EG-1030	16-00-000	Electrical - Grounding (Procurement)	10	13-Feb-24	27-Feb-24																	
Electrical Systems Commissioning																						
ESC-1040	16-00-000	Electrical - Electrical Systems Commissioning (Contractor Prepare)	10	19-Oct-23	01-Nov-23																	
ESC-1050	CM	Electrical - Electrical Systems Commissioning (CM Review)	2	02-Nov-23	03-Nov-23																	
ESC-1060	AOR	Electrical - Electrical Systems Commissioning (AOR Review)	14	06-Nov-23	27-Nov-23																	
ESC-1070	16-00-000	Electrical - Electrical Systems Commissioning (Procurement)	5	05-Aug-24	09-Aug-24																	
Medium Voltage Distribution																						
EMVD-1000	16-00-000	Electrical - Medium Voltage Distribution (Contractor Prepare)	30	19-Oct-23	01-Dec-23																	
EMVD-1010	CM	Electrical - Medium Voltage Distribution (CM Review)	2	04-Dec-23	05-Dec-23																	

Prepared by Greg Morgan
Construction Scheduling Experts

█ Remaining Level of Effort
 █ Actual Work
 █ Critical Remaining Work
█ Actual Level of Effort
 █ Remaining Work
 ◆ Milestone



BC AG Sciences Accessory Buildings - Baseline / Bid						All Activities												11-Sep-23					
Activity ID	Bid Packages General	Activity Name	Original Duration	Start	Finish	2024																	
						Jul	Aug	Sep	Oct	Nov	Dec	Jan	Feb	Mar	Apr	May	Jun	Jul	Aug	Sep	Oct		
EMVD-1020	AOR	Electrical - Medium Voltage Distribution (AOR Review)	14	06-Dec-23	26-Dec-23																		
EMVD-1030	16-00-000	Electrical - Medium Voltage Distribution (Procurement)	30	03-May-24	14-Jun-24																		
Dry-Type Transformers			166	19-Oct-23	14-Jun-24																		
EDTT-1000	16-00-000	Electrical - Dry-Type Transformers (Contractor Prepare)	30	19-Oct-23	01-Dec-23																		
EDTT-1010	CM	Electrical - Dry-Type Transformers (CM Review)	2	04-Dec-23	05-Dec-23																		
EDTT-1020	AOR	Electrical - Dry-Type Transformers (AOR Review)	14	06-Dec-23	26-Dec-23																		
EDTT-1030	16-00-000	Electrical - Dry-Type Transformers (Procurement)	120	27-Dec-23	14-Jun-24																		
Panelboards			166	19-Oct-23	14-Jun-24																		
EP-1000	16-00-000	Electrical - Panelboards (Contractor Prepare)	30	19-Oct-23	01-Dec-23																		
EP-1010	CM	Electrical - Panelboards (CM Review)	2	04-Dec-23	05-Dec-23																		
EP-1020	AOR	Electrical - Panelboards (AOR Review)	14	06-Dec-23	26-Dec-23																		
EP-1030	16-00-000	Electrical - Panelboards (Procurement)	120	27-Dec-23	14-Jun-24																		
Lighting			116	19-Oct-23	04-Apr-24																		
EL-1000	16-00-000	Electrical - Lighting (Contractor Prepare)	40	19-Oct-23	15-Dec-23																		
EL-1010	CM	Electrical - Lighting (CM Review)	2	18-Dec-23	19-Dec-23																		
EL-1020	AOR	Electrical - Lighting (AOR Review)	14	20-Dec-23	10-Jan-24																		
EL-1030	16-00-000	Electrical - Lighting (Procurement)	60	11-Jan-24	04-Apr-24																		
Lighting Control Systems			176	19-Oct-23	28-Jun-24																		
ELCS-1000	16-00-000	Electrical - Lighting Control Systems (Contractor Prepare)	40	19-Oct-23	15-Dec-23																		
ELCS-1010	CM	Electrical - Lighting Control Systems (CM Review)	2	18-Dec-23	19-Dec-23																		
ELCS-1020	AOR	Electrical - Lighting Control Systems (AOR Review)	14	20-Dec-23	10-Jan-24																		
ELCS-1030	16-00-000	Electrical - Lighting Control Systems (Procurement)	60	05-Apr-24	28-Jun-24																		
Electrical Acceptance Tests			205	19-Oct-23	09-Aug-24																		
EAT-1000	16-00-000	Electrical - Electrical Acceptance Tests (Contractor Prepare)	10	19-Oct-23	01-Nov-23																		
EAT-1010	CM	Electrical - Electrical Acceptance Tests (CM Review)	2	02-Nov-23	03-Nov-23																		
EAT-1020	AOR	Electrical - Electrical Acceptance Tests (AOR Review)	14	06-Nov-23	27-Nov-23																		
EAT-1030	16-00-000	Electrical - Electrical Acceptance Tests (Procurement)	5	05-Aug-24	09-Aug-24																		
Communications			176	19-Oct-23	28-Jun-24																		
EC-1000	16-00-000	Electrical - Communications (Contractor Prepare)	40	19-Oct-23	15-Dec-23																		

Prepared by Greg Morgan
 Construction Scheduling Experts



BC AG Sciences Accessory Buildings - Baseline / Bid				All Activities												11-Sep-23						
Activity ID	Bid Packages General	Activity Name	Original Duration	Start	Finish	2024																
						Jul	Aug	Sep	Oct	Nov	Dec	Jan	Feb	Mar	Apr	May	Jun	Jul	Aug	Sep	Oct	
EC-1010	CM	Electrical - Communications (CM Review)	2	18-Dec-23	19-Dec-23																	
EC-1020	AOR	Electrical - Communications (AOR Review)	14	20-Dec-23	10-Jan-24																	
EC-1030	16-00-000	Electrical - Communications (Procurement)	60	05-Apr-24	28-Jun-24																	
Communications Cable Plant Testing			205	19-Oct-23	09-Aug-24																	
ECCT-1000	16-00-000	Electrical - Communications Cable Plant Testing (Contractor Prepare)	10	19-Oct-23	01-Nov-23																	
ECCT-1010	CM	Electrical - Communications Cable Plant Testing (CM Review)	2	02-Nov-23	03-Nov-23																	
ECCT-1020	AOR	Electrical - Communications Cable Plant Testing (AOR Review)	14	06-Nov-23	27-Nov-23																	
ECCT-1030	16-00-000	Electrical - Communications Cable Plant Testing (Procurement)	5	05-Aug-24	09-Aug-24																	
Electronic Safety and Security			176	19-Oct-23	28-Jun-24																	
EESS-1000	16-00-000	Electrical - Electronic Safety and Security (Contractor Prepare)	30	19-Oct-23	01-Dec-23																	
EESS-1010	CM	Electrical - Electronic Safety and Security (CM Review)	2	04-Dec-23	05-Dec-23																	
EESS-1020	AOR	Electrical - Electronic Safety and Security (AOR Review)	14	06-Dec-23	26-Dec-23																	
EESS-1030	16-00-000	Electrical - Electronic Safety and Security (Procurement)	40	03-May-24	28-Jun-24																	
Fire Alarm System			228	19-Oct-23	12-Sep-24																	
EESS-1040	16-00-000	Electrical - Fire Alarm System (Contractor Prepare)	40	19-Oct-23	15-Dec-23																	
EESS-1050	CM	Electrical - Fire Alarm System (CM Review)	2	18-Dec-23	19-Dec-23																	
EESS-1060	AOR	Electrical - Fire Alarm System (AOR Review)	14	20-Dec-23	10-Jan-24																	
EESS-1070	16-00-000	Electrical - Fire Alarm System (Procurement)	40	18-Jul-24	12-Sep-24																	
Construction Activities			196	06-Nov-23	14-Aug-24																	
AG. Building Site Demolition			47	06-Nov-23	15-Jan-24																	
AGSD-1000	General	StartAccessory Building (AG Building Site Demo)	0	06-Nov-23																		
AGSD-1010	02-11-000	Layout for Site Demolition (AG Building Site Demolition)	2	06-Nov-23	07-Nov-23																	
AGSD-1011	02-11-000	Safe Off Electrical (AG Building Site Demolition)	2	06-Nov-23	07-Nov-23																	
AGSD-1012	02-11-000	Safe Off Water & Gas (AG Building Site Demolition)	2	06-Nov-23	07-Nov-23																	
AGSD-1040	02-11-000	Sawcut/Demo Sidewalk, Curb, & Gutter (AG Building Site Demolition)	3	08-Nov-23	10-Nov-23																	
AGSD-1050	02-11-000	Cap & Demo Irrigation (AG Building Site Demolition)	2	08-Nov-23	09-Nov-23																	
AGSD-1060	02-11-000	Clear & Grub (AG Building Site Demolition)	4	10-Nov-23	15-Nov-23																	
AGSD-1100	02-11-000	Sawcut/Demo Asphalt (AG Building Site Demolition)	3	11-Jan-24	15-Jan-24																	
AGSD-1110	General	AG Bldg Site Demolition Complete (AG Building Site Demolition)	0		15-Jan-24																	

Activity ID	Bid Packages General	Activity Name	Original Duration	Start	Finish	2024														
						Jul	Aug	Sep	Oct	Nov	Dec	Jan	Feb	Mar	Apr	May	Jun	Jul	Aug	Sep
Restroom Building			74	21-Feb-24	04-Jun-24															
RB-1000	General	Start Restroom Building (Restroom Building)	0	21-Feb-24																◆ Start Restroom Building (Restroom Building)
RB-1010	02-11-000	Overexcavate Building Pad (Restroom Building)	4	21-Feb-24	26-Feb-24															■ Overexcavate Building Pad (Restroom Building)
RB-1020	03-01-000	Survey (Restroom Building)	2	27-Feb-24	28-Feb-24															■ Survey (Restroom Building)
RB-1030		Layout/Excavate Foundations (Restroom Building)	1	29-Feb-24	29-Feb-24															■ Layout/Excavate Foundations (Restroom Building)
RB-1040	15-40-000	Plumbing Underground (Restroom Building)	3	01-Mar-24	05-Mar-24															■ Plumbing Underground (Restroom Building)
RB-1050	16-00-000	Electrical Underground (Restroom Building)	4	01-Mar-24	06-Mar-24															■ Electrical Underground (Restroom Building)
RB-1060	03-01-000	Foundation Reinforcing Steel (Restroom Building)	2	07-Mar-24	08-Mar-24															■ Foundation Reinforcing Steel (Restroom Building)
RB-1070	03-01-000	Form Foundations/Curbs (Restroom Building)	3	11-Mar-24	13-Mar-24															■ Form Foundations/Curbs (Restroom Building)
RB-1080	03-01-000	Layout/Install Anchor Bolts/Holddown Bolts (Restroom Building)	1	13-Mar-24	13-Mar-24															■ Layout/Install Anchor Bolts/Holddown Bolts (Restroom Building)
RB-1090	03-01-000	Slab Prep/Vapor Barrier (Restroom Building)	1	14-Mar-24	14-Mar-24															■ Slab Prep/Vapor Barrier (Restroom Building)
RB-1100	03-01-000	Slab Reinforcing Steel (Restroom Building)	1	15-Mar-24	15-Mar-24															■ Slab Reinforcing Steel (Restroom Building)
RB-1110	03-01-000	Pour/Finish Footing and Slab (Restroom Building)	1	18-Mar-24	18-Mar-24															■ Pour/Finish Footing and Slab (Restroom Building)
RB-1120	06-10-000	Frame Walls & Sheathing (Restroom Building)	3	19-Mar-24	21-Mar-24															■ Frame Walls & Sheathing (Restroom Building)
RB-1130	08-10-000	Set Hollow Metal Frames & Louvers (Restroom Building)	1	22-Mar-24	22-Mar-24															■ Set Hollow Metal Frames & Louvers (Restroom Building)
RB-1140	06-10-000	Frame Roof (Restroom Building)	2	22-Mar-24	25-Mar-24															■ Frame Roof (Restroom Building)
RB-1170	15-40-000	Top Out Plumbing (Restroom Building)	4	22-Mar-24	27-Mar-24															■ Top Out Plumbing (Restroom Building)
RB-1180	16-00-000	Rough Electrical Walls and Ceiling (Restroom Building)	3	22-Mar-24	26-Mar-24															■ Rough Electrical Walls and Ceiling (Restroom Building)
RB-1150	15-70-000	Install Roof Gutter (Restroom Building)	1	26-Mar-24	26-Mar-24															■ Install Roof Gutter (Restroom Building)
RB-1160	07-50-000	Shingle Roofing & Metal Trim (Restroom Building)	1	27-Mar-24	27-Mar-24															■ Shingle Roofing & Metal Trim (Restroom Building)
RB-1190	06-10-000	Batt Insulation (Restroom Building)	1	28-Mar-24	28-Mar-24															■ Batt Insulation (Restroom Building)
RB-1240	07-40-000	Install Metal Wall Panels (Restroom Building)	3	28-Mar-24	01-Apr-24															■ Install Metal Wall Panels (Restroom Building)
RB-1200	09-22-000	Drywall (Restroom Building)	2	29-Mar-24	01-Apr-24															■ Drywall (Restroom Building)
RB-1210	09-22-000	Tape/Texture (Restroom Building)	3	02-Apr-24	04-Apr-24															■ Tape/Texture (Restroom Building)
RB-1220	09-90-000	Paint Ceiling (Restroom Building)	1	05-Apr-24	05-Apr-24															■ Paint Ceiling (Restroom Building)
RB-1230	09-70-000	FRP (Restroom Building)	3	08-Apr-24	10-Apr-24															■ FRP (Restroom Building)
RB-1231	15-40-000	Finish Plumbing/Fixtures (Restroom Building)	2	11-Apr-24	12-Apr-24															■ Finish Plumbing/Fixtures (Restroom Building)
RB-1260	10-81-000	Install Toilet Accessories (Restroom Building)	1	11-Apr-24	11-Apr-24															■ Install Toilet Accessories (Restroom Building)

Prepared by Greg Morgan
Construction Scheduling Experts

■ Remaining Level of Effort
 ■ Actual Work
 ■ Critical Remaining Work
■ Actual Level of Effort
 ■ Remaining Work
 ◆ Milestone



Activity ID	Bid Packages General	Activity Name	Original Duration	Start	Finish	2024																
						Jul	Aug	Sep	Oct	Nov	Dec	Jan	Feb	Mar	Apr	May	Jun	Jul	Aug	Sep	Oct	
RB-1241	16-00-000	Finish Electrical (Restroom Building)	3	11-Apr-24	15-Apr-24																	
RB-1270	General	Complete Restroom Building (Restroom Building)	5	16-Apr-24	22-Apr-24																	
Restroom Building Testing / Punch List			30	23-Apr-24	04-Jun-24																	
RBPL-1000	CM	Pre-Punch List Restroom Building (Restroom Building Testing & Punch List)	2	23-Apr-24	24-Apr-24																	
RBPL-1040	General	General Cleaning (Restroom Building Testing & Punch List)	2	23-Apr-24	24-Apr-24																	
RBPL-1010	CM	Pre-Punch List Work Restroom Building (Restroom Building Testing & Punch List)	4	25-Apr-24	30-Apr-24																	
RBPL-1050	General	Janitorial Cleaning (Restroom Building Testing & Punch List)	3	25-Apr-24	29-Apr-24																	
RBPL-1020	CM/AOR/District	Punch List Restroom Building (Restroom Building Testing & Punch List)	5	01-May-24	07-May-24																	
RBPL-1060	01-74-000	Janitorial Cleaning (Restroom Building Testing & Punch List)	10	08-May-24	21-May-24																	
RBPL-1110	03-01-000	Structural Concrete (Restroom Building Testing & Punch List)	10	08-May-24	21-May-24																	
RBPL-1140	08-10-000	Doors, Frames, Hardware (Restroom Building Testing & Punch List)	10	08-May-24	21-May-24																	
RBPL-1170	07-50-000	PVC Roofing (Restroom Building Testing & Punch List)	10	08-May-24	21-May-24																	
RBPL-1200	09-22-000	Metal Stud Framing-Drywall/Exterior Plaster (Restroom Building Testing & Punch List)	10	08-May-24	21-May-24																	
RBPL-1220	09-50-000	Acoustical Ceilings-FRP/FRL (Restroom Building Testing & Punch List)	10	08-May-24	21-May-24																	
RBPL-1240	09-90-000	Painting (Restroom Building Testing & Punch List)	10	08-May-24	21-May-24																	
RBPL-1250	10-00-000	Architectural Specialties (Restroom Building Testing & Punch List)	10	08-May-24	21-May-24																	
RBPL-1260	10-81-000	Toilet Partitions-Accessories (Restroom Building Testing & Punch List)	10	08-May-24	21-May-24																	
RBPL-1300	15-40-000	Plumbing (Restroom Building Testing & Punch List)	10	08-May-24	21-May-24																	
RBPL-1310	15-70-000	HVAC-Sheet Metal (Restroom Building Testing & Punch List)	10	08-May-24	21-May-24																	
RBPL-1320	16-00-000	Electrical (Restroom Building Testing & Punch List)	10	08-May-24	21-May-24																	
RBPL-1160	07-40-000	Metal Wall Panels (Restroom Building Testing & Punch List)	10	17-May-24	31-May-24																	
RBPL-1030	General	Final Punch List Review Restroom Building (Restroom Building Testing & Punch List)	2	03-Jun-24	04-Jun-24																	
Storage Bay			132	05-Feb-24	09-Aug-24																	
SB-1000	General	Start Storage Bay (Storage Bay)	0	05-Feb-24																		
SB-1010	02-11-000	Remove Metal Roof/Structure/Columns (Storage Bay)	2	05-Feb-24	06-Feb-24																	
SB-1020	02-11-000	Demo Existing Foundations as Required (Storage Bay)	1	07-Feb-24	07-Feb-24																	
SB-1021	09-90-000	Patch & Paint Existing CMU Walls (Storage Bay)	3	08-Feb-24	12-Feb-24																	
SB-1030	03-01-000	Auger Column Foundations (Storage Bay)	1	13-Feb-24	13-Feb-24																	

BC AG Sciences Accessory Buildings - Baseline / Bid				All Activities												11-Sep-23			
Activity ID	Bid Packages General	Activity Name	Original Duration	Start	Finish	2024													
						Jul	Aug	Sep	Oct	Nov	Dec	Jan	Feb	Mar	Apr	May	Jun	Jul	Aug
SB-1040	16-00-000	Stub Up Electrical/Communications (Storage Bay)	2	13-Feb-24	14-Feb-24									█	Stub Up Electrical/Communications (Storage Bay)				
SB-1060	03-01-000	Caisson Foundation Reinforcing Steel (Storage Bay)	1	14-Feb-24	14-Feb-24										Caisson Foundation Reinforcing Steel (Storage Bay)				
SB-1070	03-01-000	Install Sonotube (Storage Bay)	2	15-Feb-24	16-Feb-24									█	Install Sonotube (Storage Bay)				
SB-1080	03-01-000	Set Columns (Storage Bay)	1	20-Feb-24	20-Feb-24										Set Columns (Storage Bay)				
SB-1090	03-01-000	Pour/Finish Caissons (Storage Bay)	1	21-Feb-24	21-Feb-24										Pour/Finish Caissons (Storage Bay)				
SB-1100	07-40-000	Install Vertical Siding on CMU (Storage Bay)	2	22-Feb-24	23-Feb-24									█	Install Vertical Siding on CMU (Storage Bay)				
SB-1110	16-00-000	Install Electrical and Communications Panels (Storage Bay)	2	26-Feb-24	27-Feb-24									█	Install Electrical and Communications Panels (Storage Bay)				
SB-1120	05-10-000	Install Roof Structural Steel and Purlins (Storage Bay)	2	26-Feb-24	27-Feb-24									█	Install Roof Structural Steel and Purlins (Storage Bay)				
SB-1180	16-00-000	Pull Electrical Wiring (Storage Bay)	1	28-Feb-24	28-Feb-24										Pull Electrical Wiring (Storage Bay)				
SB-1130	05-10-000	Install Roof and Gutters (Storage Bay)	3	19-Apr-24	23-Apr-24									█	Install Roof and Gutters (Storage Bay)				
SB-1140	15-70-000	Install Rainwater Leaders and Downspouts (Storage Bay)	1	24-Apr-24	24-Apr-24										Install Rainwater Leaders and Downspouts (Storage Bay)				
SB-1150	07-40-000	Install Metal Wall Panels (Storage Bay)	2	25-Apr-24	26-Apr-24									█	Install Metal Wall Panels (Storage Bay)				
SB-1160	09-90-000	Paint Exposed Steel (Storage Bay)	2	29-Apr-24	30-Apr-24									█	Paint Exposed Steel (Storage Bay)				
SB-1170	08-30-000	Install Roll Up Doors (Storage Bay)	3	01-May-24	03-May-24									█	Install Roll Up Doors (Storage Bay)				
SB-1190	16-00-000	Install Lighting (Storage Bay)	1	01-Jul-24	01-Jul-24											Install Lighting (Storage Bay)			
SB-1210	General	Complete Storage Bay (Storage Bay)	5	02-Jul-24	09-Jul-24									█	Complete Storage Bay (Storage Bay)				
Storage Bay Testing / Punch List			68	06-May-24	09-Aug-24														
SBPL-1040	01-74-000	Janitorial Cleaning (Storage Bay PL)	1	06-May-24	06-May-24										Janitorial Cleaning (Storage Bay PL)				
SBPL-1030	Prime Cont.	General Cleaning (Storage Bay PL)	1	10-Jul-24	10-Jul-24											General Cleaning (Storage Bay PL)			
SBPL-1000	CM	Pre-Punch List Storage Building (Storage Bay PL)	1	11-Jul-24	11-Jul-24										Pre-Punch List Storage Building (Storage Bay PL)				
SBPL-1001	Prime Cont.	Pre-Punch List Work (Storage Bay PL)	2	12-Jul-24	15-Jul-24									█	Pre-Punch List Work (Storage Bay PL)				
SBPL-1010	CM	Punch List Exterior Lower Building (Storage Bay PL)	5	16-Jul-24	22-Jul-24									█	Punch List Exterior Lower Building (Storage Bay PL)				
SBPL-1120	05-10-000	Structural Steel-Misc. Iron (Storage Bay PL)	2	23-Jul-24	24-Jul-24									█	Structural Steel-Misc. Iron (Storage Bay PL)				
SBPL-1150	07-40-000	Metal Wall Panels (Storage Bay PL)	2	23-Jul-24	24-Jul-24									█	Metal Wall Panels (Storage Bay PL)				
SBPL-1230	09-90-000	Painting (Storage Bay PL)	1	23-Jul-24	23-Jul-24										Painting (Storage Bay PL)				
SBPL-1310	16-00-000	Electrical (Storage Bay PL)	2	23-Jul-24	24-Jul-24									█	Electrical (Storage Bay PL)				
SBPL-1320	08-30-000	Overhead Coiling Doors-Smoke Curtains (Storage Bay PL)	2	23-Jul-24	24-Jul-24									█	Overhead Coiling Doors-Smoke Curtains (Storage Bay PL)				
SBPL-1020	General	Final Punch List Review Exterior Lower Building (Storage Bay PL)	2	25-Jul-24	26-Jul-24									█	Final Punch List Review Exterior Lower Building (Storage Bay PL)				

Prepared by Greg Morgan
Construction Scheduling Experts

▬ Remaining Level of Effort █ Actual Work ▬ Critical Remaining Work
▬ Actual Level of Effort █ Remaining Work ◆ Milestone

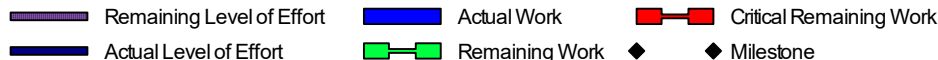


Activity ID	Bid Packages General	Activity Name	Original Duration	Start	Finish	All Activities														
						2024														
						Jul	Aug	Sep	Oct	Nov	Dec	Jan	Feb	Mar	Apr	May	Jun	Jul	Aug	Sep
SBPL-1050	General	Weather Related Delays (Storage Bay PL)	10	29-Jul-24	09-Aug-24															
SBPL-1060	General	Project Complete (Storage Bay PL)	0		09-Aug-24															
Greenhouse Building / Shade House Building			149	16-Jan-24	14-Aug-24															
Greenhouse Area Site Demolition			30	16-Jan-24	27-Feb-24															
GASD-1000	General	Start Site Demolition Greenhouse Area (Greenhouse Demo)	0	16-Jan-24																
GASD-1001	Prime Cont	Pre-Demo Conference (Greenhouse Demo)	1	16-Jan-24	16-Jan-24															
GASD-1010	16-00-000	Safe Off Electrical (Greenhouse Demo)	3	17-Jan-24	19-Jan-24															
GASD-1011	02-14-000	Safe Off Water & Gas (Greenhouse Demo)	2	17-Jan-24	18-Jan-24															
GASD-1012	02-11-000	Install Tree Protection Measures (Greenhouse Demo)	1	19-Jan-24	19-Jan-24															
GASD-1002	02-11-000	Underground Investigation (Greenhouse Demo)	2	22-Jan-24	23-Jan-24															
GASD-1021	02-11-000	Pothole Existing Utilities (Greenhouse Demo)	2	22-Jan-24	23-Jan-24															
GASD-1031	02-14-000	Cut & Cap Water and Gas (Greenhouse Demo)	1	24-Jan-24	24-Jan-24															
GASD-1041	16-00-000	Remove Electrical Feeder (Greenhouse Demo)	2	24-Jan-24	25-Jan-24															
GASD-1051	02-11-000	Remove Irrigation (Greenhouse Demo)	1	24-Jan-24	24-Jan-24															
GASD-1032	02-11-000	Remove Water and Gas Lines (Greenhouse Demo)	2	25-Jan-24	26-Jan-24															
GASD-1061	02-11-000	Demo Existing Greenhouse/Horticulture/Shadehouse Buildings (Greenhouse Demo)	6	26-Jan-24	02-Feb-24															
GASD-1071	02-11-000	Selective Demo Storage Bay (Greenhouse Demo)	3	05-Feb-24	07-Feb-24															
GASD-1081	02-11-000	Clear & Grub Site (Greenhouse Demo)	3	05-Feb-24	07-Feb-24															
GASD-1091	02-11-000	Site Hardscapes Demolition (Greenhouse Demo)	3	08-Feb-24	12-Feb-24															
GASD-1101	02-11-000	Demo Septic System (Greenhouse Demo)	2	09-Feb-24	12-Feb-24															
GASD-1121	02-11-000	Site Grading and Earthwork	5	13-Feb-24	20-Feb-24															
GASD-1111	General	Finish Site Demolition Greenhouse Area (Greenhouse Demo)	5	21-Feb-24	27-Feb-24															
Greenhouse Area Site Work			86	28-Feb-24	27-Jun-24															
GASW-1000	General	Start Greenhouse Area Site Work (Greenhouse Site Work)	0	28-Feb-24																
GASW-1010	03-01-000	Survey Site Work for Accessory Buildings (Greenhouse Site Work)	3	28-Feb-24	01-Mar-24															
GASW-1320	16-00-000	Demo Electrical Feeder (Greenhouse Site Work)	3	28-Feb-24	01-Mar-24															
GASW-1370	16-00-000	Pull Feeders to Panel DP-G (Greenhouse Site Work)	2	28-Feb-24	29-Feb-24															
GASW-1020	02-32-000	Irrigation Sleeves Under Sidewalk (Greenhouse Site Work)	2	04-Mar-24	05-Mar-24															



BC AG Sciences Accessory Buildings - Baseline / Bid			All Activities										2024									
Activity ID	Bid Packages General	Activity Name	Original Duration	Start	Finish																	
						Jul	Aug	Sep	Oct	Nov	Dec	Jan	Feb	Mar	Apr	May	Jun	Jul	Aug	Sep	Oct	
GASW-1350	16-00-000	Set new Electrical Vault North of Greenhouse Area (Greenhouse Site Work)	2	04-Mar-24	05-Mar-24																	
GASW-1361	02-14-000	Layout and Excavate North Side Storm Drain (Greenhouse Site Work)	5	04-Mar-24	08-Mar-24																	
GASW-1330	16-00-000	Excavate Comm/Fire/Power to New Panels/Pullboxes (Greenhouse Site Work)	5	04-Mar-24	08-Mar-24																	
GASW-1030	02-15-000	Layout/Form 5' ADA Sidewalk (Greenhouse Site Work)	4	06-Mar-24	11-Mar-24																	
GASW-1360	16-00-000	Site Electrical to Accessory Buildings Point of Connection (Greenhouse Site Work)	3	06-Mar-24	08-Mar-24																	
GASW-1380	02-14-000	Install N. Storm (Greenhouse Site Work)	3	11-Mar-24	13-Mar-24																	
GASW-1421	16-00-000	Excavate Data/Communication to Accessory Buildings (Greenhouse Site Work)	2	11-Mar-24	12-Mar-24																	
GASW-1040	03-01-000	Reinforcing Steel for Sidewalk (Greenhouse Site Work)	2	12-Mar-24	13-Mar-24																	
GASW-1422	16-00-000	Install Data/Communications to Accessory Buildings (Greenhouse Site Work)	2	13-Mar-24	14-Mar-24																	
GASW-1060	03-01-000	Pour/Finish 5' ADA Sidewalk (Greenhouse Site Work)	2	14-Mar-24	15-Mar-24																	
GASW-1390	02-14-000	Backfill N Storm (Greenhouse Site Work)	1	14-Mar-24	14-Mar-24																	
GASW-1420	02-14-000	Extend Drain/Daylight Pipe into Rockbed (Greenhouse Site Work)	4	15-Mar-24	20-Mar-24																	
GASW-1423	16-00-000	Install Communications Conduit and Pullboxes (Greenhouse Site Work)	2	15-Mar-24	18-Mar-24																	
GASW-1070	03-01-000	Strip/Cleanup 5' ADA Sidewalk (Greenhouse Site Work)	1	18-Mar-24	18-Mar-24																	
GASW-1090	03-01-000	Form Concrete Seat Benches at R&W Dr. (Greenhouse Site Work)	5	19-Mar-24	25-Mar-24																	
GASW-1424	16-00-000	Backfill Data/Communication (Greenhouse Site Work)	1	19-Mar-24	19-Mar-24																	
GASW-1430	03-01-000	Fine Grade Accessory Buildings Area (Greenhouse Site Work)	2	20-Mar-24	21-Mar-24																	
GASW-1471	03-01-000	Install Decomposed Granite at Accessory Buildings Area (Greenhouse Site Work)	3	21-Mar-24	25-Mar-24																	
GASW-1440	03-01-000	Layout/Form Flatwork for Accessory Buildings Area (Greenhouse Site Work)	3	22-Mar-24	26-Mar-24																	
GASW-1100	03-01-000	Reinforcing Steel for Concrete Seat Benches at R&W Dr. (Greenhouse Site Work)	5	26-Mar-24	01-Apr-24																	
GASW-1450	03-01-000	Reinforcing Steel for Site Concrete (Greenhouse Site Work)	3	27-Mar-24	29-Mar-24																	
GASW-1460	03-01-000	Pour/Finish Site Concrete (Greenhouse Site Work)	3	01-Apr-24	03-Apr-24																	
GASW-1110	03-01-000	Pour/Finish Concrete Seat Benches at R&W Dr. (Greenhouse Site Work)	5	02-Apr-24	08-Apr-24																	
GASW-1470	03-01-000	Strip/Cleanup Site Concrete (Greenhouse Site Work)	1	04-Apr-24	04-Apr-24																	
GASW-1120	03-01-000	Strip/Cleanup Concrete Seat Benches at R&W Dr. (Greenhouse Site Work)	5	09-Apr-24	15-Apr-24																	
GASW-1170	03-01-000	Form South Ramp & Flatwork Area (Greenhouse Site Work)	2	16-Apr-24	17-Apr-24																	
GASW-1180	03-01-000	Reinforcing Steel for South Ramp and Flatwork (Greenhouse Site Work)	1	18-Apr-24	18-Apr-24																	
GASW-1190	03-01-000	Pour/Finish South Ramp and Flatwork (Greenhouse Site Work)	1	19-Apr-24	19-Apr-24																	

Prepared by Greg Morgan
Construction Scheduling Experts





Activity ID	Bid Packages General	Activity Name	Original Duration	Start	Finish	2024																
						Jul	Aug	Sep	Oct	Nov	Dec	Jan	Feb	Mar	Apr	May	Jun	Jul	Aug	Sep	Oct	
GASW-1191	03-01-000	Strip/Cleanup South Ramp and Flatwork (Greenhouse Site Work)	1	22-Apr-24	22-Apr-24																	
GASW-1200	03-01-000	Form Radius Seat Walls and Tree Planter (Greenhouse Site Work)	2	23-Apr-24	24-Apr-24																	
GASW-1201	03-01-000	Reinforcing Steel for Radius Seat Walls and Tree Planter (Greenhouse Site Work)	1	25-Apr-24	25-Apr-24																	
GASW-1210	03-01-000	Pour/Finish Radius Seat Walls and Tree Planter (Greenhouse Site Work)	1	26-Apr-24	26-Apr-24																	
GASW-1211	03-01-000	Strip/Finish Radius Seat Walls and Tree Planter (Greenhouse Site Work)	1	29-Apr-24	29-Apr-24																	
GASW-1300	02-32-000	Irrigation for Shrubs & Tree Areas (Greenhouse Site Work)	4	30-Apr-24	03-May-24																	
GASW-1310	02-32-000	Commission Irrigation (Greenhouse Site Work)	1	06-May-24	06-May-24																	
GASW-1510	02-32-000	Place Mulch at Entrance Area to Accessories Buildings	5	06-May-24	10-May-24																	
GASW-1472	02-32-000	Plant Trees & Shrubs (Greenhouse Site Work)	5	07-May-24	13-May-24																	
GASW-1520	General	Complete Greenhouse Area Site Work (Greenhouse Site Work)	5	13-May-24	17-May-24																	
GASW-1475	02-32-000	Sod/Seed Turf (Greenhouse Site Work)	1	14-May-24	14-May-24																	
GASW-1480	General	Complete Greenhouse Area Site Work (Greenhouse Site Work)	5	15-May-24	21-May-24																	
GASW-1340	16-00-000	Install Panels (Greenhouse Site Work)	2	17-Jun-24	18-Jun-24																	
GASW-1490	16-00-000	Excavate for Electrical / Communications / Fire Alarm & Install Conduits & Pull Boxes	4	19-Jun-24	24-Jun-24																	
GASW-1500	16-00-000	Backfill @ Electrical / Communications / Fire Alarm	3	25-Jun-24	27-Jun-24																	
Greenhouse Building Construction			82	22-Mar-24	17-Jul-24																	
GHBC-1000	General	Start Greenhouse Building Construction (Greenhouse Building)	0	22-Mar-24																		
GHBC-1010	13-11-000	Survey/Layout Greenhouse (Greenhouse Building)	1	22-Mar-24	22-Mar-24																	
GHBC-1020	13-11-000	Auger Caissons & Bollards (Greenhouse Building)	2	25-Mar-24	26-Mar-24																	
GHBC-1110	02-14-000	Extend Water from Site to Point of Connection (Greenhouse Building)	1	25-Mar-24	25-Mar-24																	
GHBC-1021	13-11-000	Reinforcing Steel for Caissons (Greenhouse Building)	2	27-Mar-24	28-Mar-24																	
GHBC-1030	13-11-000	Set 6x6/4x4 Flagpole Columns (Greenhouse Building)	2	29-Mar-24	01-Apr-24																	
GHBC-1120	13-11-000	Pour Frame Foundations and Bollards (Greenhouse Building)	1	02-Apr-24	02-Apr-24																	
GHBC-1130	13-11-000	Strip/Cleanup at Caissons (Greenhouse Building)	1	03-Apr-24	03-Apr-24																	
GHBC-1140	13-11-000	Form Perimeter Curb (Greenhouse Building)	2	04-Apr-24	05-Apr-24																	
GHBC-1150	13-11-000	Reinforcing Steel for Perimeter Curb (Greenhouse Building)	1	08-Apr-24	08-Apr-24																	
GHBC-1160	13-11-000	Pour/Finish Perimeter Curb (Greenhouse Building)	1	09-Apr-24	09-Apr-24																	
GHBC-1170	13-11-000	Strip/Clean Perimeter Curb (Greenhouse Building)	1	10-Apr-24	10-Apr-24																	

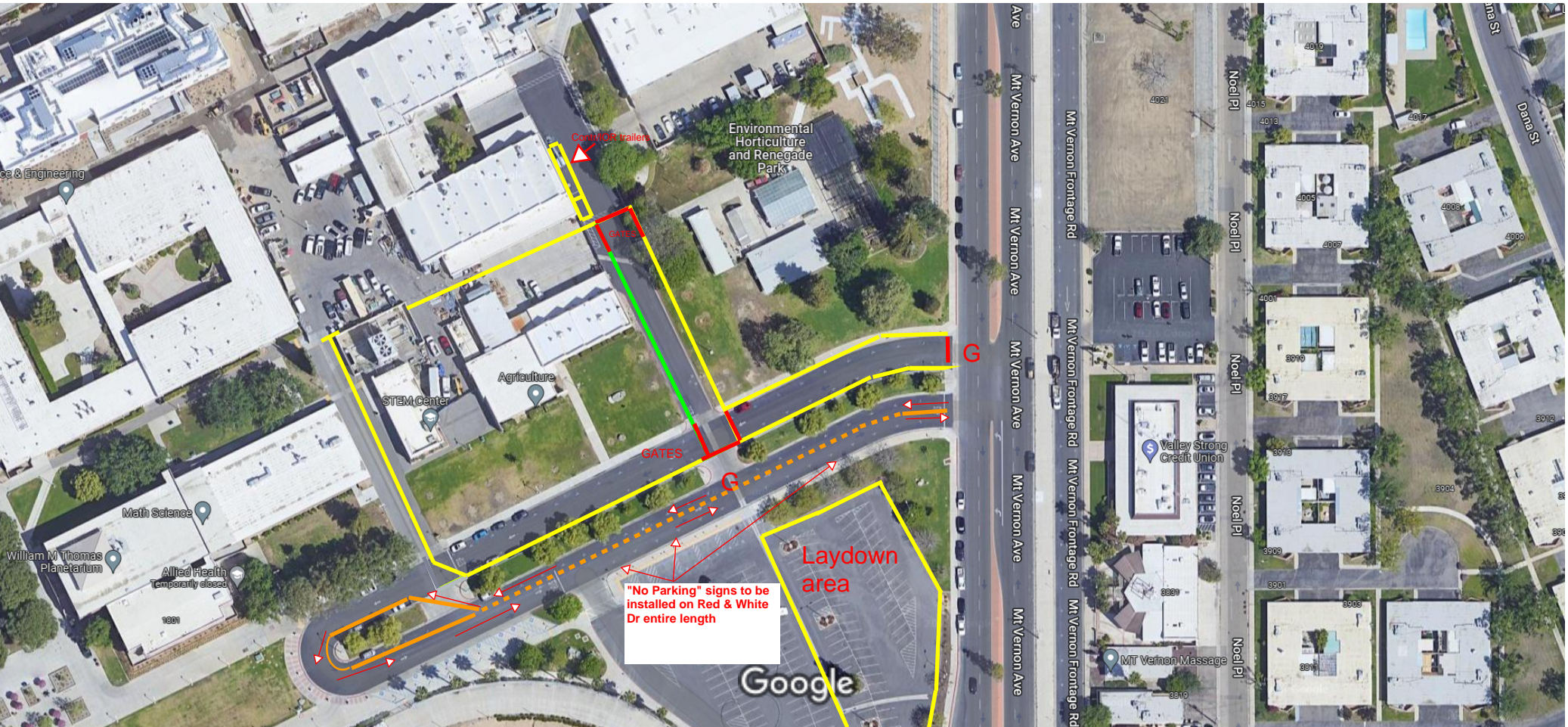


Activity ID	Bid Packages General	Activity Name	Original Duration	Start	Finish	2024																
						Jul	Aug	Sep	Oct	Nov	Dec	Jan	Feb	Mar	Apr	May	Jun	Jul	Aug	Sep	Oct	
GHBC-1180	13-11-000	Install Class 2 Base and Decomposed Granite (Greenhouse Building)	2	11-Apr-24	12-Apr-24											█	Install Class 2 Base and Decomposed Granite (Greenhouse Building)					
GHBC-1190	13-11-000	Erect Greenhouse Frame (Greenhouse Building)	10	15-Apr-24	26-Apr-24											█	Erect Greenhouse Frame (Greenhouse Building)					
GHBC-1191	13-11-000	Install Glazing Panels on Greenhouse (Greenhouse Building)	10	29-Apr-24	10-May-24											█	Install Glazing Panels on Greenhouse (Greenhouse Building)					
GHBC-1200	15-40-000	Install Irrigation Piping/Hose Bibbs (Greenhouse Building)	3	13-May-24	15-May-24											█	Install Irrigation Piping/Hose Bibbs (Greenhouse Building)					
GHBC-1210	16-00-000	Install Electrical/Lighting (Greenhouse Building)	8	13-May-24	22-May-24											█	Install Electrical/Lighting (Greenhouse Building)					
GHBC-1270	16-00-000	Install IDF (Greenhouse Building)	2	13-May-24	14-May-24											█	Install IDF (Greenhouse Building)					
GHBC-1192	13-11-000	Install Greenhouse Equipment (Greenhouse Building)	10	13-May-24	24-May-24											█	Install Greenhouse Equipment (Greenhouse Building)					
GHBC-1260	13-11-000	Install 2 Compartment Sinks (Greenhouse Building)	2	16-May-24	17-May-24											█	Install 2 Compartment Sinks (Greenhouse Building)					
GHBC-1230	10-00-000	Install Room & Building Signage (Greenhouse Building)	2	28-May-24	29-May-24											█	Install Room & Building Signage (Greenhouse Building)					
GHBC-1240	13-11-000	Install Fire Extinguishers (Greenhouse Building)	1	28-May-24	28-May-24											█	Install Fire Extinguishers (Greenhouse Building)					
GHBC-1250	13-11-000	Startup Equipment (Greenhouse Building)	2	28-May-24	29-May-24											█	Startup Equipment (Greenhouse Building)					
GHBC-1193	13-11-000	Install Greenhouse Accessories (Greenhouse Building)	10	28-May-24	10-Jun-24											█	Install Greenhouse Accessories (Greenhouse Building)					
GHBC-1320	General	Complete Greenhouse Building Construction (Greenhouse Building)	0	29-May-24	29-May-24											█	Complete Greenhouse Building Construction (Greenhouse Building)					
GHBC-1300	13-11-000	Install Tables (Greenhouse Building)	3	30-May-24	03-Jun-24											█	Install Tables (Greenhouse Building)					
GHBC-1310	13-11-000	Install Rain Barrels (Greenhouse Building)	1	04-Jun-24	04-Jun-24											█	Install Rain Barrels (Greenhouse Building)					
GHBC-1220	16-00-000	Rough-In Data/Communications (Greenhouse Building)	3	28-Jun-24	02-Jul-24											█	Rough-In Data/Communications (Greenhouse Building)					
GHBC-1280	16-00-000	Pull Data/Communications Cable (Greenhouse Building)	2	03-Jul-24	05-Jul-24											█	Pull Data/Communications Cable (Greenhouse Building)					
GHBC-1290	16-00-000	Install Card Readers & Wireless Access Points (Greenhouse Building)	3	08-Jul-24	10-Jul-24											█	Install Card Readers & Wireless Access Points (Greenhouse Building)					
GHBC-1330	General	Complete Greenhouse Building Construction (Greenhouse Building)	5	11-Jul-24	17-Jul-24											█	Complete Greenhouse Building Construction (Greenhouse Building)					
Shade House Building			47	22-Mar-24	28-May-24																	
SHB-1000	General	Start Shade House Building (Shade House)	0	22-Mar-24																		
SHB-1001	13-11-000	Survey for Shadehouse Building (Shade House)	1	22-Mar-24	22-Mar-24																	
SHB-1010	03-01-000	Excavate CMU Foundation (Shade House)	1	25-Mar-24	25-Mar-24																	
SHB-1040	13-16-000	Auger Columns/Braces/Bollards Foundations (Shade House)	1	26-Mar-24	26-Mar-24																	
SHB-1020	03-01-000	CMU Foundation Reinforcing Steel (Shade House)	2	27-Mar-24	28-Mar-24																	
SHB-1030	16-00-000	Stub-Up Electrical/Communications (Shade House)	1	27-Mar-24	27-Mar-24																	
SHB-1050	13-16-000	Caisson Foundations Reinforcing Steel (Shade House)	2	27-Mar-24	28-Mar-24																	
SHB-1051	13-16-000	Pour/Finish Caisson Foundations/CMU Foundation (Shade House)	1	29-Mar-24	29-Mar-24																	

Activity ID	Bid Packages General	Activity Name	Original Duration	Start	Finish	2024															
						Jul	Aug	Sep	Oct	Nov	Dec	Jan	Feb	Mar	Apr	May	Jun	Jul	Aug	Sep	Oct
SHB-1052	13-16-000	Install Class 2 Base & Decomposed Granite (Shade House)	2	01-Apr-24	02-Apr-24											█ Install Class 2 Base & Decomposed Granite (Shade House)					
SHB-1140	04-20-000	Install/Grout CMU Wall (Shade House)	2	01-Apr-24	02-Apr-24											█ Install/Grout CMU Wall (Shade House)					
SHB-1060	13-16-000	Erect Shadehouse (Shade House)	10	03-Apr-24	16-Apr-24											█ Erect Shadehouse (Shade House)					
SHB-1160	16-00-000	Set Electrical & Irrigation Control Panels (Shade House)	2	03-Apr-24	04-Apr-24											█ Set Electrical & Irrigation Control Panels (Shade House)					
SHB-1110	13-16-000	Install Irrigation (Shade House)	4	17-Apr-24	22-Apr-24											█ Install Irrigation (Shade House)					
SHB-1150	03-01-000	Install Bollards (Shade House)	1	17-Apr-24	17-Apr-24											█ Install Bollards (Shade House)					
SHB-1120	13-16-000	Install Electrical/Lighting (Shade House)	5	23-Apr-24	29-Apr-24											█ Install Electrical/Lighting (Shade House)					
SHB-1130	13-16-000	Install Tables (Shade House)	2	30-Apr-24	01-May-24											█ Install Tables (Shade House)					
SHB-1170	General	Finish Shadehouse Building (Shade House)	5	02-May-24	08-May-24											█ Finish Shadehouse Building (Shade House)					
GSPL-1100	02-32-000	Grade for Decomp Granite @ Green/Shade Exterior	4	09-May-24	14-May-24											█ Grade for Decomp Granite @ Green/Shade Exterior					
GSPL-1110	02-32-000	Install CL2 Base Exterior Green/Shade House	4	15-May-24	20-May-24											█ Install CL2 Base Exterior Green/Shade House					
GSPL-1120	02-32-000	Install DG Exterior of Green/Shade House	5	21-May-24	28-May-24											█ Install DG Exterior of Green/Shade House					
Greenhouse & Shade House Building Testing / Punch List			50	05-Jun-24	14-Aug-24																
GSPL-1000	CM	Pre-Punch List (Greenhouse & Shade House PL)	2	05-Jun-24	06-Jun-24											█ Pre-Punch List (Greenhouse & Shade House PL)					
GSPL-1010	CM	Pre-Punch List Work (Greenhouse & Shade House PL)	5	07-Jun-24	13-Jun-24											█ Pre-Punch List Work (Greenhouse & Shade Hc					
GSPL-1070	16-00-000	Test Card Readers & Wireless Access Points	2	11-Jul-24	12-Jul-24											█ Test Card Readers & Wireless Acces					
GSPL-1080	CM/AOR/District	Punch List Walk	2	15-Jul-24	16-Jul-24											█ Punch List Walk					
GSPL-1030	13-11-000	Greenhouse-Shade House (Greenhouse & Shade House PL)	10	17-Jul-24	30-Jul-24											█ Greenhouse-Shade House					
GSPL-1090	13-16-000	Greenhouse-Shade House (Greenhouse & Shade House PL)	10	17-Jul-24	30-Jul-24											█ Greenhouse-Shade House					
GSPL-1020	General	Final Punch List Review Greenhouse & Shade House (Greenhouse & Shade House PL)	1	31-Jul-24	31-Jul-24											█ Final Punch List Review Gre					
GSPL-1050	General	Weather Related Delays (Greenhouse & Shade House PL)	10	01-Aug-24	14-Aug-24											█ Weather Related Dela					
GSPL-1060	General	Project Complete (Greenhouse & Shade House PL)	0		14-Aug-24											◆ Project Complete (Gre					
Closeout Activities			23	12-Aug-24	12-Sep-24																
CA-1000	General	Start Closeout Activities (Closeout)	0	12-Aug-24												◆ Start Closeout Activities					
CA-1040	02-14-000	Site Utilities (Closeout)	20	12-Aug-24	09-Sep-24											█ Site Utilities					
CA-1050	03-01-000	Site Concrete (Closeout)	20	12-Aug-24	09-Sep-24											█ Site Concre					
CA-1070	02-23-000	Decorative Fence (Closeout)	20	12-Aug-24	09-Sep-24											█ Decorative					
CA-1080	02-32-000	Landscape-Irrigation (Closeout)	20	12-Aug-24	09-Sep-24											█ Landscape					



Activity ID	Bid Packages General	Activity Name	Original Duration	Start	Finish	2023												2024											
						Jul	Aug	Sep	Oct	Nov	Dec	Jan	Feb	Mar	Apr	May	Jun	Jul	Aug	Sep	Oct								
CA-1090	03-01-000	Structural Concrete (Closeout)	20	12-Aug-24	09-Sep-24																Structural C								
CA-1100	04-20-000	Masonry (Closeout)	20	12-Aug-24	09-Sep-24																Masonry (C								
CA-1110	05-10-000	Structural Steel-Misc. Iron (Closeout)	20	12-Aug-24	09-Sep-24																Structural S								
CA-1120	08-10-000	-Doors, Frames, Hardware (Closeout)	20	12-Aug-24	09-Sep-24																-Doors, Fra								
CA-1140	07-40-000	Metal Wall Panels (Closeout)	20	12-Aug-24	09-Sep-24																Metal Wall								
CA-1150	07-50-000	Roofing Shingle (Closeout)	20	12-Aug-24	09-Sep-24																Roofing Sh								
CA-1160	08-30-000	Overhead Coiling Doors-Smoke Curtains (Closeout)	20	12-Aug-24	09-Sep-24																Overhead C								
CA-1170	08-40-000	Aluminum Doors, Windows, Glass Glazing (Closeout)	20	12-Aug-24	09-Sep-24																Aluminum								
CA-1180	09-22-000	Drywall (Closeout)	20	12-Aug-24	09-Sep-24																Drywall (C								
CA-1200	09-50-000	-FRP (Closeout)	20	12-Aug-24	09-Sep-24																-FRP (Clos								
CA-1220	09-90-000	Painting (Closeout)	20	12-Aug-24	09-Sep-24																Painting (C								
CA-1230	10-00-000	Architectural Specialties (Closeout)	20	12-Aug-24	09-Sep-24																Architectur								
CA-1240	10-81-000	ToiletAccessories (Closeout)	20	12-Aug-24	09-Sep-24																ToiletAcces								
CA-1250	13-11-000	Greenhouse-Shadehouse (Closeout)	20	12-Aug-24	09-Sep-24																Greenhouse								
CA-1280	15-40-000	Plumbing (Closeout)	20	12-Aug-24	09-Sep-24																Plumbing (
CA-1290	15-70-000	HVAC-SheetMetal (Closeout)	20	12-Aug-24	09-Sep-24																HVAC-Sheet								
CA-1300	16-00-000	Electrical (Closeout)	20	12-Aug-24	09-Sep-24																Electrical (C								
CA-1310	13-16-000	Shadehouse (Closeout)	20	12-Aug-24	09-Sep-24																Shadehou								
CA-1320	13-11-000	Shadehouse (Closeout)	20	15-Aug-24	12-Sep-24																Shadeho								
CA-1010	General	CloseoutComplete (Closeout)	0		12-Sep-24																◆ Closeout								



PROJECT: KERN COMMUNITY COLLEGE DISTRICT
 BC AG ACCESSORY BUILDINGS
 CCC # 23-009.01



REFERENCE: JOB WALK – SIGN IN SHEET, 8/21/23 @ 10:00 A.M.

PLACE: AG ACCESSORY BUILDINGS
 RED & WHITE DRIVE
 BAKERSFIELD, CA

ATTENDEE SIGN-IN SHEET

Bid Package /Scope	CONTACT	COMPANY	OFFICE PHONE	E-MAIL
CM	JOHN AUDAP	COLOMBO	661-316-0100	jaudap@colomboconstruction.com
	VICTOR PEREZ	G&G MECHAN.	661-277-6400	VICTORJ@gandgmech.com
	Jennifer Gault	JTS Construction	661-835-9270	estimating@jtsconstruction.com
ELECTRICAL	Tom HENDERSON	A-C ELECTRIC	661-410-0000	tomhenderson@ac-electric.com
Demo/Earthwork	Erik Bowen	Bowen Engineering	559 233 7404	OFFICE@bowendemo.com
CONCRETE	JUSTIN LEACH	CON-CAL CONSTRUCTION	661-399-3759	JLEACH@CONCALCONSTRUCTION.COM
concrete	SW Emie	sw construction	661-369-6729	SWconstruction2@gmail.com

INDEX OF DOCUMENTS

DIVISION 00

BIDDING AND CONTRACT REQUIREMENTS

- 01 Notice to Contractors Calling for Bids
- 02 Instructions to Bidders
- 03 Bid Form
- 04 Substitution Listing
- 05 List of Subcontractors
- 06 Bid Bond
- 07 Non-Collusion Affidavit
- 08 Exclusion of Lead-Asbestos Products
- 09 Construction Agreement
- 10 General Conditions
- 11 Supplemental General Conditions
- 12A Dual Obligee Payment Bond
- 13A Dual Obligee Performance Bond
- 14 Workers Compensation Certificate
- ~~15 Guarantee – See Form P922~~
- 16 Fingerprinting Certification by Contractors
- 18 Escrow Agreement for Security Deposits in Lieu of Retention
- 20 Drug-Free Workplace Certification
- 23 Contractor's Qualifications Questionnaire
- 27 Ira Contracting Act
- Certification of Compliance re: Executive Order N-6-22P700 – DAS 140 – Public Works Contract Award
 - P700-A – DAS 140 - Instructions
 - P800 – Construction Schedule
 - Subcontractor Application for Payment
 - P903 – Contractors Daily Report
 - P904 – Request for Information (RFI)
 - P905 – Submittal Identification
 - P906 – Contact Person Form (Complete as a Prime Contractor and include one for each Subcontractor and any third tier Subcontractors)
 - P907 – Short Interval Schedule
 - P908 – Contractor's Trade Classification
 - P909 – Safety Program Package
 - P909-1 – Site Safety Plan
 - P909-2 – Personal Protective Equipment Policy
 - P909-3 – Safety Notice
 - P909-4 – Code of Safe Practices
 - P909-5 – Hazardous Communications (SDS)
 - P910 – Substitution Warranty
 - P911 – Prevailing Wage Certification

INDEX OF DOCUMENTS

- P912 – Consent of Surety
 - P913 – Instructions for Waivers and Releases
 - P914 – Conditional Waiver & Release Upon Progress Payment
 - P915 – Unconditional Waiver & Release Upon Progress Payment
 - P916 – Conditional Waiver & Release Upon Final Payment
 - P917 – Unconditional Waiver & Release Upon Final Payment
 - P918 – Notice of Claim
 - P919 – PWC 100 Information Sheet (Complete as a Prime Contractor; include one for each Subcontractor and any third tier Subcontractors).
 - P920 – Apprenticeship Closeout Certification
 - P921 – Certificate of Non-Use of Lead or Asbestos Materials
 - P922 – Contractor’s Guarantee
 - P924 – Prevailing Wage Certification
 - P925 – Notice of Completion Form
 - W-9 – Tax Identification Form
 - ✓ – Proof of DIR Registration
- *Symbol indicates items that must be submitted with Bid at time of Bid opening.*
- ✓ *Symbol indicates items that must be submitted with Bid at time of Bid opening when required by Bid Documents.*

BID PACKAGE WORK SCOPES:

- 01-74-000/Janitorial Cleaning
- 02-11-000/Site Demo & Earthwork
- 02-14-000/Site Utilities
- 02-23-000/Decorative Fence
- 02-32-000/Landscape & Irrigation
- 03-01-000/Concrete
- 04-20-000/Masonry
- 05-10-000/Structural Steel & Misc. Iron
- 06-10-000/Rough Carpentry
- 07-40-000/Metal Wall Panels
- 07-50-000/Asphalt Shingle Roofing
- 08-10-000/Doors, Frames, Hardware
- 08-30-000/Overhead Coiling Doors-Smoke Curtains
- 09-26-000/Drywall
- 09-70-070/FRP
- 09-90-000/Painting
- 10-00-000/Architectural Specialties
- 10-81-000/Toilet Accessories

INDEX OF DOCUMENTS

- 13-11-000/Greenhouse
- 13-16-000/Shadehouse
- 15-40-000/Plumbing
- 15-70-000/HVAC & Sheet Metal
- 16-00-000/Electrical

END OF INDEX