

Bakersfield College Planning for the Future

Greater Bakersfield Chamber of Commerce
Governmental Relations Committee

November 30, 2007



Bakersfield College
Cerro Coso Community College
Porterville College

Kern Community College District



Kern Community College District

College Service Areas

- Cerro Coso College
- Porterville College
- Bakersfield College



24,800 square miles in size.

Population base of 831,000.

Serving 26,000 students.

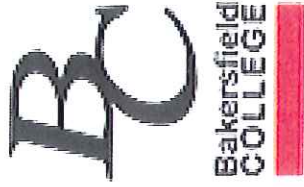
Serving parts of Kern, Tulare, Inyo, Mono and San Bernardino counties.

Largest service area of any community college district in California; one of the largest nationwide.

Roughly the size of the Netherlands and Belgium combined.

Larger than the state of West Virginia.

KCCCD FACTS



BC Expansion

Planning for the future:
2000 -2050

- ◆ Measure G/SRID 2002
- ◆ Facility Master Plan 2004

Site Selection Criteria

- ◆ Population Growth Projections
- ◆ Growth Hot Spots
- ◆ 20 Minute Drive Zones
- ◆ Population Density
& Underserved Areas
- ◆ Existing & Planned Roadways
- ◆ Cost

Community Statistics

1135-2
Tab 9161

Population

- Kern County population has grown about 20% since 2001, an average of about 2.7% annually.
- As of January 1, 2007, Kern County had a population of approximately 801,648⁽¹⁾.
- Bakersfield, Kern's County Seat and California's third largest inland city, is also recognized as one of the fastest growing with 41% rate of growth from 1990-2000; the City's population is estimated currently at 323,213; by 2015, the City is projected to grow by about 28% to 398,700; and by 2030, the population is forecast to grow 82% to almost 730,000.

□ The unemployment rate has declined by 0.8 percent to 7.6 percent in 2006. The County's industry employment increased by almost 13% from 2002-2006. The three industry leading job growths were: trade, transportation, and utilities; construction; and agriculture.

- Mechanical Technicians
- Construction
- Automobile MRs
- Welders
- Drafting
- Electronics
- Wind
- Geothermal
- PV
- Trucks

Source: State Department Of Finance Estimates.

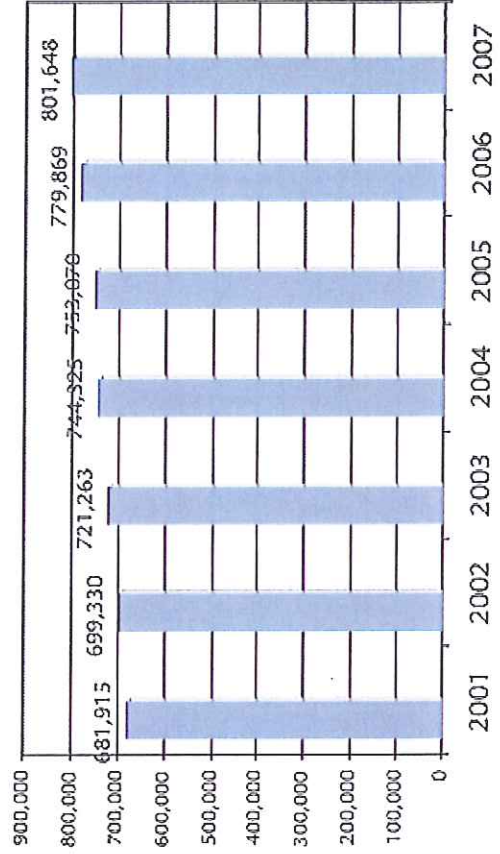
2007 Population and % Change

- Bakersfield 323,213 3.6
- Arvin 15,042 7.3
- Delano 53,037 7.4
- Shafter 14,982 3.2
- Tehachapi 13,063 3.9

1135-2
Tab 9161
Budget
40k
89

Kern County Population Growth		
1980-1990	1990-2000	2000-2005
34.94%	21.45%	13.13%

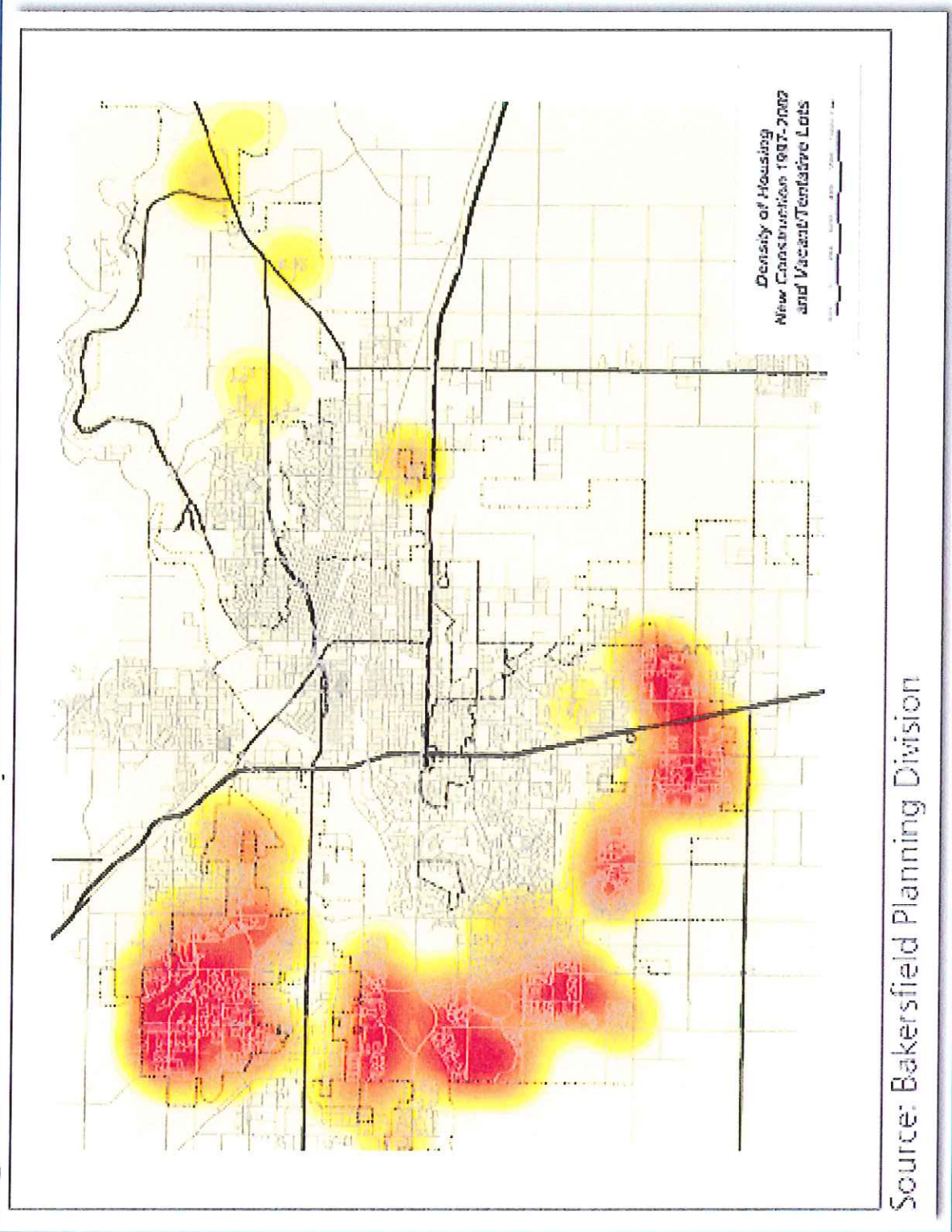
Kern County Population



Source: Kern Economic Development Corporation

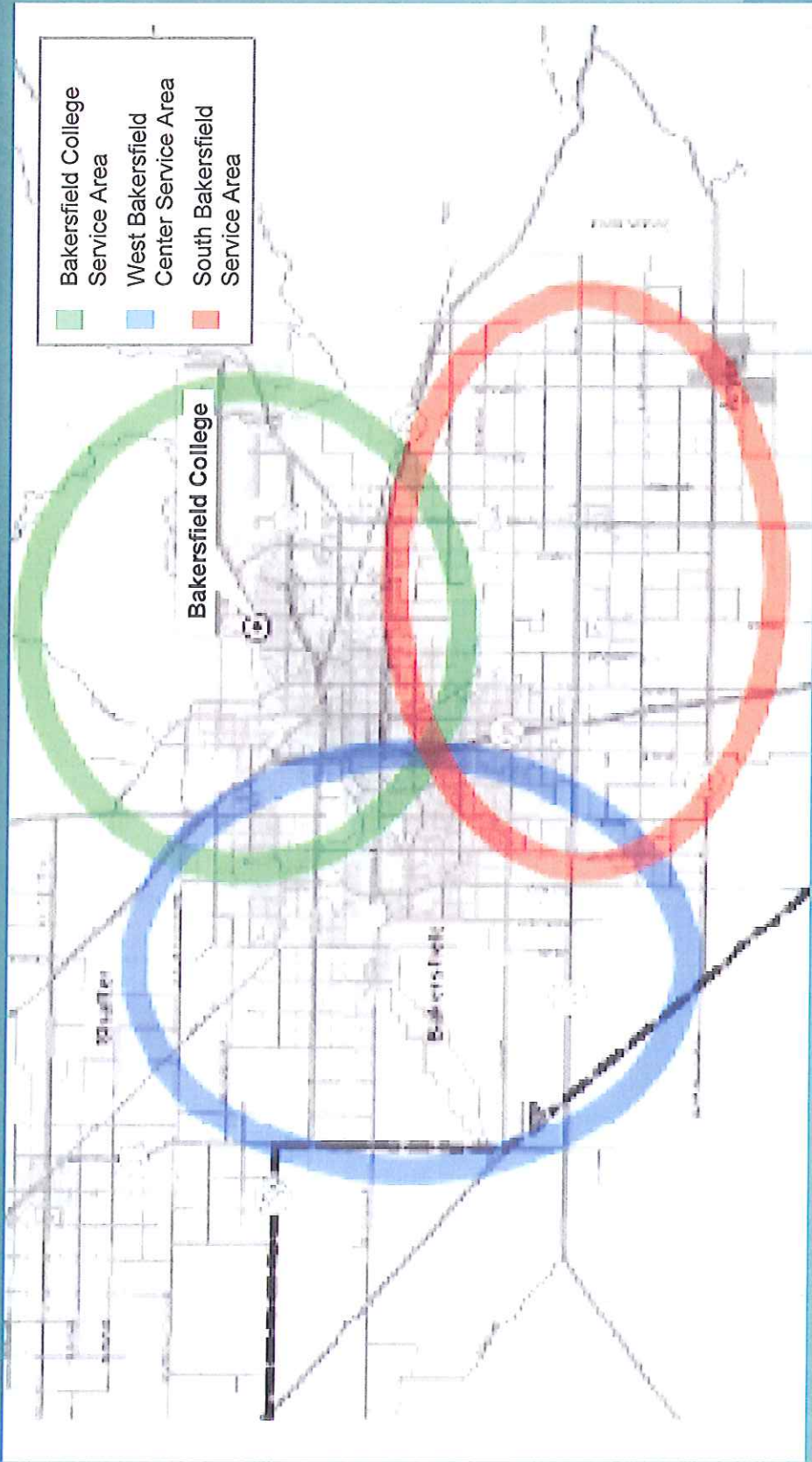
K-12 projections
Kern 1% to 2% may decline
Tulare 1%
51,467 13.9%

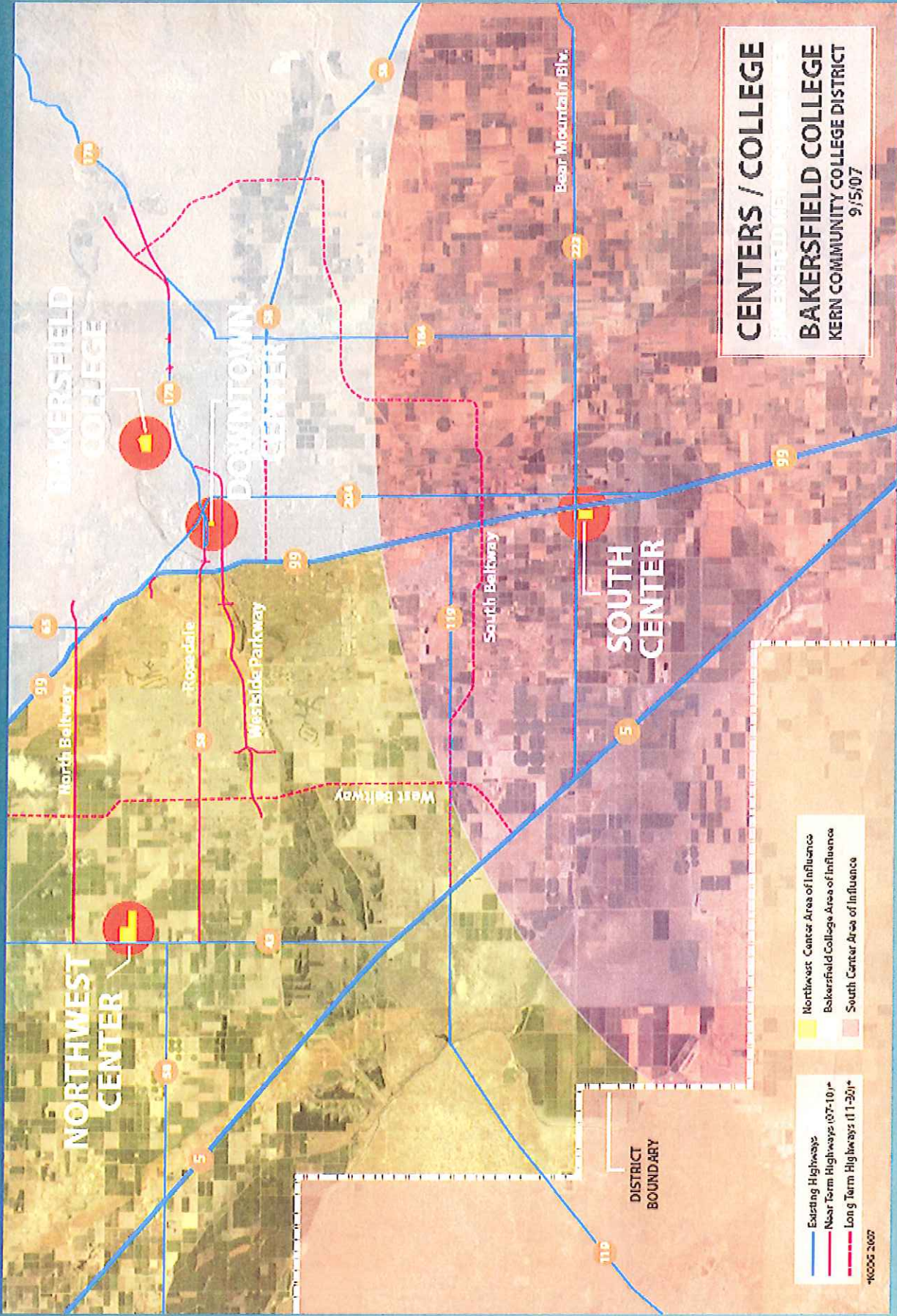
Growth "Hot Spots"



Source: Bakersfield Planning Division

Long Term Campus Service Areas





CENTERS / COLLEGE
 BAKERSFIELD COLLEGE
 KERN COMMUNITY COLLEGE DISTRICT
 9/5/07

Northwest Center Area of Influence
 Bakersfield College Area of Influence
 South Center Area of Influence

Existing Highways
 Near Term Highways (07-10)*
 Long Term Highways (11-20)*

*KCCOG 2/07

DISTRICT
 BOUNDARY

BAKERSFIELD
 COLLEGE

DOWNTOWN
 CENTER

NORTHWEST
 CENTER

SOUTH
 CENTER

North Bellway

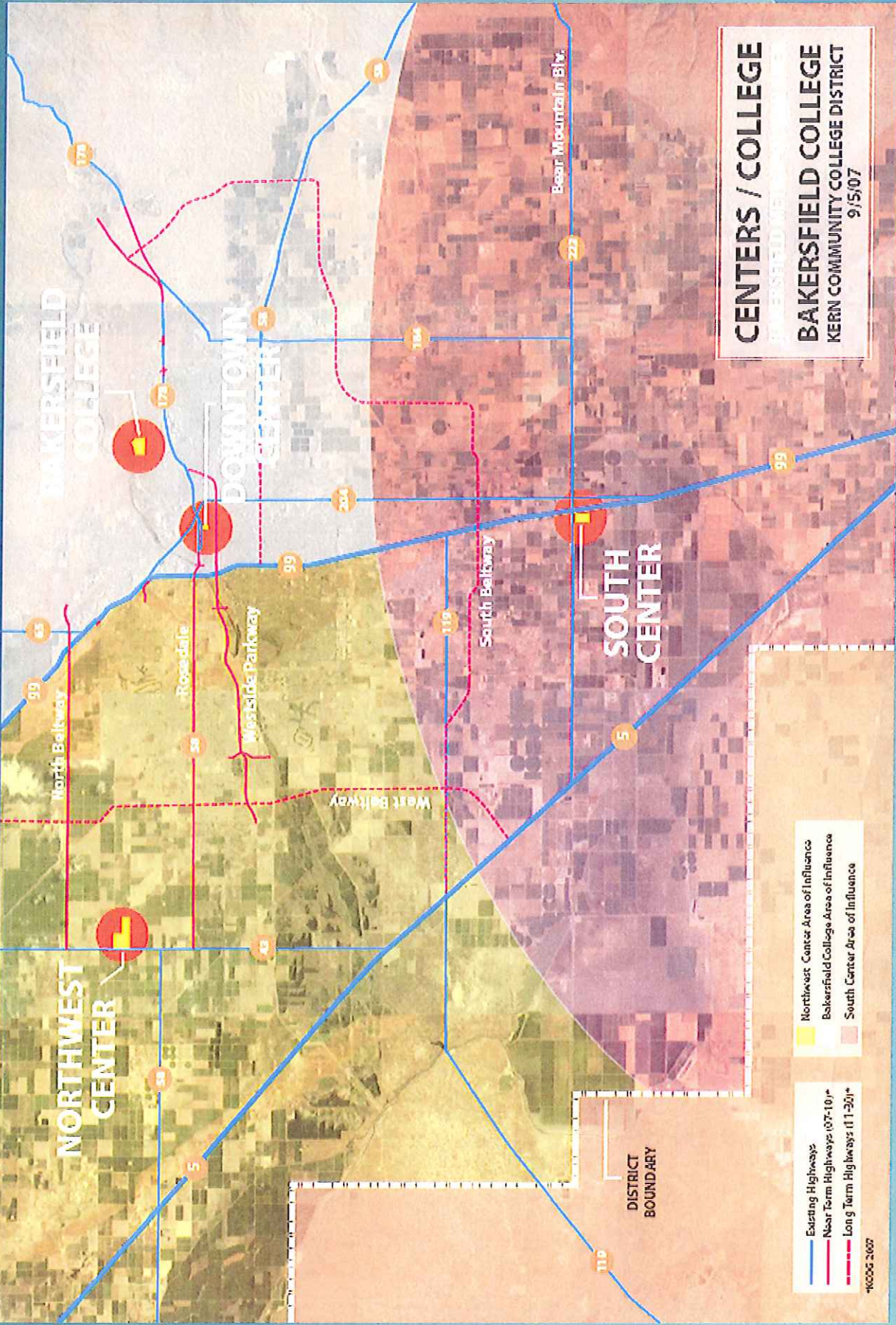
Rosedale

Missisipi Parkway

West Bellway

South Bellway

Bear Mountain Blvd.



Land Acquisitions

- ◆ Cecil Avenue 50 Acres \$1.3
- ◆ Kratzmeyer 225 Acres \$12.5
- ◆ Bear Mountain 126 Acres \$3.6
66 Acres donated by
Bolthouse Properties Inc.

Questions & Answers

Bakersfield College
Cerro Coso Community College
Porterville College

