

Facilities and Construction Group Monthly Report

Scheduled Maintenance Projects

Project Title	Project Status	Project Budget/PPR	Project Expenses to Date	Funding Source	Projected Const. Start/Completion	PM Comments	Issues	Photo
Elevator Repair & Replacements / Math Science / Student Services / Language Arts	Construction	\$790,800	\$153,382	BC101/ MG100/ CD100	1/2015- 7/2015	Project bid. Superior Construction was low bidder. Construction Contract approval December board meeting. This project has a deadline on funding June 2015	2	5
NE Parking Lot & ADA Upgrades & Shade Structure	Completed	\$427,500	\$324,230	MG100	3/2014 - 9/2014	Awaiting DSA certification.		8
Aera STEM Success Center	Design	\$1,000,000	\$720	MG100 STEM - RP257	8/21/15 - 2/4/16	11/13 Design Documents received and sent to all stakeholders for review/comment.		
Campus Wide Water and Gas Line Replacement	Construction	\$3,920,200	\$2,825,590	SRID	6/2013 - 3/2015	WM Lyles starting tie in to all buildings for water and gas. Project is 75% complete. Safety and dust issues addressed.		4
Football Field Practice Lights	Design	\$253,700	\$8,801	SRID	8/2015- 10/2015	Construction Documents review by Campus and are being reviewed by Facilities		
Campus Wide Path of Travel	Design	\$438,564	\$16,657	SRID CD100	6/2015- 8/2015	Project was submitted to DSA for plan check. This funding has a deadline of June 2015		
Prop 39 year 2 Exterior Lights	Design	\$377,503	\$6,812	DO102	2/2015- 6/2015	Plans to be ready for advertisement. This funding has dead line of June 2015		
Fire Alarm Repair Code Compliance	Pre Design	\$1,118,310	\$2,673	PFP/CD100	8/2015- 12/2015	API is being hired to prepare Asbuilts documents of the full campus fire alarm devices and panels. This project has a deadline of June 2016		
Exterior Way Finding Signage	Pre Design	\$122,700	\$0	SRID/BC101	6/2015- 8/2015	Contracts sent to APCO for signature		
Student Services AHU, Chiller Loop Connection, Chiller Removal Project	DSA	\$876,150	\$57,284	MG100	10/13 - 9/15	Project is at DSA for review and approval. Expect approved plan by December 2014.		6
Addition of cooling to the Gymnasium	DSA	\$562,000	\$31,643	MG100	9/1/14 - 9/1/15	Engineer working on DSA Fire Alarm comments. Request made for campus to provide FA plans for Gym & La Buildings to proceed with design.	3	

Capital Projects

Performing Arts Modernization (SAM)	Construction	\$19,273,903	\$16,412,591	LB100 MG100	4/2013 - 6/2014	Work is ongoing. Change Order 7 to be processed for November Board. Updated contractor schedule shows last punch walk to be on October 13, 2014	1	3
Photo Voltaic Field	Close out	\$9,292,500	\$8,771,489	BC101	12/2009 - 09/2014	All Closeout documents at DSA. Awaiting certification; tied to the Shade Structure.		
GET Facility	100% complete	\$1,229,912	\$22,213	GET	6/2011 - 11/2012	DSA submitted letter - project closed without certification. Work completed except for punch list (one light). Contract awarded , material ordered. Expect completion in November.		2
Performing Arts East-Side Site Improvements	Construction	\$1,303,872	\$330,772	MG100	12/2013 - 1/2015	Revised PPR and award are approved. Webb Brothers Construction to mobilize October 6, 2014.		7
New Maintenance and Operations Building	Design	\$4,681,184	\$189,672	MG100	4/2014 - 6/2016	Campus has sign off on construction plans. Facilities are reviewing 100% construction budget provided by WLC. Constructability review complete, and currently performing VE.		1

Capital Projects - 5 Year Plan

Student Services Mod (IPP)	Approved 5 Year Facilities Plan to State	\$22,385,000	\$35,227	State and Local Bond	TBD	Converted to an IPP		
Language Arts Remodel (FPP)	New 5 Year Facilities Plan to State	\$12,355,000	\$0	State and Local Bond	TBD	Awaiting State decision on placing Bond on Ballot		

Issues

1. Contractor requested time extension. Request was rejected.
2. This project needs to be accelerated in order to complete the POT for the Performing Arts
3. Without DSA approved plans for the existing FA, the system for the entire bldg. will have to be brought up to code adding \$300,000. Adding a new FA system will trigger a complete access review adding additional cost.

Project Photographs





7



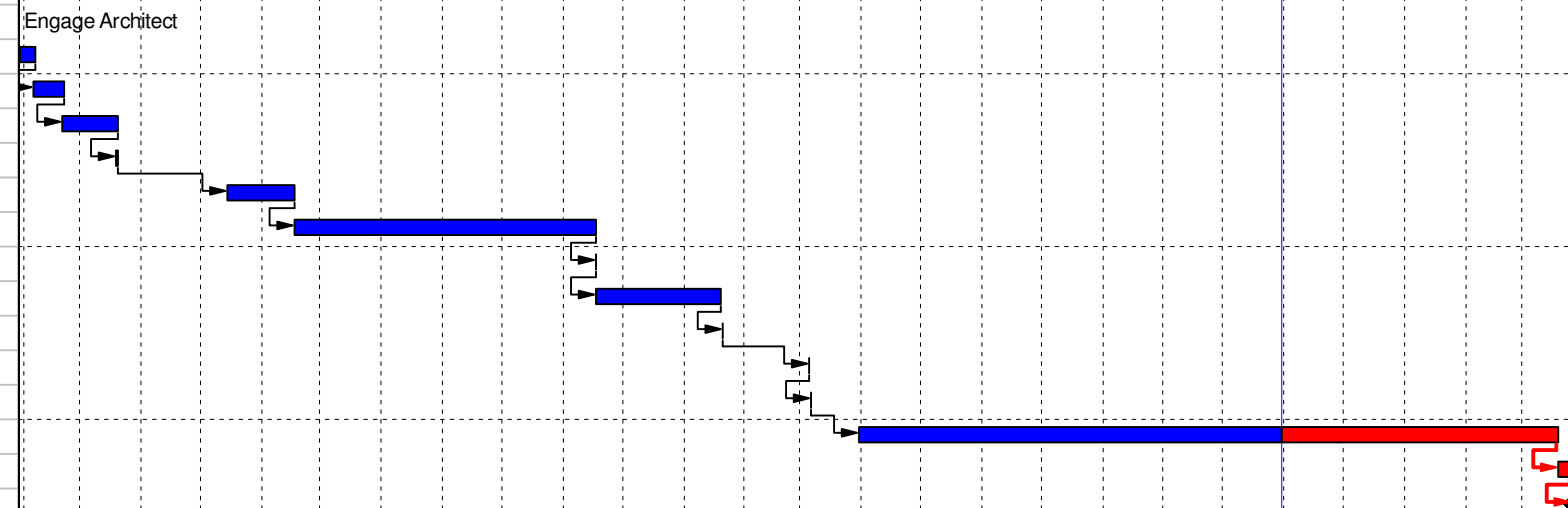
8

9

Please contact any of the following regarding questions or comments associated with this report:

Eitan Aharoni	Director of Facilities	661.336.5095	eaharoni@gafcon.com
Daniel Reed	Project Manager	661.336.5181	dareed@kccd.edu
Joe DeRosa	Project Manager	661.336.5022	jderosa@kccd.edu
Kim Crews	Administrative Assistant	661.336.5174	kcrews@kccd.edu

Activity ID	Activity Name	Original Duration	Remaining Duration	Duration % Complete	Start	Finish	2013												2014												2015					
							Feb	Mar	Apr	May	Jun	Jul	Aug	Sep	Oct	Nov	Dec	Jan	Feb	Mar	Apr	May	Jun	Jul	Aug	Sep	Oct	Nov	Dec	Jan	Feb	Mar				
BC Campus Water & Gas Line Replacement		577	105	81.8%	09-Jan-13 A	26-Mar-15																														
A0001	BC Campus Water & Gas Line Replacement LOE	323	105	67.49%	09-Jan-13 A	26-Mar-15																														
A1100	PPR/Budget Approval	10	0	100%	09-Jan-13 A	22-Jan-13 A																														
A2000	Engage Architect	0	0	100%	22-Jan-13 A																															
A2020	Schematic Design	6	0	100%	30-Jan-13 A	06-Feb-13 A																														
A2040	Design Development	11	0	100%	06-Feb-13 A	20-Feb-13 A																														
A2070	Construction Documents	20	0	100%	20-Feb-13 A	20-Mar-13 A																														
A2080	50% Constructability	1	0	100%	20-Mar-13 A	20-Mar-13 A																														
A2140	DSA Submit	24	0	100%	15-May-13 A	17-Jun-13 A																														
A2150	DSA Backcheck	67	0	100%	18-Jun-13 A	18-Nov-13 A																														
A2160	DSA Approval	0	0	100%	18-Nov-13 A	18-Nov-13 A																														
A2180	Bid Phase	23	0	100%	18-Nov-13 A	20-Jan-14 A																														
A2190	Bid Opening	0	0	100%	21-Jan-14 A	21-Jan-14 A																														
A2200	Board of Trustees Award	0	0	100%	06-Mar-14 A	06-Mar-14 A																														
A3000	Construction Start Date (NTP)	0	0	100%	07-Mar-14 A	07-Mar-14 A																														
A3010	Construction Duration	213	100	53.05%	31-Mar-14 A	19-Mar-15																														
A3020	Punch List	5	5	0%	20-Mar-15	26-Mar-15																														
A3060	NOC	0	0	0%		26-Mar-15																														



█ Remaining Level of Effort
 █ Actual Work
 █ Critical Remaining Work
█ Actual Level of Effort
 █ Remaining Work
 ◆ Milestone

Activity ID	Activity Name	Original Duration	Remaining Duration	Duration % Complete	Start	Finish	2012												2013												2014											
							Jan	Feb	Mar	Apr	May	Jun	Jul	Aug	Sep	Oct	Nov	Dec	Jan	Feb	Mar	Apr	May	Jun	Jul	Aug	Sep	Oct	Nov	Dec	Jan	Feb	Mar	Apr	May	Jun	Jul	Aug	Sep	Oct	Nov	Dec
BC Performing Arts Mod (SAM)																																										
A0001	BC Performing Arts Mod (SAM) LOE	498	0	100%	29-Sep-08 A	31-Oct-14	[Gantt bar from Sep 2008 to Oct 2014]																																			
A1100	PPR/Budget Approval	1	0	100%	29-Sep-08 A	29-Sep-08 A	[Gantt bar for Sep 2008]																																			
A2000	Engage Architect	0	0	100%	30-Sep-08 A	30-Sep-08 A	[Gantt bar for Sep 2008]																																			
A2010	Architectural Program	925	0	100%	29-Sep-09 A	12-Apr-13 A	[Gantt bar from Sep 2009 to Apr 2013]																																			
A2020	Schematic Design	19	0	100%	29-Sep-09 A	23-Oct-09 A	[Gantt bar for Oct 2009]																																			
A2040	Design Development	306	0	100%	26-Oct-09 A	28-Dec-10 A	[Gantt bar from Oct 2009 to Dec 2010]																																			
A2080	50% Constructability	0	0	100%	05-Mar-10 A	05-Mar-10 A	[Gantt bar for Mar 2010]																																			
A2110	95% Constructability	1	0	100%	16-Apr-10 A	16-Apr-10 A	[Gantt bar for Apr 2010]																																			
A2130	Value Engineering 3	288	0	100%	13-Dec-11 A	17-Jan-13 A	[Gantt bar from Dec 2011 to Jan 2013]																																			
A2150	DSA Backcheck	5	0	100%	11-Oct-10 A	15-Oct-10 A	[Gantt bar from Oct 2010 to Oct 2010]																																			
A2160	DSA Approval	11	0	100%	17-Sep-12 A	02-Oct-12 A	[Gantt bar from Sep 2012 to Oct 2012]																																			
A2180	Bid Phase	60	0	100%	23-Oct-12 A	14-Jan-13 A	[Gantt bar from Oct 2012 to Jan 2013]																																			
A2190	Bid Opening	1	0	100%	17-Jan-13 A	17-Jan-13 A	[Gantt bar for Jan 2013]																																			
A2200	Board of Trustees Award	1	0	100%	14-Feb-13 A	14-Feb-13 A	[Gantt bar for Feb 2013]																																			
A2210	CCCCO Approval of BID Award	0	0	100%	04-Mar-13 A	04-Mar-13 A	[Gantt bar for Mar 2013]																																			
A3000	Construction Start Date (NTP)	0	0	100%	16-Apr-13 A	16-Apr-13 A	[Gantt bar for Apr 2013]																																			
A3010	Construction Duration	304	0	100%	11-Apr-13 A	27-Oct-14 A	[Gantt bar from Apr 2013 to Oct 2014]																																			
A3020	Punch List	2	25	0%	11-Aug-14 A	04-Dec-14	[Gantt bar from Aug 2014 to Dec 2014, partially red]																																			
A3030	FFE / IT Installations	15	0	100%	12-Aug-14 A	10-Oct-14 A	[Gantt bar from Aug 2014 to Oct 2014]																																			
A3040	Certificate of Substantial Completion	0	0	0%		31-Oct-14	[Milestone diamond at Oct 2014]																																			
A3050	Occupancy	0	0	0%		04-Dec-14	[Milestone diamond at Dec 2014]																																			
A3060	NOC	0	0	0%		31-Oct-14	[Milestone diamond at Oct 2014]																																			
A3070	Project Complete	0	0	0%		04-Dec-14	[Milestone diamond at Dec 2014]																																			

█ Remaining Level of Effort
 █ Actual Work
 █ Critical Remaining Work
█ Actual Level of Effort
 █ Remaining Work
 ◆ Milestone

Activity ID	Activity Name	Original Duration	Remaining Duration	Duration % Complete	Start	Finish	2012												2013												2014												2015											
							F	Mar	Apr	M	Jun	Jul	A	S	Oct	N	D	Jan	F	M	Apr	M	Jun	Jul	A	S	Oct	N	D	Jan	F	M	Apr	M	Jun	Jul	A	S	Oct	N	D	Jan	F											
BC Performing Arts East Side Improvements																																																						
A0001	BC Performing Arts East Side Improvements LOE	353	87	89.65%	30-Jan-12 A	03-Mar-15																																																
A1100	PPR/ Budget Approval	25	0	100%	30-Jan-12 A	29-Feb-12 A																																																
A2000	Engage Architect	47	0	100%	14-May-13 A	13-Jun-13 A																																																
A2010	Architectural Program	6	0	100%	14-Jun-13 A	20-Jun-13 A																																																
A2020	Schematic Design	30	0	100%	28-Jun-13 A	05-Aug-13 A																																																
A2030	Schematic Cost Estimate (1)	9	0	100%	30-Jul-13 A	08-Aug-13 A																																																
A2040	Design Development	30	0	100%	09-Aug-13 A	16-Sep-13 A																																																
A2050	DD Cost Estimate (2)	3	0	100%	12-Sep-13 A	16-Sep-13 A																																																
A2070	Construction Documents	26	0	100%	12-Sep-13 A	05-Nov-13 A																																																
A2120	CD Cost Estimate (3)	4	0	100%	09-Oct-13 A	09-Oct-13 A																																																
A2140	DSA Submit	120	0	100%	05-Nov-13 A	19-May-14 A																																																
A2150	DSA Back Check	10	0	100%	20-May-14 A	30-May-14 A																																																
A2160	DSA Approval	0	0	100%	30-May-14 A																																																	
A2180	Bid Phase - Phase 1 Demolition	18	0	100%	29-Oct-13 A	19-Nov-13 A																																																
A2190	Bid Opening Phase 1 Demolition	0	0	100%	19-Nov-13 A	19-Nov-13 A																																																
A2200	Board Award Phase 1 Demolition	25	0	100%	19-Nov-13 A	19-Dec-13 A																																																
A2210	Construction Phase 1 Demolition	87	0	100%	18-Nov-13 A	22-Nov-13 A																																																
A2300	Bid Phase Phase 2 Construction	11	0	100%	03-Jun-14 A	30-Jun-14 A																																																
A2301	Bid Opening Phase 2 Construction	0	0	100%	30-Jun-14 A	30-Jun-14 A																																																
A2302	Bid Award Phase 2 Construction	14	0	100%	01-Jul-14 A	14-Aug-14 A																																																
A3010	Start Construction Phase 2	102	76	25.58%	06-Oct-14 A	13-Feb-15																																																
A3020	Punch List	11	11	0%	16-Feb-15	03-Mar-15																																																
A3060	NOC	0	0	0%	03-Mar-15	03-Mar-15																																																

█ Remaining Level of Effort
 █ Actual Work
 █ Critical Remaining Work
█ Actual Level of Effort
 █ Remaining Work
 ◆ Milestone

Activity ID	Activity Name	Original Duration	Remaining Duration	Duration % Complete	Start	Finish	2011												2012												2013												2014												2015																										
							F	M	A	M	J	J	A	S	O	N	D	J	F	M	A	M	J	J	A	S	O	N	D	J	F	M	A	M	J	J	A	S	O	N	D	J	F	M	A	M	J	J	A	S	O	N	D	J	F	M	A	M																							
BC Elevator Upgrades & POT Math Science/St																																																																																	
A0001	BC Elevator Upgrades & POT Math Science/Stud Svcs/Lan	754	159	78.91%	20-Jan-11 A	10-Jun-15																																																																											
A1100	PPR/Budget Approval	0	0	100%	20-Jan-11 A	10-Jun-15	PPR/Budget Approval																																																																										
A2040	Design Development	186	0	100%	11-Sep-12 A	12-Jul-13 A																																																																											
A2070	Construction Documents	90	0	100%	19-Apr-13 A	30-Aug-13 A																																																																											
A2140	DSA Submittal and Review	66	0	100%	06-Mar-14 A	26-Sep-14 A																																																																											
A2160	DSA Approval Letter	0	0	100%	26-Sep-14 A	26-Sep-14 A																																																																											
A2180	Bid Phase	30	31	0%	23-Oct-14 A	12-Dec-14																																																																											
A2200	Board of Trustees Award	0	0	0%	18-Dec-14	18-Dec-14																																																																											
A3000	Construction Start Date (NTP)	0	0	0%	07-Jan-15	07-Jan-15																																																																											
A3010	Construction Duration	88	88	0%	07-Jan-15	08-May-15																																																																											
A3020	Punch List	5	5	0%	27-May-15	02-Jun-15																																																																											
A3050	Occupancy	5	5	0%	03-Jun-15	09-Jun-15																																																																											
A3060	NOC	1	1	0%	10-Jun-15	10-Jun-15																																																																											
A3070	Project Completion	0	0	0%		10-Jun-15																																																																											

█ Remaining Level of Effort
 █ Actual Work
 █ Critical Remaining Work
█ Actual Level of Effort
 █ Remaining Work
 ◆ Milestone