

Facilities and Construction Group Monthly Report

**Scheduled Maintenance Projects**

Project Title	Project Status	Project Budget/PPR	Project Expenses to Date	Funding Source	Projected Const. Start/Completion	PM Comments	Issues	Photo
Elevator Repair & Replacements / Math Science / Student Services / Language Arts	Construction	\$790,800	\$152,545	BC101 MG100	9/2014 - 5/2015	This project is advertising for bid.	2	5
NE Parking Lot & ADA Upgrades & Shade Structure	Completed	\$427,500	\$324,230	MG100	3/2014 - 9/2014	Architect submitting closeout documentation to DSA for certification.		8
Aera STEM Success Center	Design	\$1,000,000	\$165	MG100 STEM - RP257	8/21/15 - 2/4/16	Schematic Design Docs approved, currently in Design Development.		
Campus Wide Water and Gas Line Replacement	Construction	\$3,920,200	\$2,038,640	SRID	6/2013 - 12/2014	WM Lyles is working on final patching on the Zones 1, 3 and 4. Project is 65% complete. Safety and dust issues addressed.		4
Football Field Practice Lights	Design	\$253,700	\$5,777	SRID	1/2014 - 4/2014	Construction Documents are 95% complete		
Campus Wide Path of Travel	Design	\$438,564	\$16,657	SRID CD100	6/2015- 8/2015	Project was submitted to DSA for plan check		
Prop 39 year 2 Exterior Lights	Design	\$377,503	\$6,812	DO102	2/2015- 7/2015	Plans to be ready for advertisement in October 2014		
Fire Alarm Repair Code Compliance	Pre Design	\$1,118,310	\$0	PFP/CD100	8/2015- 12/2015	API hired to Investigate and provide a construction Budget. State deadline to construct is June 2016		
Student Services AHU, Chiller Loop Connection, Chiller Removal Project	DSA	\$876,150	\$57,284	MG100	10/13 - 9/15	Project is at DSA for review and approval. Expect approved plan by December 2014.		
Addition of cooling to the Gymnasium	DSA	\$562,000	\$31,633	MG100	9/1/14 - 9/1/15	Engineer working on DSA Fire Alarm comments. Request made for campus to provide FA plans for Gym & La Buildings to proceed with design.		

**Capital Projects**

Performing Arts Modernization (SAM)	Construction	\$19,273,903	\$15,807,814	LB100 MG100	4/2013 - 6/2014	Work is ongoing. Change Order 7 to be processed for November Board. Updated contractor schedule shows last punch walk to be on October 13, 2014	1	3
Photo Voltaic Field	Close out	\$9,292,500	\$8,769,631	BC101	12/2009 - 09/2014	All Closeout documents at DSA. Awaiting certification; tied to the Shade Structure.		

GET Facility	100% complete	\$1,229,912	\$22,213	GET	6/2011 - 11/2012	DSA submitted letter - project closed without certification. Work completed except for punch list (one light). Contract awarded , material ordered. Expect completion in November.	2
Performing Arts East-Side Site Improvements	Construction	\$1,303,872	\$236,282	MG100	12/2013 - 1/2015	Revised PPR and award are approved. Webb Brothers Construction to mobilize October 6, 2014.	7
New Maintenance and Operations Building	Design	\$4,681,184	\$163,235	MG100	4/2014 - 6/2016	Architect preparing the 50% Construction Documents and updated estimate.	
LA Basement Swing Space	Pre Design	\$5,509,600	\$0	MG100	TBD		

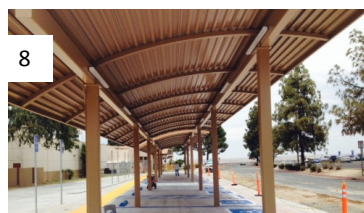
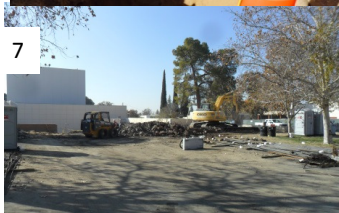
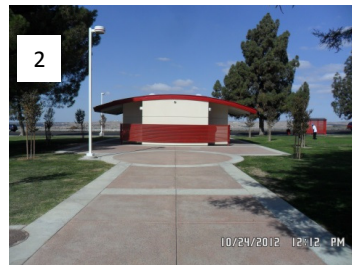
### Capital Projects - 5 Year Plan

Student Services Mod (IPP)	Approved 5 Year Facilities Plan to State	\$22,385,000	\$35,227	State and Local Bond	TBD	Converted to an IPP	
Language Arts Remodel (FPP)	New 5 Year Facilities Plan to State	\$12,355,000	\$0	State and Local Bond	TBD	State will not seek a Bill for the Nov 2014 ballot. Timeline to be revised.	

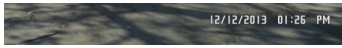
#### Issues

1. Contractor requested time extension. Request was rejected.
2. This project needs to be accelerated in order to complete the POT for the Performing Arts

#### Project Photographs



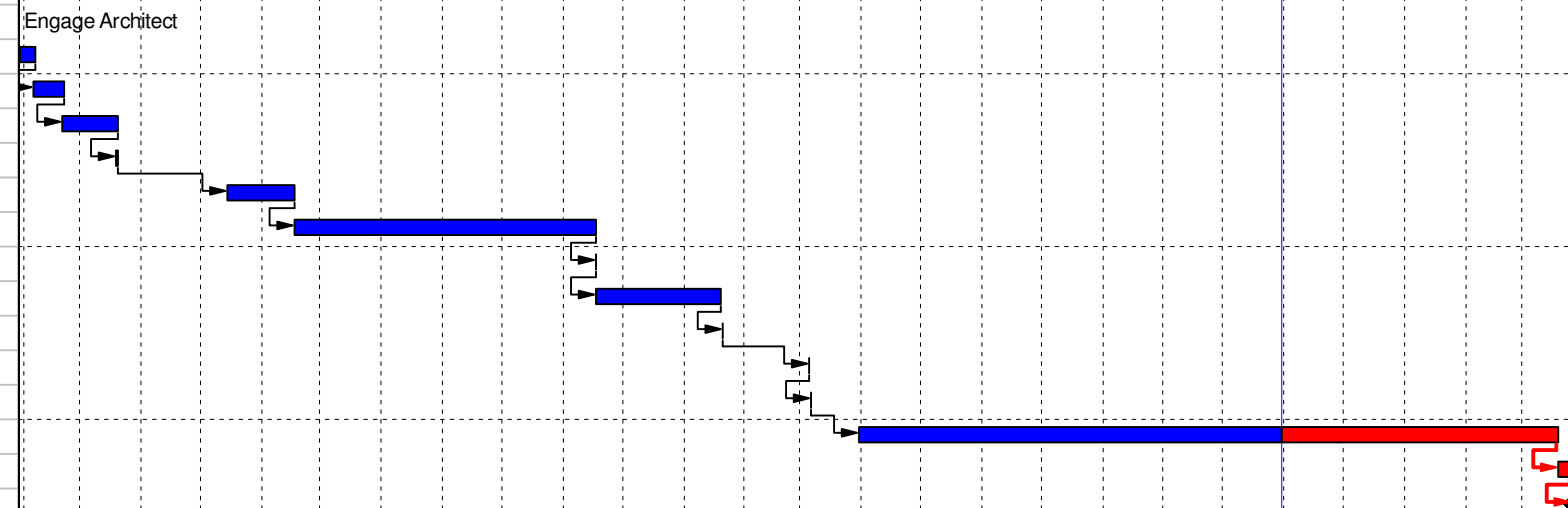
9



Please contact any of the following regarding questions or comments associated with this report:

Eitan Aharoni	Director of Facilities	661.336.5095	<a href="mailto:eaharoni@gafcon.com">eaharoni@gafcon.com</a>
Daniel Reed	Project Manager	661.336.5181	<a href="mailto:dareed@kccd.edu">dareed@kccd.edu</a>
Joe DeRosa	Project Manager	661.336.5022	<a href="mailto:jderosa@kccd.edu">jderosa@kccd.edu</a>
Kevin Mitchell	Project Manager	661.336.5174	<a href="mailto:kevin.mitchell@kccd.edu">kevin.mitchell@kccd.edu</a>
Kim Crews	Administrative Assistant	661.336.5174	<a href="mailto:kcrews@kccd.edu">kcrews@kccd.edu</a>

Activity ID	Activity Name	Original Duration	Remaining Duration	Duration % Complete	Start	Finish	2013												2014												2015					
							Feb	Mar	Apr	May	Jun	Jul	Aug	Sep	Oct	Nov	Dec	Jan	Feb	Mar	Apr	May	Jun	Jul	Aug	Sep	Oct	Nov	Dec	Jan	Feb	Mar				
<b>BC Campus Water &amp; Gas Line Replacement</b>		577	105	81.8%	09-Jan-13 A	26-Mar-15																														
A0001	BC Campus Water & Gas Line Replacement LOE	323	105	67.49%	09-Jan-13 A	26-Mar-15																														
A1100	PPR/Budget Approval	10	0	100%	09-Jan-13 A	22-Jan-13 A																														
A2000	Engage Architect	0	0	100%	22-Jan-13 A																															
A2020	Schematic Design	6	0	100%	30-Jan-13 A	06-Feb-13 A																														
A2040	Design Development	11	0	100%	06-Feb-13 A	20-Feb-13 A																														
A2070	Construction Documents	20	0	100%	20-Feb-13 A	20-Mar-13 A																														
A2080	50% Constructability	1	0	100%	20-Mar-13 A	20-Mar-13 A																														
A2140	DSA Submit	24	0	100%	15-May-13 A	17-Jun-13 A																														
A2150	DSA Backcheck	67	0	100%	18-Jun-13 A	18-Nov-13 A																														
A2160	DSA Approval	0	0	100%	18-Nov-13 A	18-Nov-13 A																														
A2180	Bid Phase	23	0	100%	18-Nov-13 A	20-Jan-14 A																														
A2190	Bid Opening	0	0	100%	21-Jan-14 A	21-Jan-14 A																														
A2200	Board of Trustees Award	0	0	100%	06-Mar-14 A	06-Mar-14 A																														
A3000	Construction Start Date (NTP)	0	0	100%	07-Mar-14 A	07-Mar-14 A																														
A3010	Construction Duration	213	100	53.05%	31-Mar-14 A	19-Mar-15																														
A3020	Punch List	5	5	0%	20-Mar-15	26-Mar-15																														
A3060	NOC	0	0	0%		26-Mar-15																														



█ Remaining Level of Effort   
 █ Actual Work   
 █ Critical Remaining Work  
█ Actual Level of Effort   
 █ Remaining Work   
 ◆ Milestone

Activity ID	Activity Name	Original Duration	Remaining Duration	Duration % Complete	Start	Finish	2012												2013												2014											
							Jan	Feb	Mar	Apr	May	Jun	Jul	Aug	Sep	Oct	Nov	Dec	Jan	Feb	Mar	Apr	May	Jun	Jul	Aug	Sep	Oct	Nov	Dec	Jan	Feb	Mar	Apr	May	Jun	Jul	Aug	Sep	Oct	Nov	Dec
<b>BC Performing Arts Mod (SAM)</b>																																										
A0001	BC Performing Arts Mod (SAM) LOE	498	0	100%	29-Sep-08 A	31-Oct-14	[Gantt bar from Sep 2008 to Oct 2014]																																			
A1100	PPR/Budget Approval	1	0	100%	29-Sep-08 A	29-Sep-08 A	[Gantt bar for Sep 2008]																																			
A2000	Engage Architect	0	0	100%	30-Sep-08 A	30-Sep-08 A	[Gantt bar for Sep 2008]																																			
A2010	Architectural Program	925	0	100%	29-Sep-09 A	12-Apr-13 A	[Gantt bar from Sep 2009 to Apr 2013]																																			
A2020	Schematic Design	19	0	100%	29-Sep-09 A	23-Oct-09 A	[Gantt bar for Oct 2009]																																			
A2040	Design Development	306	0	100%	26-Oct-09 A	28-Dec-10 A	[Gantt bar from Oct 2009 to Dec 2010]																																			
A2080	50% Constructability	0	0	100%	05-Mar-10 A	05-Mar-10 A	[Gantt bar for Mar 2010]																																			
A2110	95% Constructability	1	0	100%	16-Apr-10 A	16-Apr-10 A	[Gantt bar for Apr 2010]																																			
A2130	Value Engineering 3	288	0	100%	13-Dec-11 A	17-Jan-13 A	[Gantt bar from Dec 2011 to Jan 2013]																																			
A2150	DSA Backcheck	5	0	100%	11-Oct-10 A	15-Oct-10 A	[Gantt bar from Oct 2010 to Oct 2010]																																			
A2160	DSA Approval	11	0	100%	17-Sep-12 A	02-Oct-12 A	[Gantt bar from Sep 2012 to Oct 2012]																																			
A2180	Bid Phase	60	0	100%	23-Oct-12 A	14-Jan-13 A	[Gantt bar from Oct 2012 to Jan 2013]																																			
A2190	Bid Opening	1	0	100%	17-Jan-13 A	17-Jan-13 A	[Gantt bar for Jan 2013]																																			
A2200	Board of Trustees Award	1	0	100%	14-Feb-13 A	14-Feb-13 A	[Gantt bar for Feb 2013]																																			
A2210	CCCCO Approval of BID Award	0	0	100%	04-Mar-13 A	04-Mar-13 A	[Gantt bar for Mar 2013]																																			
A3000	Construction Start Date (NTP)	0	0	100%	16-Apr-13 A	16-Apr-13 A	[Gantt bar for Apr 2013]																																			
A3010	Construction Duration	304	0	100%	11-Apr-13 A	27-Oct-14 A	[Gantt bar from Apr 2013 to Oct 2014]																																			
A3020	Punch List	2	25	0%	11-Aug-14 A	04-Dec-14	[Gantt bar from Aug 2014 to Dec 2014, partially red]																																			
A3030	FFE / IT Installations	15	0	100%	12-Aug-14 A	10-Oct-14 A	[Gantt bar from Aug 2014 to Oct 2014]																																			
A3040	Certificate of Substantial Completion	0	0	0%		31-Oct-14	[Milestone diamond at Oct 2014]																																			
A3050	Occupancy	0	0	0%		04-Dec-14	[Milestone diamond at Dec 2014]																																			
A3060	NOC	0	0	0%		31-Oct-14	[Milestone diamond at Oct 2014]																																			
A3070	Project Complete	0	0	0%		04-Dec-14	[Milestone diamond at Dec 2014]																																			

█ Remaining Level of Effort   
 █ Actual Work   
 █ Critical Remaining Work  
█ Actual Level of Effort   
 █ Remaining Work   
 ◆ Milestone

Activity ID	Activity Name	Original Duration	Remaining Duration	Duration % Complete	Start	Finish	2012												2013												2014												2015											
							F	Mar	Apr	M	Jun	Jul	A	S	Oct	N	D	Jan	F	M	Apr	M	Jun	Jul	A	S	Oct	N	D	Jan	F	M	Apr	M	Jun	Jul	A	S	Oct	N	D	Jan	F											
<b>BC Performing Arts East Side Improvements</b>																																																						
A0001	BC Performing Arts East Side Improvements LOE	353	87	89.65%	30-Jan-12 A	03-Mar-15																																																
A1100	PPR/ Budget Approval	25	0	100%	30-Jan-12 A	29-Feb-12 A																																																
A2000	Engage Architect	47	0	100%	14-May-13 A	13-Jun-13 A																																																
A2010	Architectural Program	6	0	100%	14-Jun-13 A	20-Jun-13 A																																																
A2020	Schematic Design	30	0	100%	28-Jun-13 A	05-Aug-13 A																																																
A2030	Schematic Cost Estimate (1)	9	0	100%	30-Jul-13 A	08-Aug-13 A																																																
A2040	Design Development	30	0	100%	09-Aug-13 A	16-Sep-13 A																																																
A2050	DD Cost Estimate (2)	3	0	100%	12-Sep-13 A	16-Sep-13 A																																																
A2070	Construction Documents	26	0	100%	12-Sep-13 A	05-Nov-13 A																																																
A2120	CD Cost Estimate (3)	4	0	100%	09-Oct-13 A	09-Oct-13 A																																																
A2140	DSA Submit	120	0	100%	05-Nov-13 A	19-May-14 A																																																
A2150	DSA Back Check	10	0	100%	20-May-14 A	30-May-14 A																																																
A2160	DSA Approval	0	0	100%	30-May-14 A																																																	
A2180	Bid Phase - Phase 1 Demolition	18	0	100%	29-Oct-13 A	19-Nov-13 A																																																
A2190	Bid Opening Phase 1 Demolition	0	0	100%	19-Nov-13 A	19-Nov-13 A																																																
A2200	Board Award Phase 1 Demolition	25	0	100%	19-Nov-13 A	19-Dec-13 A																																																
A2210	Construction Phase 1 Demolition	87	0	100%	18-Nov-13 A	22-Nov-13 A																																																
A2300	Bid Phase Phase 2 Construction	11	0	100%	03-Jun-14 A	30-Jun-14 A																																																
A2301	Bid Opening Phase 2 Construction	0	0	100%	30-Jun-14 A	30-Jun-14 A																																																
A2302	Bid Award Phase 2 Construction	14	0	100%	01-Jul-14 A	14-Aug-14 A																																																
A3010	Start Construction Phase 2	102	76	25.58%	06-Oct-14 A	13-Feb-15																																																
A3020	Punch List	11	11	0%	16-Feb-15	03-Mar-15																																																
A3060	NOC	0	0	0%	03-Mar-15	03-Mar-15																																																

█ Remaining Level of Effort   
 █ Actual Work   
 █ Critical Remaining Work  
█ Actual Level of Effort   
 █ Remaining Work   
 ◆ Milestone

Activity ID	Activity Name	Original Duration	Remaining Duration	Duration % Complete	Start	Finish	2011												2012												2013												2014												2015																										
							F	M	A	M	J	J	A	S	O	N	D	J	F	M	A	M	J	J	A	S	O	N	D	J	F	M	A	M	J	J	A	S	O	N	D	J	F	M	A	M	J	J	A	S	O	N	D	J	F	M	A	M																							
<b>BC Elevator Upgrades &amp; POT Math Science/St</b>																																																																																	
A0001	BC Elevator Upgrades & POT Math Science/Stud Svcs/Lan	754	159	78.91%	20-Jan-11 A	10-Jun-15																																																																											
A1100	PPR/Budget Approval	0	0	100%	20-Jan-11 A	10-Jun-15	PPR/Budget Approval																																																																										
A2040	Design Development	186	0	100%	11-Sep-12 A	12-Jul-13 A																																																																											
A2070	Construction Documents	90	0	100%	19-Apr-13 A	30-Aug-13 A																																																																											
A2140	DSA Submittal and Review	66	0	100%	06-Mar-14 A	26-Sep-14 A																																																																											
A2160	DSA Approval Letter	0	0	100%	26-Sep-14 A	26-Sep-14 A																																																																											
A2180	Bid Phase	30	31	0%	23-Oct-14 A	12-Dec-14																																																																											
A2200	Board of Trustees Award	0	0	0%	18-Dec-14	18-Dec-14																																																																											
A3000	Construction Start Date (NTP)	0	0	0%	07-Jan-15	07-Jan-15																																																																											
A3010	Construction Duration	88	88	0%	07-Jan-15	08-May-15																																																																											
A3020	Punch List	5	5	0%	27-May-15	02-Jun-15																																																																											
A3050	Occupancy	5	5	0%	03-Jun-15	09-Jun-15																																																																											
A3060	NOC	1	1	0%	10-Jun-15	10-Jun-15																																																																											
A3070	Project Completion	0	0	0%		10-Jun-15																																																																											

█ Remaining Level of Effort   
 █ Actual Work   
 █ Critical Remaining Work  
█ Actual Level of Effort   
 █ Remaining Work   
 ◆ Milestone