

Facilities and Construction Group Monthly Report

Scheduled Maintenance Projects

Project Title	Project Status	Project Budget/PPR	Project Expenses to Date	Funding Source	Projected Const. Start/Completion	PM Comments	Issues	Photo
Student Ctr. Roofing & HVAC, Ceiling Replacement	Construction	\$1,192,543	\$1,118,770	PC101 MG100	5/2013 - 9/2014	Closeout documents in progress. NOC going to the October Board. Will need to resolve Fire Alarm and emergency lighting for DSA close-out.		2
Fire Lane & ADA Parking Lot	Close out	\$562,119	\$536,421	PC101 MG100	5/2013 - 9/2014	NOC to go to the September Board meeting.		1
Science/Math Chiller, Boilers, Water Heaters and pumps	Construction	\$974,548	\$859,315	PC101 MG100	5/2013 - 10/2014	Work completed, CO to be finalized, CO and NOC to go to the November Board.		
Gym Reroof and HVAC Replacement	Design	\$2,900,000	\$89,265	PC101 MG100	10/2015 8/2016	Project is in design.		
Central Plant and Chiller Loop	DSA	\$1,300,000	\$661,468	MG100	3/2014- 10/2014	CCD's #6, 7 & 9 will roll into a change order #2 with a time extension for DSA delays. This will go to the November Board.	1	3

Capital Projects - 5 Year Plan

Allied Health Facility (FPP)	Roll from last year 5 Year Facilities Plan at State	\$15,820,000	\$297,574	LP100 MG100	TBD	State will not seek a Bill for the Nov 2014 ballot. Timeline to be revised. Expenses to date are for planning.		
------------------------------	---	--------------	-----------	----------------	-----	--	--	--

Issues

1. Contractor may request payment for remobilization and rental due to project delays caused by DSA shut down.

Project Photographs

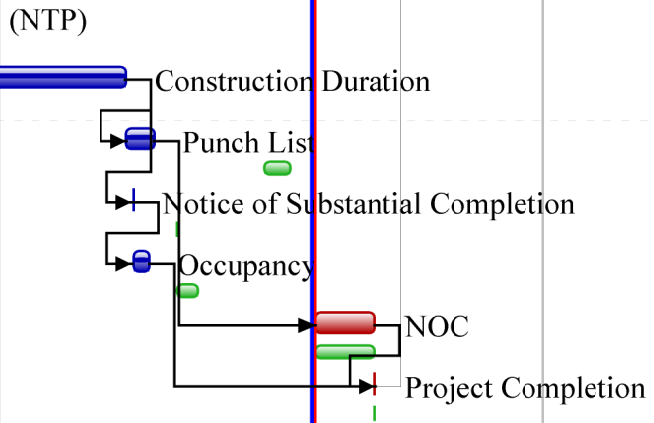


Please contact any of the following regarding questions or comments associated with this report:

Eitan Aharoni Director of Facilities
 Joe DeRosa Project Manager
 Kim Crews Administrative Assistant

661.336.5095 eaharoni@gafcon.com
 661.336.5022 jderosa@kccd.edu
 661.336.5174 kcrews@kccd.edu

WBS / Activity	Planned Duration	Remaining Duration	Duration % Complete	Start	Finish	2014												2015												2016											
						Jan	Feb	Mar	Apr	May	Jun	Jul	Aug	Sep	Oct	Nov	Dec	Jan	Feb	Mar	Apr	May	Jun	Jul	Aug	Sep	Oct	Nov	Dec	Jan	Feb	Mar	Apr	May	Jun	Jul	Aug	Sep	Oct	Nov	Dec
PC Student Center Reroof & HVAC Replace...	491	28	94.3%	18-Oct-12...	09-Sep-14																																				
PC Student Center Reroof & HVAC Replace...	83	28	66.3%	18-Oct-12...	08-Sep-14																																				
PPR/Budget Approval	37	0	100%	18-Oct-12...	04-Dec-12 A																																				
DSA Approval	0	0	100%	04-Mar-1...	04-Mar-13 A																																				
Bid Phase	15	0	100%	18-Mar-1...	03-Apr-13 A																																				
Bid Opening	0	0	100%	04-Apr-13...	04-Apr-13 A																																				
Board of Trustees Award	1	0	100%	02-May-1...	02-May-13 A																																				
Critical Submittals	7	0	100%	07-May-1...	14-May-13 A																																				
Construction Start Date (NTP)	0	0	100%	24-May-1...	24-May-13 A																																				
Construction Duration	114	0	100%	24-May-1...	26-Mar-14 A																																				
Punch List	10	0	100%	27-Mar-1...	14-Apr-14 A																																				
Notice of Substantial Completion	0	0	100%	31-Mar-1...	31-Mar-14 A																																				
Occupancy	10	0	100%	31-Mar-1...	11-Apr-14 A																																				
NOC	28	28	0%	31-Jul-14*	08-Sep-14																																				
Project Completion	0	0	0%	09-Sep-14	09-Sep-14																																				



WBS / Activity	Planned Duration	Remaining Duration	Duration % Complete	Start	Finish	... 2014												2015												2016															
						Mar	Apr	May	Jun	Jul	Aug	Sep	Oct	Nov	Dec	Jan	Feb	Mar	Apr	May	Jun	Jul	Aug	Sep	Oct	Nov	Dec	Jan	Feb	Mar	Apr	May	Jun	Jul	Aug	Sep	Oct	Nov	Dec	Jan	Feb	Mar	Apr	May	Jun
[-] PC Science Math Chiller, Boilers, Water He...	616	22	96.4%	20-Apr-12 A	01-Sep-14																																								
PC Science Math Chiller, Boilers, Water Heate...	363	22	93.9%	20-Apr-12 A	29-Aug-14																																								
PPR/Budget Approval	26	0	100%	20-Apr-12 A	25-May-12 A																																								
Bid Phase	48	0	100%	16-Oct-12 A	20-Dec-12 A																																								
◆ Construction Start Date (NTP)	0	0	100%	14-Jan-13 A	14-Jan-13 A																																								
Critical Submittals	86	0	100%	14-Jan-13 A	13-May-13 A																																								
Construction Duration	68	0	100%	13-May-13 A	28-Jul-14 A																																								
Punch List	33	8	75.8%	16-Aug-13 A	11-Aug-14																																								
Certificate of Substantial Completion	0	0	0%	12-Aug-14	12-Aug-14																																								
Occupancy	14	14	0%	12-Aug-14	29-Aug-14																																								
NOC	0	0	0%	01-Sep-14	01-Sep-14																																								
◆ Project Complete	0	0	0%	01-Sep-14	01-Sep-14																																								

WBS / Activity	Planned Duration	Remaining Duration	Duration % Complete	Start	Finish	... 2012												2013												2014											
						Fe	Ma	Apr	Ma	Jun	Jul	Aug	Sep	Oct	Nov	Dec	Jan	Feb	Mar	Apr	May	Jun	Jul	Aug	Sep	Oct	Nov	Dec	Jan	Feb	Mar	Apr	May	Jun	Jul	Aug	Sep	Oct	Nov	Dec	
PC Fire Lane & ADA Parking	695	25	96.4%	03-Jan-12...	03-Sep-14																																				
PC Fire Lane & ADA Parking LOE	487	25	94.9%	03-Jan-12 A	03-Sep-14																																				
PPR/Budget Approval	0	0	100%	03-Jan-12 A	03-Jan-12 A																																				
Engage Architect	0	0	100%	04-Jan-12 A	04-Jan-12 A																																				
Architectural Program	141	0	100%	05-Jan-12 A	27-Jun-12 A																																				
Bid Phase	16	0	100%	13-Mar-13 A	02-Apr-13 A																																				
Bid Opening	0	0	100%	04-Apr-13 A	04-Apr-13 A																																				
Board of Trustees Award	0	0	100%	02-May-13 A	02-May-13 A																																				
Construction Start Date NTP	0	0	100%	10-Jun-13 A	10-Jun-13 A																																				
Construction Duration	61	0	100%	03-Jun-13 A	19-Aug-13 A																																				
Punch List	5	0	100%	20-Aug-13 A	26-Mar-14 A																																				
Occupancy	5	0	100%	27-Mar-14 A	28-Mar-14 A																																				
NOC - As-Built and Close Out Docs	20	25	0%	31-Mar-14 A	03-Sep-14																																				
Project Completion	0	0	0%	03-Sep-14	03-Sep-14																																				