

ADDENDUM NO. 4

DATE: 1/29/2024

PROJECT:

Porterville College Sports Complex (PC Baseball/ Softball Field)
100 E College Ave,
Porterville, CA 93257

OWNER:

Kern Community College District
2100 Chester Ave
Bakersfield, CA 93301

ARCHITECT:

DARDEN ARCHITECTS, INC.
Attention: Robert Petithomme
6790 N. West Avenue
Fresno, California 93711
T. (559) 448-8051
F. (559) 446-1765

DARDEN PROJECT NO. 2118
DSA File Nos. 03-122694
DSA APPL. NO. 15-C1



It will be the responsibility of the General Contractor to submit the information contained in this addendum to all its subcontractors and suppliers. Acknowledge receipt of this Addendum in the space provided on the Bid Form. Failure to do so may subject Bidder to disqualification.

The following additions, deletions, and revisions to the SHEETS and Project Manual are hereby made and do become a part of these Contract Documents.

PROJECT: PC Baseball / Softball Field

ADDENDUM NO. 4 DATE:1/29/2024
PAGE 2

INDEX OF ADDENDA TRANSMITTED HEREWITH

PROJECT MANUAL:

BIDDING AND CONTRACT REQUIREMENTS:

CHANGES TO PRIOR ADDENDA AD4-CPA01 THRU AD4-CPA02

SPECIFICATIONS:

CHANGES TO SPECIFICATIONS AD4-SP01

SHEETS:

CHANGES TO SHEETS:

CIVIL AD4-C01 THRU AD4-C03
ARCHITECTURAL..... AD4-A01 THRU AD4- A03
PLUMBINGAD4-P01
DUGOUT STRUCTURES..... AD4-D01

ATTACHMENTS:

DOCUMENTS OR SPECIFICATIONS:

APPENDIX C, EXTERIOR COLOR SCHEDULE – AD4.....Page 1

SHEETS:

CIVILAD4/CX01 and AD4/CX03
ARCHITECTURALAD4-AX01
PLUMBINGAD4-PX01

PROJECT: PC Baseball / Softball Field

ADDENDUM NO. 4 **DATE:1/29/2024**
PAGE 3

PROJECT MANUAL:

BIDDING AND CONTRACT REQUIREMENTS:

CHANGES TO PRIOR ADDENDA:

AD4-CPA01 Refer to Addendum No.3 Item AD3-SP06:

1. Street improvements for the College Avenue Realignment Project by Cornerstone Engineering were included "FOR REFERENCE ONLY". This separate concurrent Project is a part of the ISR Application Approval. Bidders are only responsible for ISR requirements for the Porterville College Sports Complex Project, identified as Phase 1 in Table L-3 of the approved ISR Application, and as "Construction 2" in the ISR Project Phases, Emissions, and Fees Report.

AD4-CPA02 Refer to Addendum No.2 Item AD2-C17 and Attached Addenda Sheet AD4-CX02:

1. Replaces sheet SD/X601-AD2-CX17 with the attached sheet SD/X601-AD4-CX02
2. Detail reference on detail A has been revised
3. Note 7 on "Notes on Batting Cage" has been revised
4. Note 8 on "Notes on Batting Cage" has been revised

SPECIFICATIONS:

CHANGES TO SPECIFICATIONS:

AD4-SP01 Refer to APPENDIX C, EXTERIOR COLOR SCHEDULE:

1. Replace APPENDIX C EXTERIOR COLOR SCHEDULE with the attached EXTERIOR COLOR SCHEDULE-AD4

SHEETS:

CHANGES TO SHEETS:

CIVIL:

AD4-C01 Refer to Sheet SD/X101 and attached sheet AD4-CX01

1. Detail "I" has been removed.
2. Detail "J" has been removed

AD4-C02 Refer to Sheet SD/C101 and attached sheet AD4-CX03

1. Sheet AD4-CX03 clarifies existing fill identified in the Geotech Report to be address.

PROJECT: PC Baseball / Softball Field

ADDENDUM NO. 4 DATE:1/29/2024
PAGE 4

AD4-C03 Refer to Sheet SD/C501 and addenda drawing AD2-CX03

1. Clarification: the deductive alternate No. 4 is only for the fill to bring the area between the fields to grade. It is the area that is outlined with a dashed, thick black line and which currently looks like a shallow basin.

ARCHITECTURAL:

AD4-A01 Refer to Sheet X/A101, Interior Finish Schedule:

1. At rooms 101,102,103,104,105,106,107 and 108 change Concrete Masonry Units, Finish, to CB-4

AD4-A02 Refer to Sheet X/A101, Exterior Finish Schedule:

1. At "BUILDINGS", change Concrete Masonry Units, Finish to CB-2
2. At "BUILDINGS", change Steel and Fabrications, Columns, Beams, Lintels, Building Canopies, and Sunshades, Finish, to EM-3
3. At "BUILDINGS", change Metal Deck, Deck, Cover Plates, Closure Strips, and all Misc Items, Finish, to EM-3
4. At "BUILDINGS", change Sheet Metal, Architectural, Finish, to EM-3

AD4-A03 Refer to Sheet A/A201 and Attached Addenda Drawing AD4-AX01:

1. Replace Sheet A/A201 with the attached drawing AD4AX01

PLUMBING:

AD4-P01 Refer to Sheet A/P101 and attached addenda drawing AD4-PX01:

1. Replace sheet A/P101 with the attached sheet AD4-PX01.

DUGOUT STRUCTURES:

AD4-D01 Refer to Sheets SFPC-1, SFPC-2, SFPC-3, SFPC-4, SFPC-5

1. Refer to Specification Section 051200 STEEL AND FABRICATION, This section does not apply to the Pre-Approved dugouts. Refer to the Pre-Approved Dugout Drawings for finishing of Structural Steel.

END OF ADDENDUM NO.

Project: Porterville College Sports Complex
 Client: Kern Community College District
 Location: Porterville, CA

Darden Project #2118

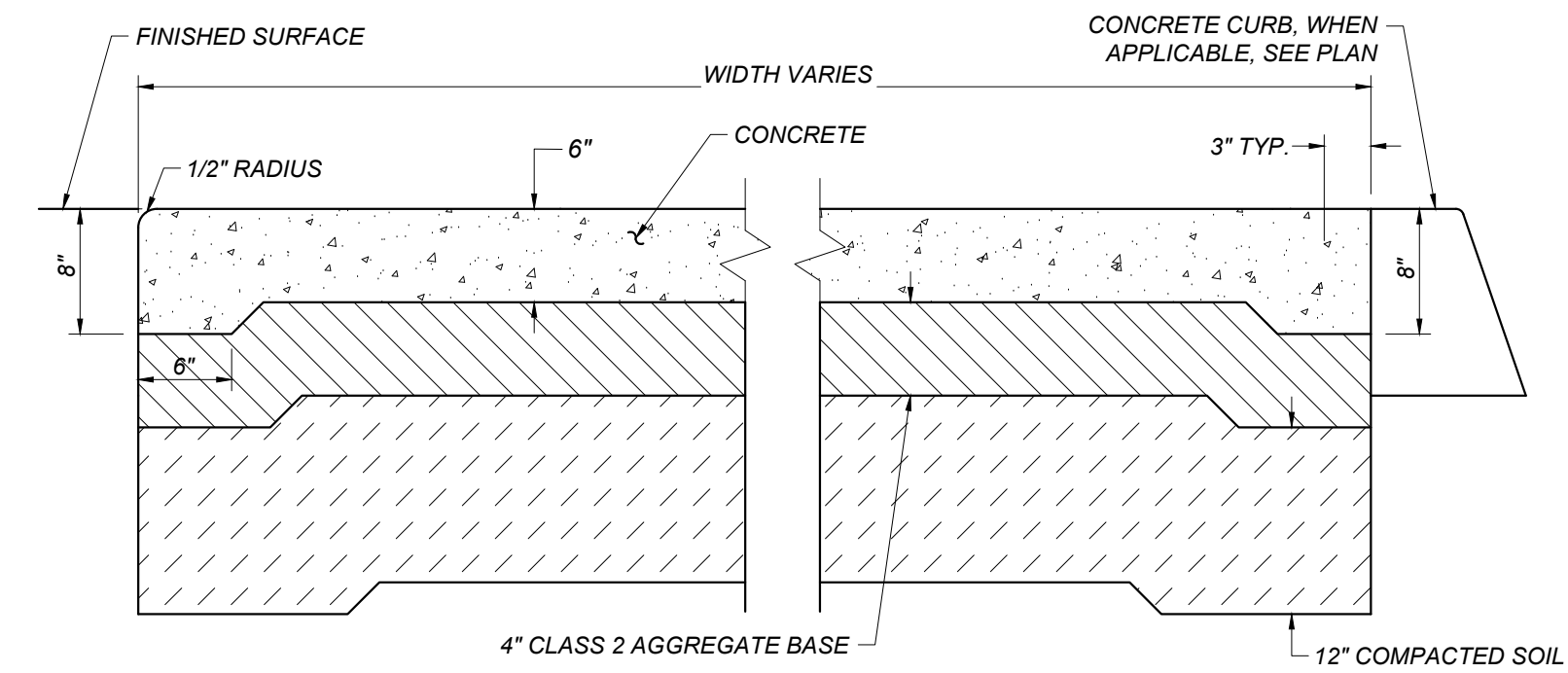
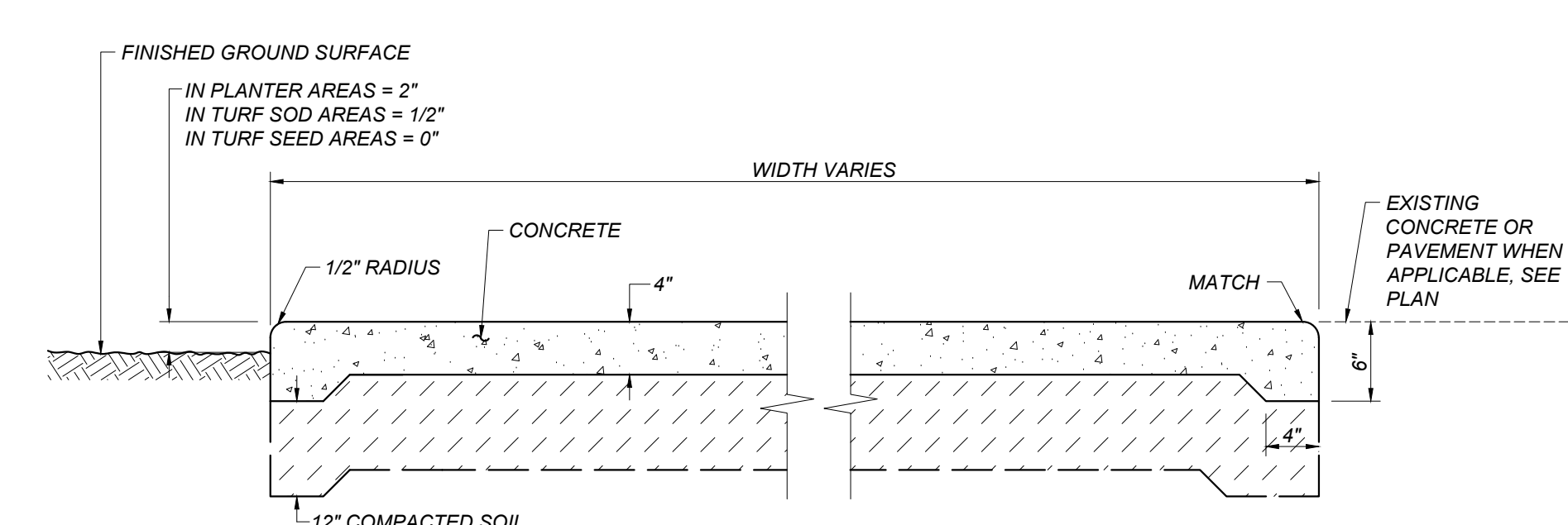
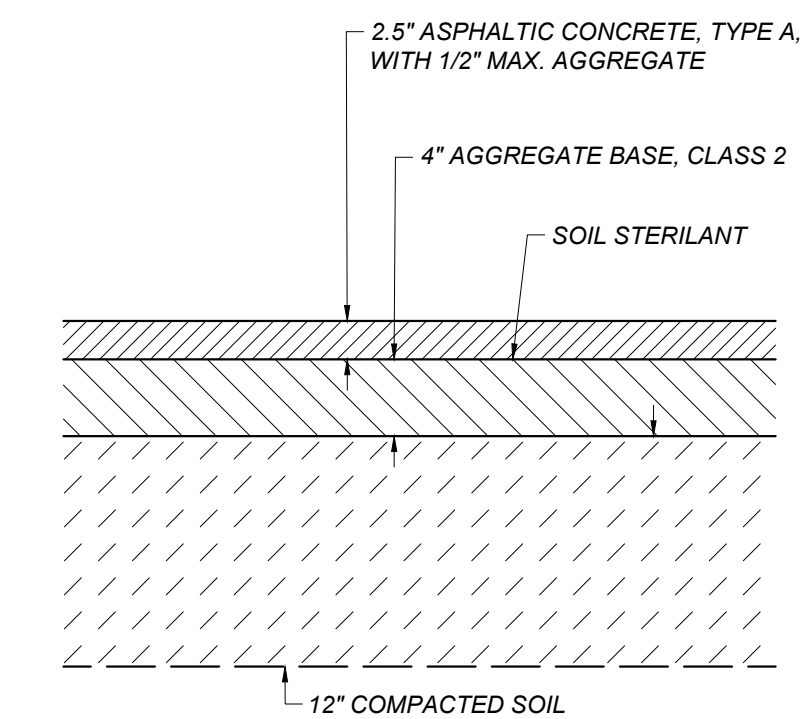
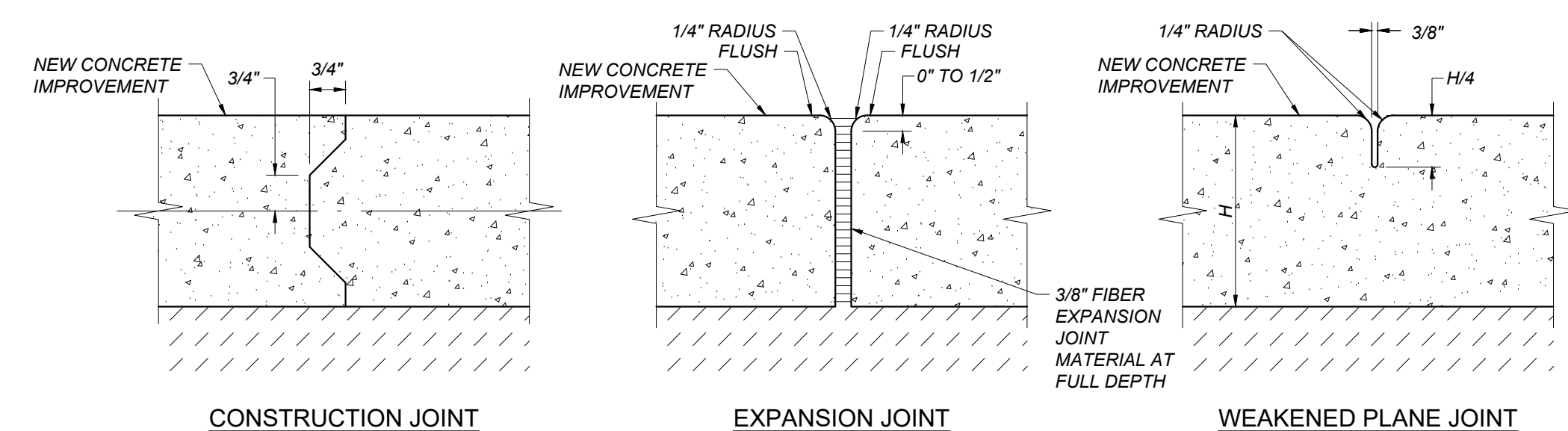
APPENDIX "C": EXTERIOR COLOR SCHEDULE AD-4

<u>MATERIAL</u>	<u>MANUFACTURER</u>	<u>REF #</u>	<u>DESCRIPTION</u>
CONCRETE MASONRY			
Concrete Masonry Units			
CB-1	Basalite	-	Natural Grey
CB-2			
PAINT			
Concrete Masonry Units			
BC-1	PPG		Match Campus Van De Cane
Steel and Fabrications			
Cutters/Downspouts:	PPG	-	Match to adjacent Finish.
MC-2	PPG	-	Match Campus Van De Cane
Exposed Structural Steel:	PPG	-	Match to adjacent Finish.
MC-1	PPG	-	Match Campus Deep Red
Sheet Metal			
Parapet caps:	PPG	-	Match to adjacent Finish.
MC-1	PPG	-	Match Campus Deep Red
Metal Doors / Frames			
Metal Doors: MC-3	PPG	-	Match Campus: Cornico Beige
Metal Frames: MC-3	PPG	-	Match Campus: Cornico Beige
Metal Deck MC-1	PPG	-	Match Campus Deep Red
Louvers	PPG	-	Match to adjacent Finish.
Ornamental Metal			
MC-2	PPG	-	Color to be Determined.



GENERAL NOTES:

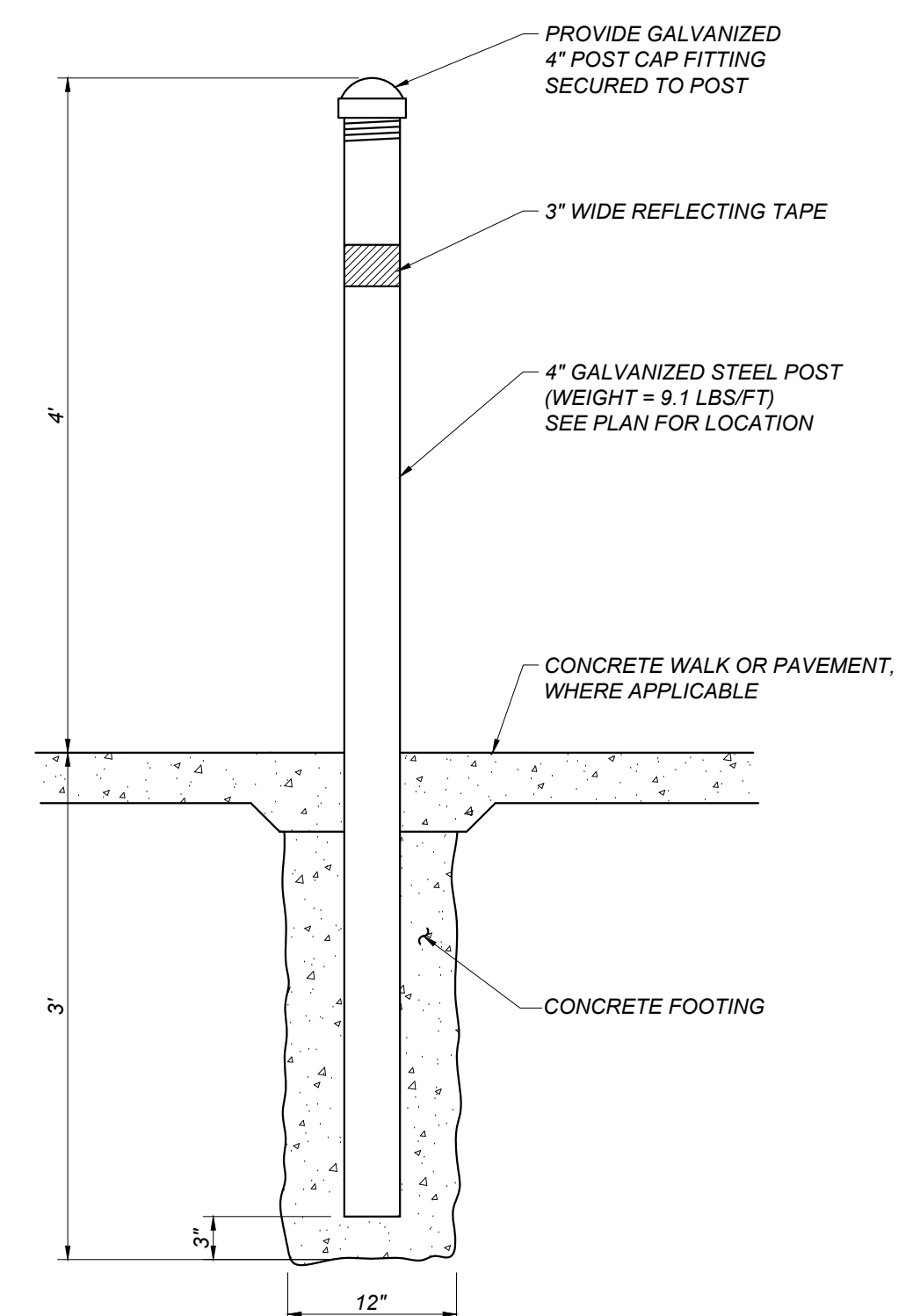
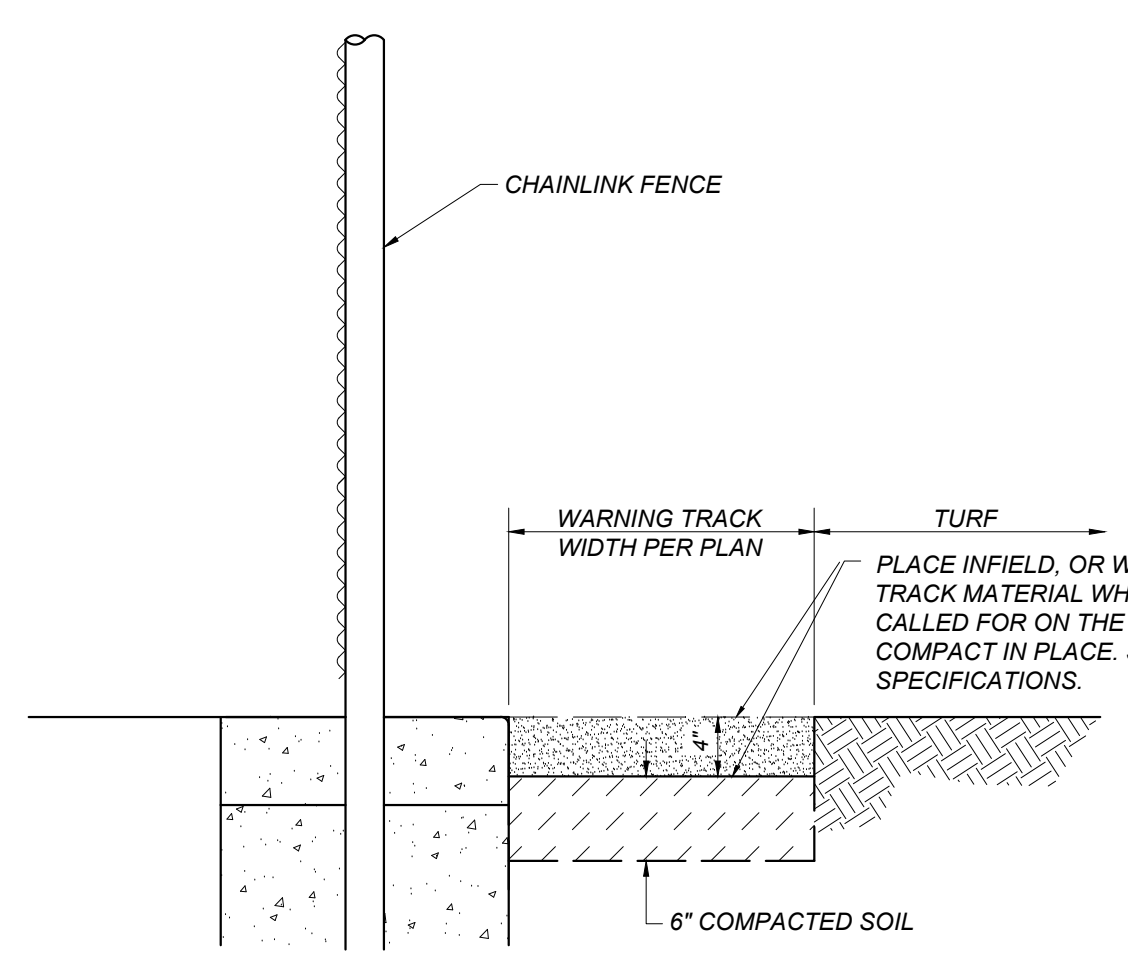
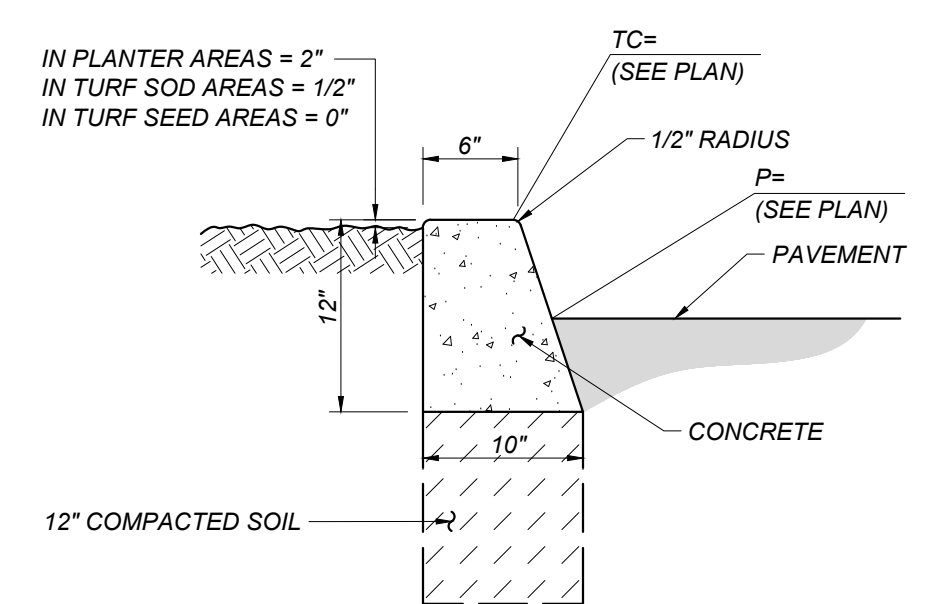
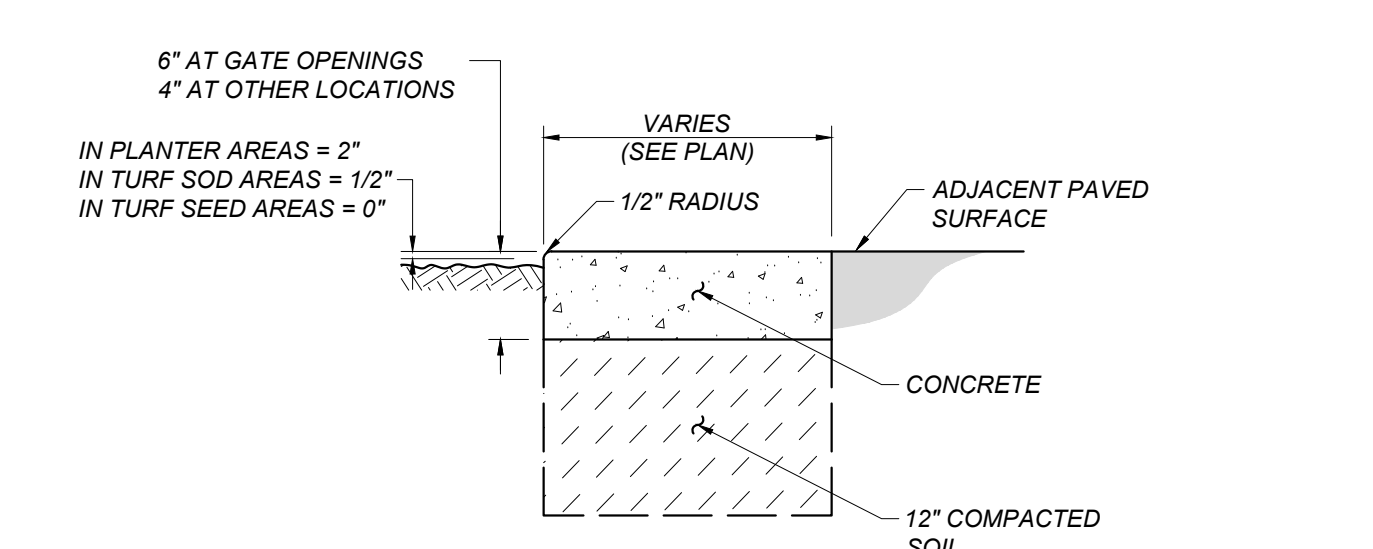
1. Paint colors listed on Exterior Color Schedule are for color reference only. Refer to Architectural Specifications and Finish Schedules for type.
2. Change of color is to occur at control joints or an inside corner, unless otherwise noted.
3. Mechanical grille/louvers with factory baked enamel finish shall match primary color of adjacent hollow metal door frame. Louvers located in doors shall match door color.
4. All miscellaneous visual architectural sheet metal and steel fabrications including, but not limited to, mechanical/ plumbing/ electrical equipment shall match color of adjacent material, unless otherwise noted.
5. Soffits shall match color of outer face wall, unless otherwise noted.
6. ~~Parapet caps shall match color of adjacent cement plaster.~~
7. Louvers shall match color of adjacent finish.



A ASPHALT CONCRETE PAVEMENT STRUCTURAL SECTIONS
SD/X101 NOT TO SCALE

B REGULAR DUTY CONCRETE
SD/X101 NOT TO SCALE

C HEAVY DUTY CONCRETE
SD/X101 NOT TO SCALE

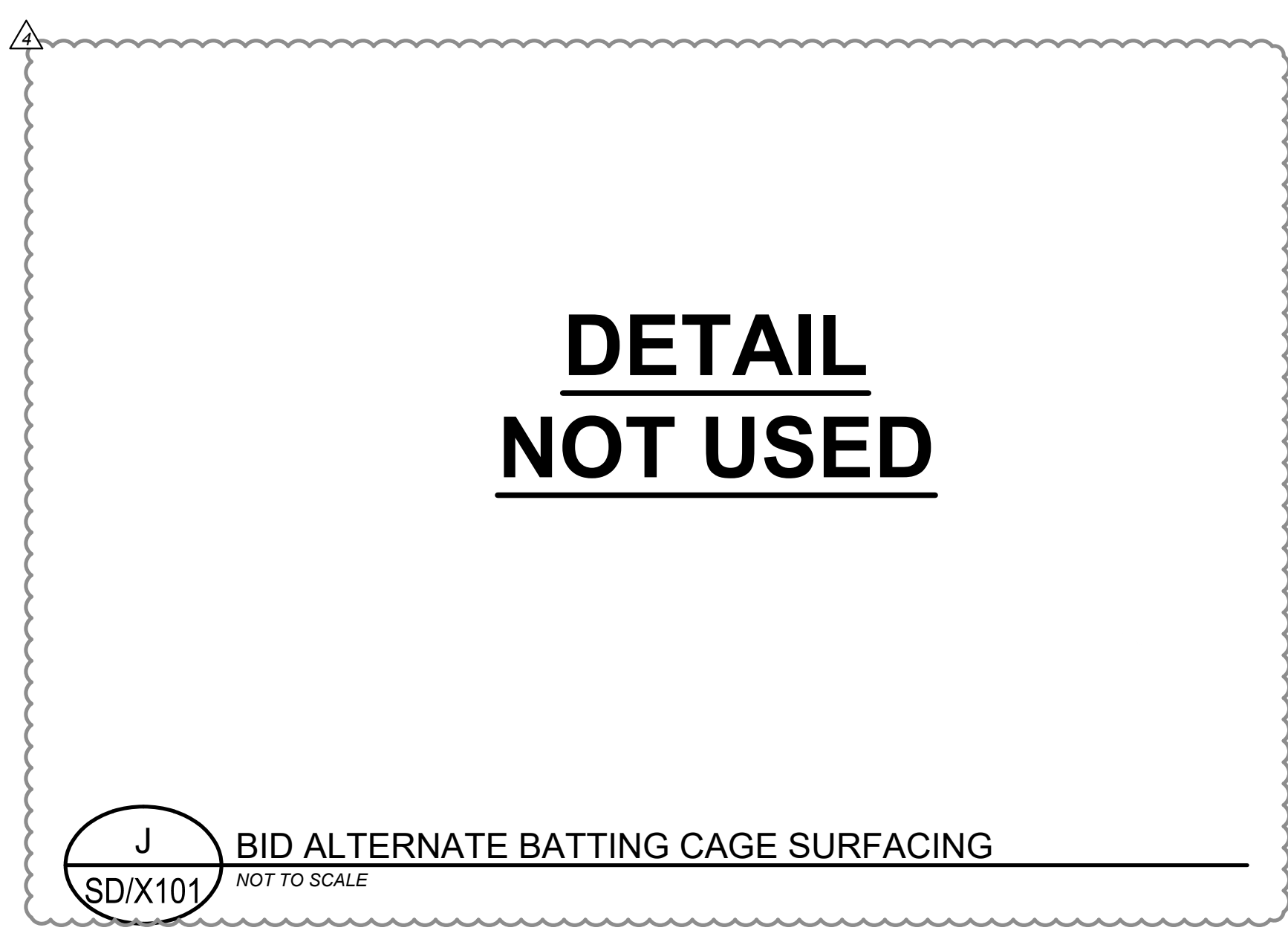
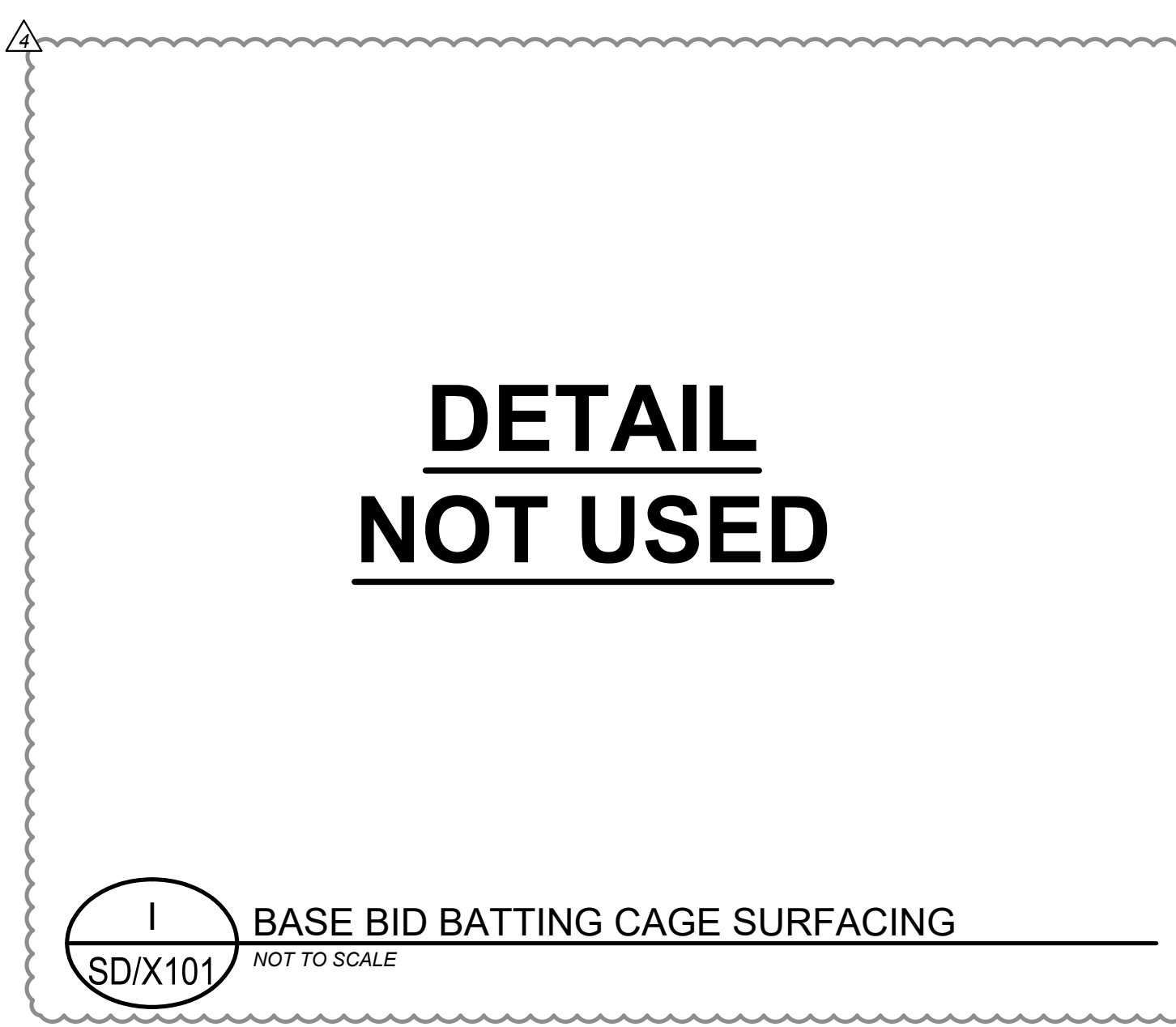
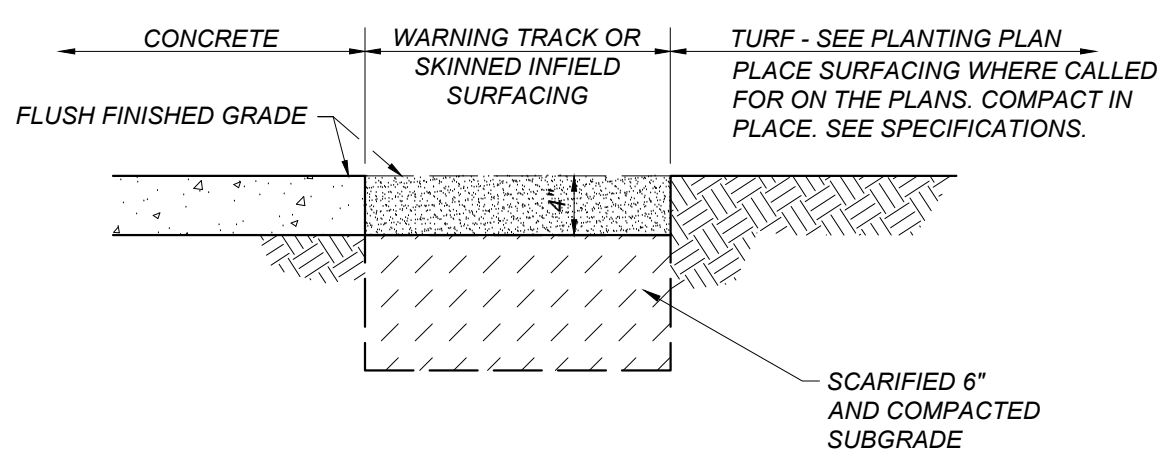


D CONCRETE MOWSTRIP
SD/X101 NOT TO SCALE

E CONCRETE CURB
SD/X101 NOT TO SCALE

F TYPICAL SECTION AT WARNING TRACK SURFACING
SD/X101 NOT TO SCALE

G FIXED PROTECTION POST
SD/X101 NOT TO SCALE



H SKINNED INFIELD/ WARNING TRACK
SD/X101 NOT TO SCALE

I BASE BID BATTING CAGE SURFACING
SD/X101 NOT TO SCALE

J BID ALTERNATE BATTING CAGE SURFACING
SD/X101 NOT TO SCALE

DSA File No.: 15-C1
DSA Application No.: 03-122694
Agency Approval

Blair, Church & Flynn
CONSULTING ENGINEERS
Blair, Church & Flynn Consulting Engineers
461 Clovis Avenue, Suite 200
Clovis, California 93612
Tel (559) 326-1400 Fax (559) 326-1500

Professional Engineer Seal: D. J. Flynn, No. 51218, State of California, Civil, Exp. 07/2023.

Consultant

PORTERVILLE COLLEGE ATHLETIC COMPLEX
PHASE I
100 E COLLEGE AVE.
PORTERVILLE, CA 93257
Project

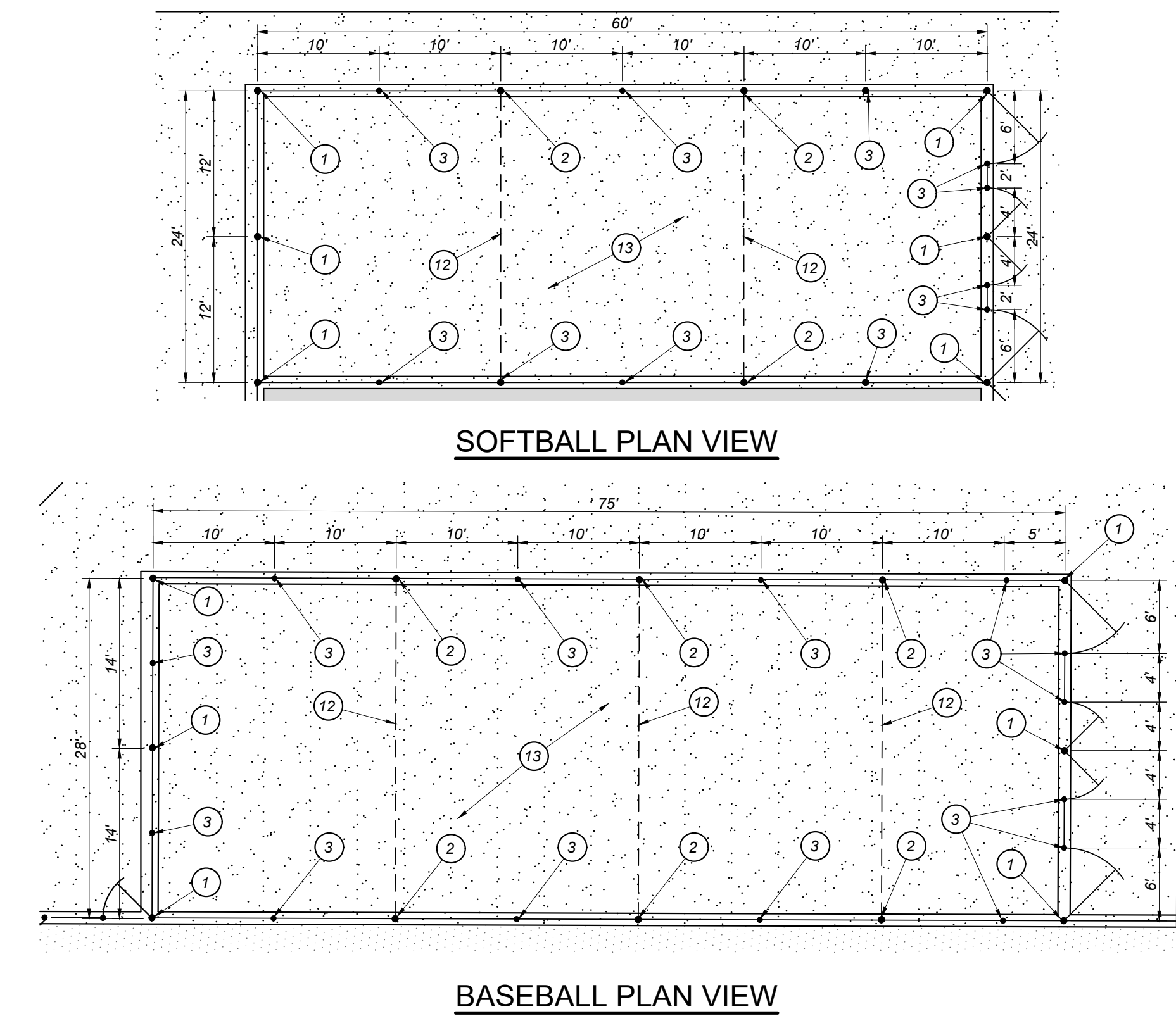
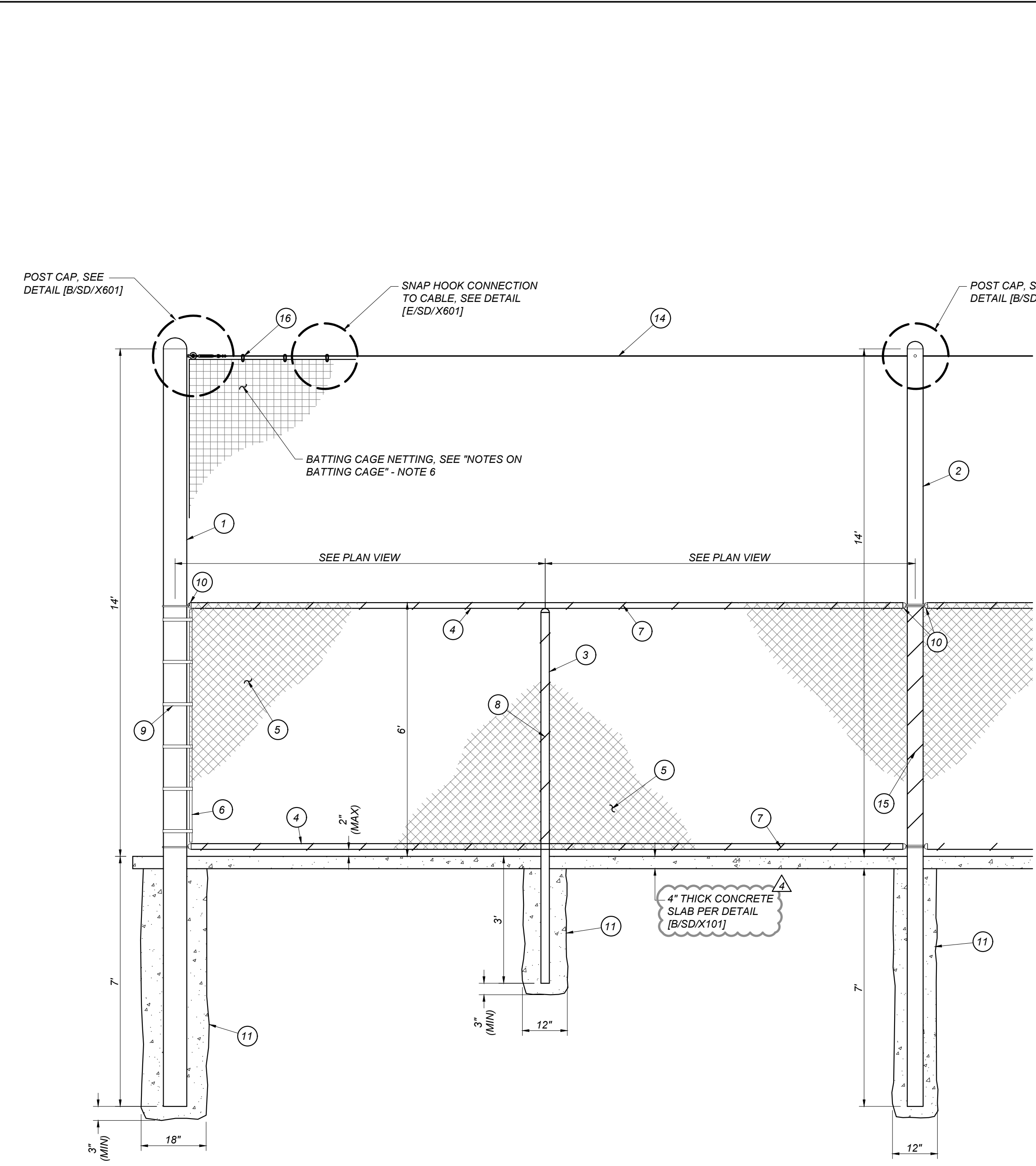
SITE DETAILS
Drawing

darden architects
ARCHITECTURE PLANNING INTERIORS
www.dardenarchitects.com
6790 N. West Ave. • Fresno, CA 93711 • T. 559.448.8051
Architect

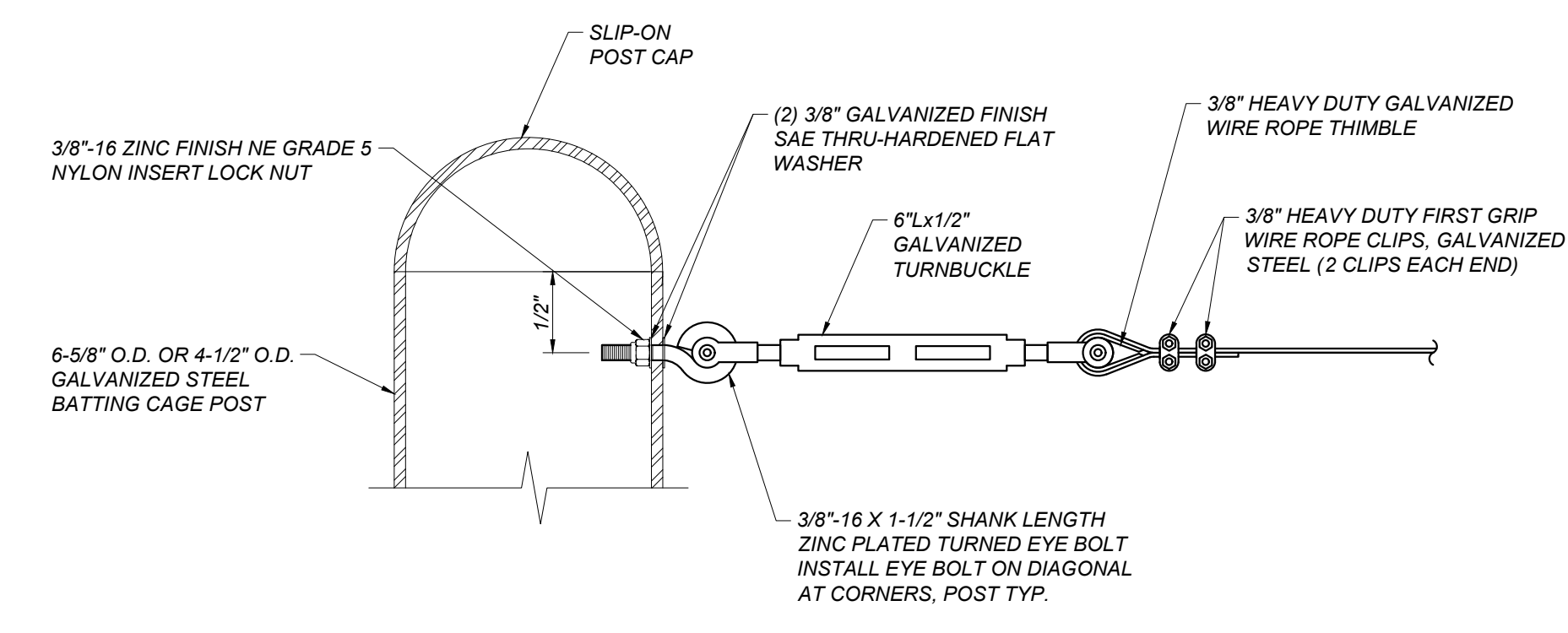
Professional Architect Seal: D. J. Flynn, No. L15908, State of California, Exp. 11-30-2024.

No.	Revision/Submission	Date
▲	ADDENDUM 02	01/11/2024
▲	ADDENDUM 03	01/17/2024
▲	ADDENDUM 04	01/24/2024

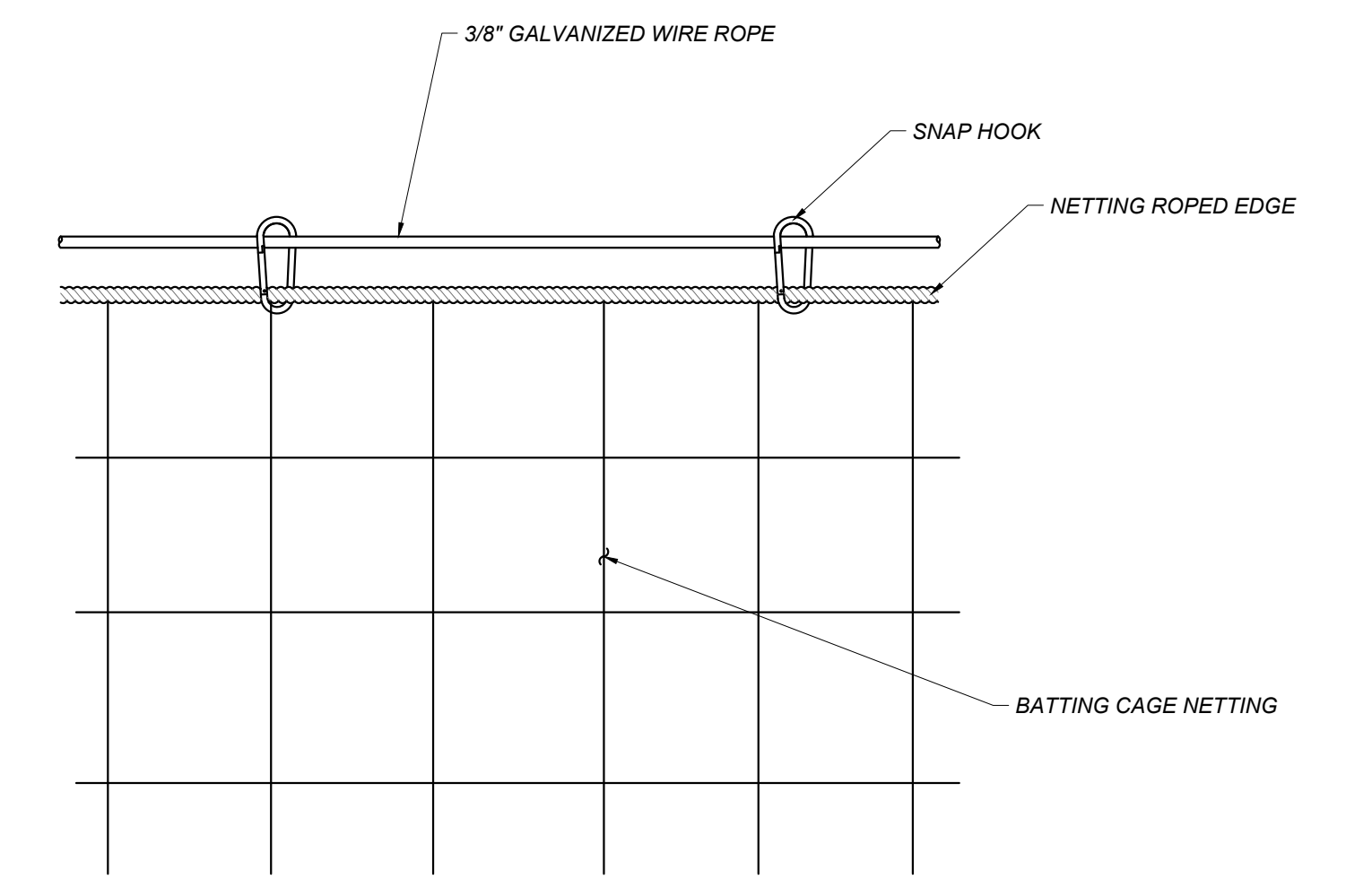
Revision		
No.	Revision/Submission	Date
	Designed By: ZH	Copyright 2024 Darden Architects
Scale: AS NOTED	Drawn By: AH	SD/X101 AD4-CX01
Project Number: 2118	Checked By: JF	
Date: 12/28/2023	Reviewed By: ZH	



- BATTING CAGE LEGEND**
- 1 6-5/8" O.D. GALVANIZED STEEL NET CORNER POST (18.99 LB/FT)
 - 2 4-1/2" O.D. GALVANIZED STEEL NET LINE POST (10.79 LB/FT)
 - 3 2-3/8" O.D. GALVANIZED STEEL LINE POST (3.65 LB/FT)
 - 4 1-5/8" O.D. GALVANIZED STEEL HORIZONTAL RAIL (2.27 LB/FT)
 - 5 2" x 2" MESH x 9 GAUGE GALVANIZED FENCE FABRIC WITH KNUCKLED TOP AND BOTTOM SELVAGE. FENCE FABRIC TO BE GALVANIZED BEFORE WEAVING (GBW).
 - 6 1/4" x 3/4" GALVANIZED STEEL STRETCHER BAR
 - 7 9 GAUGE (0.148" DIA) GALVANIZED STEEL TIE WIRES OR HOG RINGS AT 15" MAXIMUM SPACING. MINIMUM OF 8 TIE WIRES PER EACH 10' HORIZONTAL RAIL OR TENSION WIRE.
 - 8 6 GAUGE (0.192" DIA) GALVANIZED STEEL POST CLIPS AT 14" MAXIMUM SPACING. MINIMUM 5 POST CLIPS FOR EACH 6' POST.
 - 9 1/8" THICK GALVANIZED STEEL STRETCHER BAR TENSION BAND AT 12" MAXIMUM SPACING. MINIMUM OF 6 TENSION BANDS FOR EACH 6' POST SECTION AND 12 TENSION BANDS FOR EACH 12' POST SECTION.
 - 10 GALVANIZED RAIL ENDS.
 - 11 CONCRETE FOOTING, TYPICAL.
 - 12 TRANSVERSE CROSS CABLES TO BE PROVIDED UNDERNEATH LONGITUDINAL CABLES. SEE NOTE 5.
 - 13 BATTING CAGE SURFACING. SEE NOTES 7 & 8.
 - 14 3/8" GALVANIZED WIRE ROPE WITH GALVANIZED WIRE ROPE CLIPS. POST TO POST, ALL DIRECTIONS. PROVIDE GALVANIZED TURN BUCKLE FOR CABLE TENSIONING AT EACH CABLE RUN (2 MINIMUM RUNS AND TURNBUCKLE)
 - 15 9 GAUGE (0.148") GALVANIZED STEEL TIE WIRES AT 15" MAXIMUM SPACING
 - 16 2-3/4" 1000LB MINIMUM BREAK STRENGTH SNAP HOOK. 24" MINIMUM SPACING BETWEEN SNAPHOOKS
- NOTES ON BATTING CAGE**
1. ALL AREAS AFFECTED BY WELDING, TRIMMED ENDS OF BOLTS, STRETCHER BARS, OR ANY EXPOSED STEEL SHALL BE PAINTED (GALVANIZED) PER CONTRACT SPECIFICATIONS.
 2. PROVIDE GATE HOLDBACK FOR EACH GATE. LOCATE HOLDBACK IN FENCE MOWSTRIP UNLESS OTHERWISE NOTED.
 3. SEE SITE AND DIMENSION PLAN FOR THE FOLLOWING:
 - DIMENSIONAL LAYOUT OF CHAIN LINK FENCING AND GATES
 - GATE WIDTHS
 - LOCATIONS AND DETAILS OF ACCESSIBLE GATE HARDWARE AND STEEL PLATES
 4. INSTALL EYE BOLTS ON THE INSIDE OF NET LINE POSTS.
 5. WHERE BATTING CAGES ARE SIDE-TO-SIDE, PROVIDE CROSS CABLES TRANSVERSE UNDERNEATH THE CENTER LONGITUDINAL CABLE.
 6. BATTING CAGE PROVIDED BY CONTRACTOR AND INSTALLED PER MANUFACTURER'S RECOMMENDATIONS - SEE SPECIFICATIONS.
 7. IF THE SYNTHETIC TURF BID ALTERNATE IS ACCEPTED, CONCRETE SLAB SHALL BE LINED WITH BEACON ATHLETICS 36 OZ POLYPROPYLENE URETHANE BACKING TO MATCH BATTING CAGE DIMENSION, OR APPROVED EQUAL.
 8. IF THE SYNTHETIC TURF BID ALTERNATE IS REJECTED, REFER TO DETAIL (B/SDX101) FOR BASE BID BATTING CAGE SURFACING.

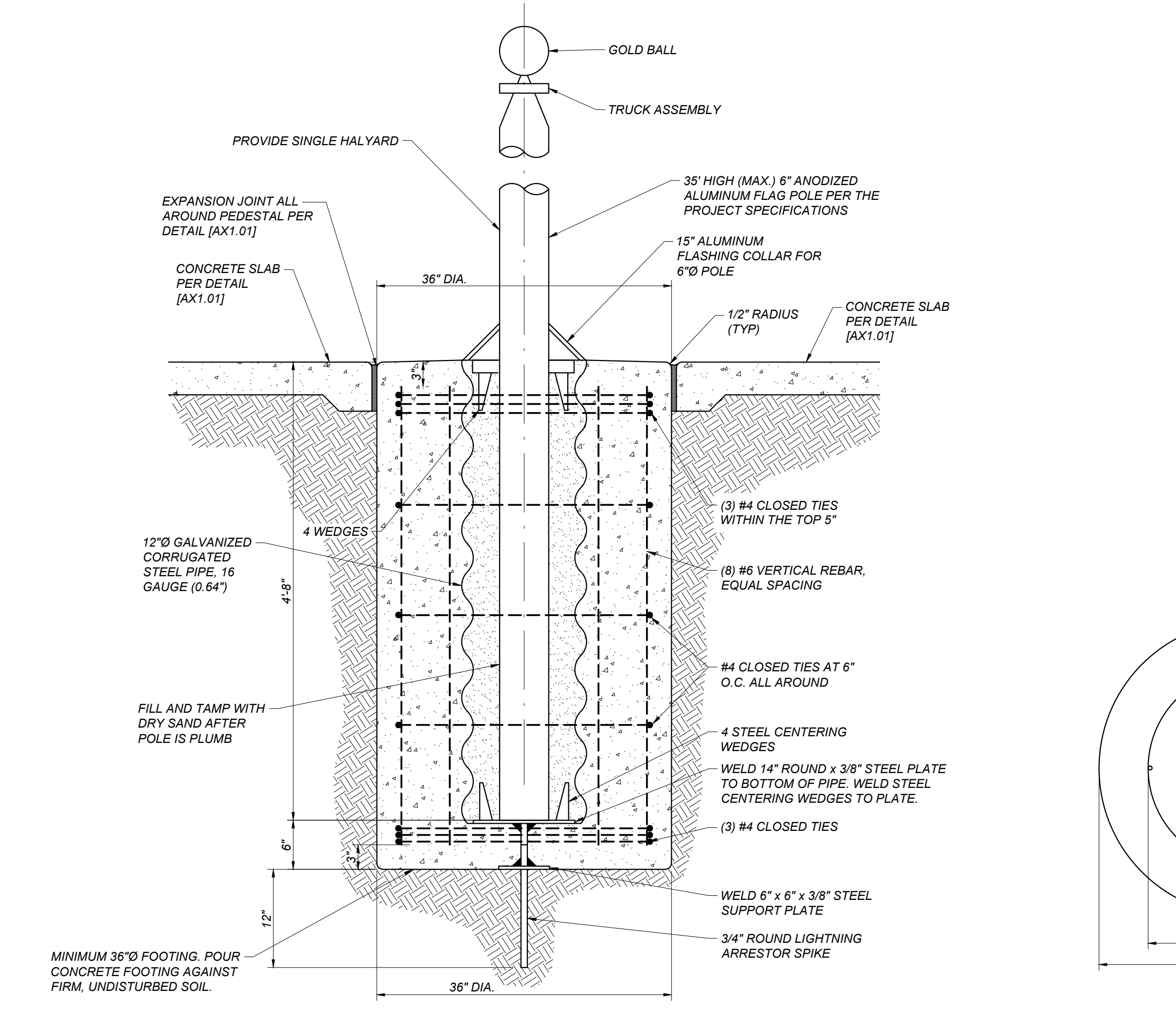


B WIRE EYE BOLT
SD/X601 NOT TO SCALE



E SNAP HOOK CONNECTION TO CABLE
SD/X601 NOT TO SCALE

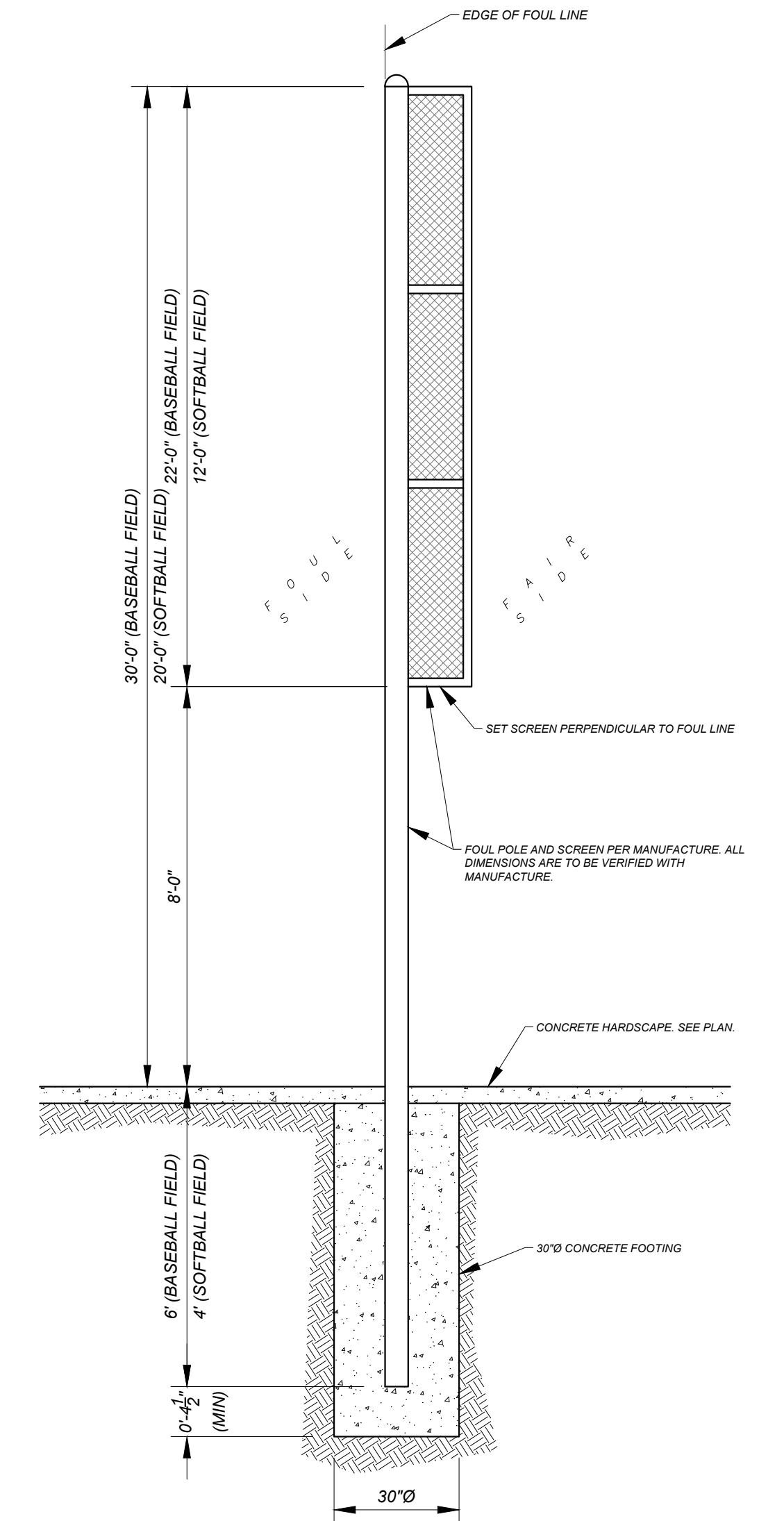
A BATTING CAGE SOFTBALL AND BASEBALL
SD/X601 NOTE: THIS DETAIL IS EXEMPT FROM DSA REVIEW PER DSA IR-A22 APPENDIX ITEM 23 AND IS NOT PART OF THIS DSA APPROVAL



C FLAG POLE DETAIL
SD/X601 NOTE: THIS DETAIL IS EXEMPT FROM DSA REVIEW PER DSA IR-A22 APPENDIX ITEM 1 AND IS NOT PART OF THIS DSA APPROVAL



D FOUL LINE POLE
SD/X601 NOTE: THIS DETAIL IS EXEMPT FROM DSA REVIEW PER DSA IR-A22 APPENDIX ITEM 1 AND IS NOT PART OF THIS DSA APPROVAL



DSA File No.: 15-C1
DSA Application No.: 03-122694
Agency Approval

Blair, Church & Flynn
CONSULTING ENGINEERS
Blair, Church & Flynn Consulting Engineers
461 Clovis Avenue, Suite 200
Clovis, California 93612
Tel (559) 326-1400 Fax (559) 326-1500

Professional Engineer Seal: Blair, Church & Flynn, State of California, No. 51218, Exp. 5/1/25

PORTERVILLE COLLEGE ATHLETIC COMPLEX
PHASE I
100 E COLLEGE AVE.
PORTERVILLE, CA 93257

BALLFIELD DETAILS

Darden Architects
ARCHITECTURE PLANNING INTERIORS
www.dardenarchitects.com
6790 N. West Ave. • Fresno, CA 93711 • T. 559.448.8051

Professional Architect Seal: Darden Architects, State of California, No. 11-20-18, Exp. 11-20-25

No.	Revision/Submission	Date
ADDENDUM 02		01/11/2024
ADDENDUM 03		01/17/2024
ADDENDUM 04		01/24/2024

Revision		
Designed By:	Checked By:	Date
ZH	JF	12/28/2023

Copyright © 2024 Darden Architects

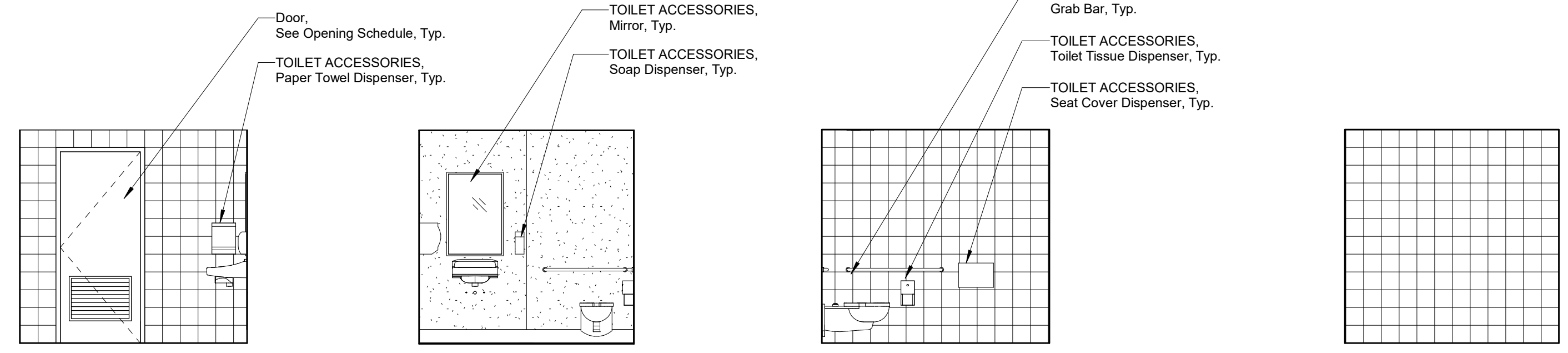
Scale: AS NOTED Drawn By: AH

Project Number: 2118

Date: 12/28/2023

Reviewed By: ZH

SD/X601
AD4-CX02

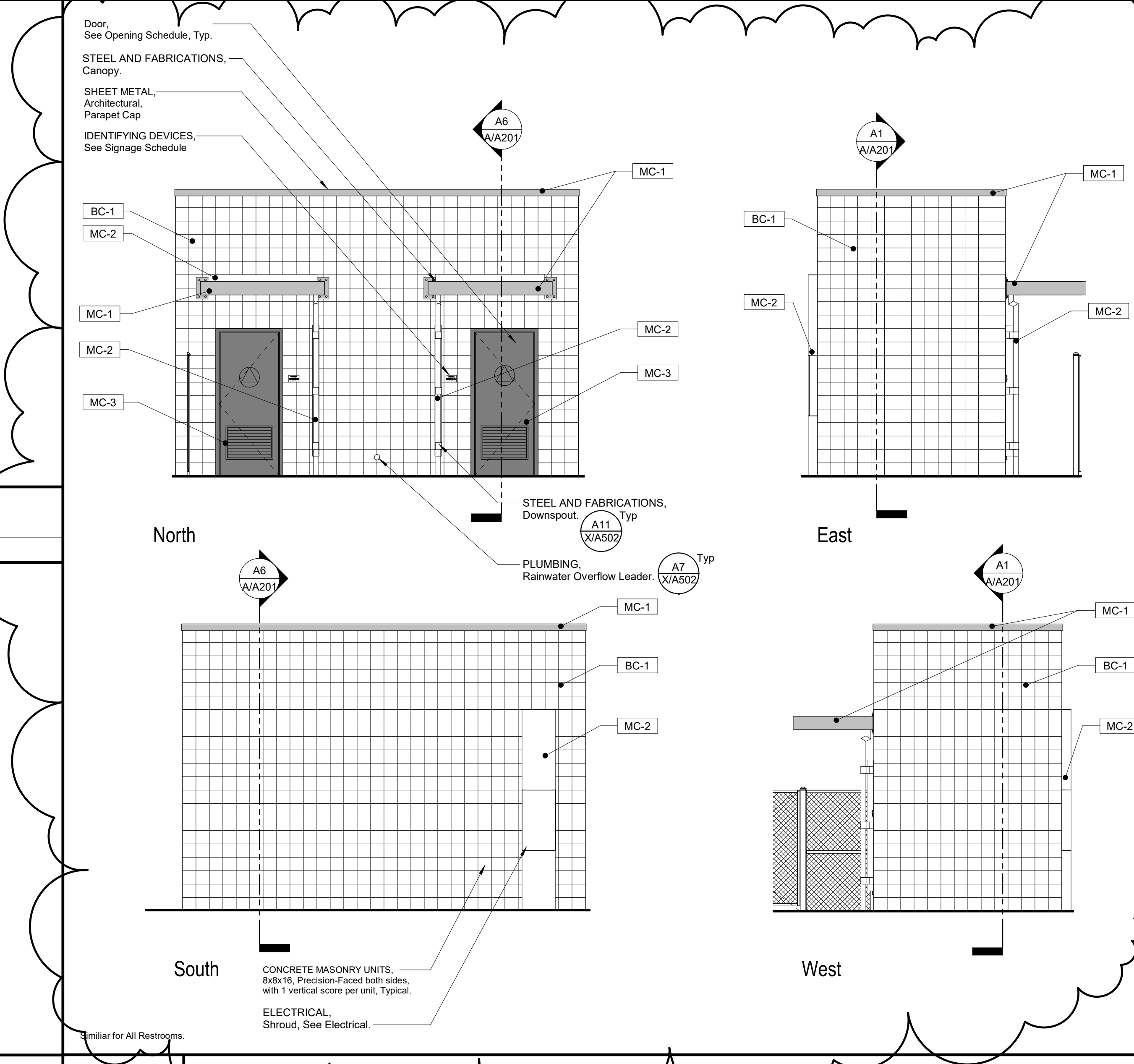


101 Unisex Restrm
 Room Elevations shown are typical for Building A. Room Elevation orientation varies per Building

N1 Interior Elevations
 Similar for All Restrooms

<p>SYMBOLS</p> <p> Cabinet Group No. Refer to Modular Casework Schedule and Lab Casework Schedule.</p> <p> Equipment Item No. Refer to Equipment Schedule.</p> <p> FIRE PROTECTION SPECIALTIES: Fire Extinguisher Cabinet, Top of Cabinet @ +5'-0", Unless Noted Otherwise. Provide Fire Rated Cabinet at Rated Walls.</p> <p> ELECTRICAL: Outlet, Light Switch, Fire Alarm Device, Volume Control, Television Outlet, Thermostat, Hose Bib, Data Outlet, Microphone Outlet, Intrusion Sensor, Motion Sensor, Telephone Outlet.</p>	<p>ABBREVIATIONS</p> <p>GI Glass KS Knee Space OH Opposite Hand Typ. Typical Sim. Similar Dia. Diameter UNO Unless Noted Otherwise</p>	<p>NOTES</p> <ol style="list-style-type: none"> All Details, Materials and Finishes shall be considered typical for all similar conditions Unless Noted Otherwise. Refer to Plumbing, Mechanical, Telecommunications, Food Service, and Electrical for all wall mounted devices and coordinate location and heights with Architectural (i.e. casework, equipment, etc.) Locate and mount TOILET ACCESSORIES and PLUMBING per detail Unless Noted Otherwise. Provide backing at all TOILET ACCESSORIES, TOILET PARTITIONS, and IDENTIFYING DEVICES per detail Unless Noted Otherwise. Provide Backing for TOILET ACCESSORIES, Grab Bars per detail Unless Noted Otherwise. Locate and mount IDENTIFYING DEVICES per detail Unless Noted Otherwise.
--	---	--

J1 Interior Elevation Legend
 No Scale



J11 Exterior Elevations
 Refer to F18 for Legend Symbols, Abbreviations and Notes

DSA File No.: 15-C1
 DSA Application No.: 03/122694
 Agency Approval

EXTERIOR COLOR LEGEND

Block Colors

Match to Existing Block on Campus Unless Noted Otherwise

All Precision Block to be BC-1, UNO. Concrete Masonry Units below +0'-0" Shall Be BC-1, UNO.

Metal Colors

PAINT, Color 1, Unless Noted Otherwise

PAINT, Color 2, Unless Noted Otherwise

PAINT, Color 3, Unless Noted Otherwise

All Steel and Fabrications MC-1, UNO. All METAL DECKING to be MC-1, UNO.

Door Colors

Door and Frames to be MC-3

Color Notes

- XXX Color Designation.
- Parapet caps to match color of wall below. UNO.
- Soffits to match color of outer face wall. UNO.
- Horizontal soffits adjacent to fascia board shall be PC-1.

Fascia Board
 PC-1

Outer Face Wall
 Soffit
 Inner Face Wall

SYMBOLS

ELECTRICAL, Horn
 ELECTRICAL, Speaker
 ELECTRICAL, Outlet
 ELECTRICAL, Light Fixture, +10'-0" B.O. Fixture UNO

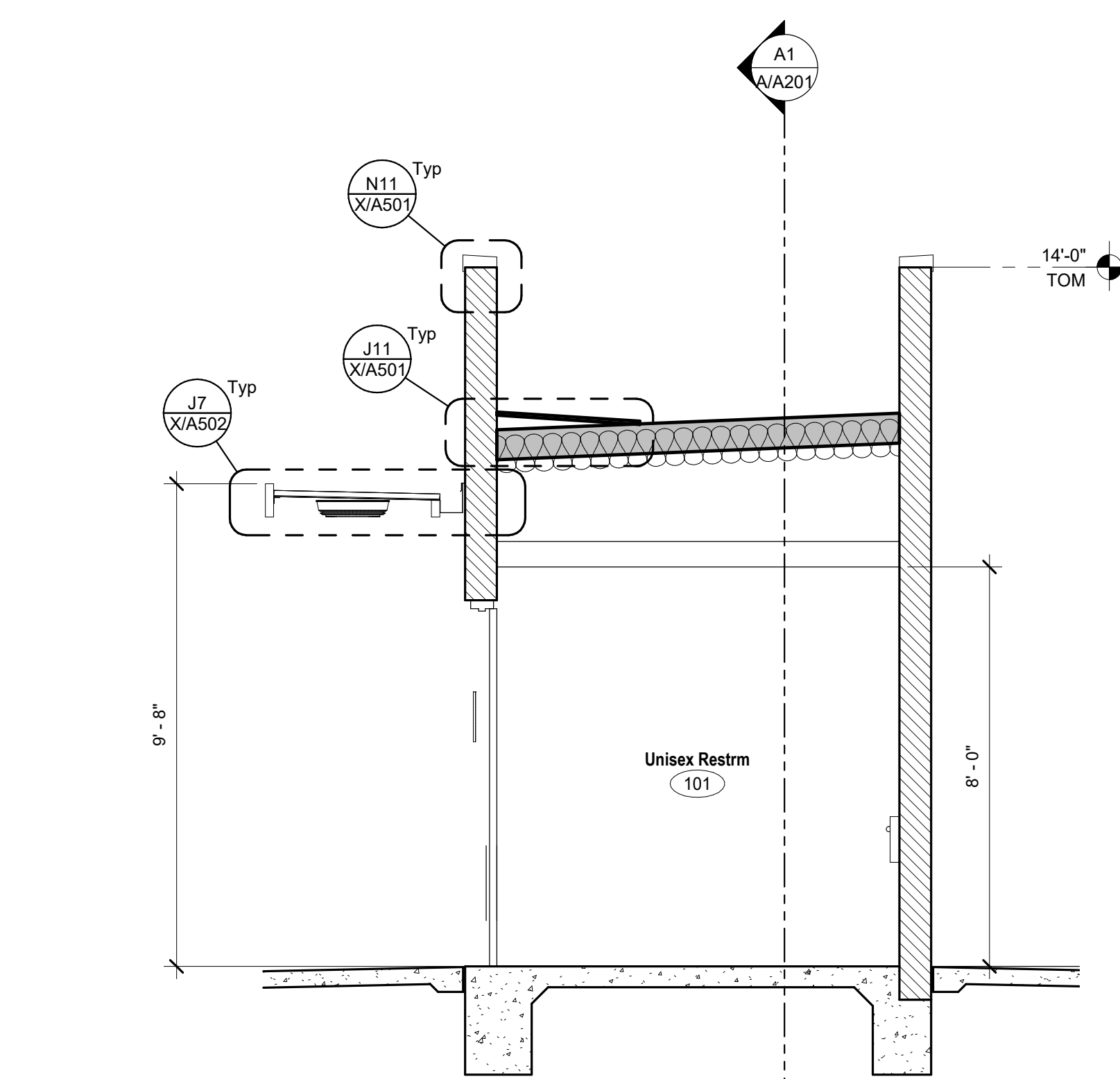
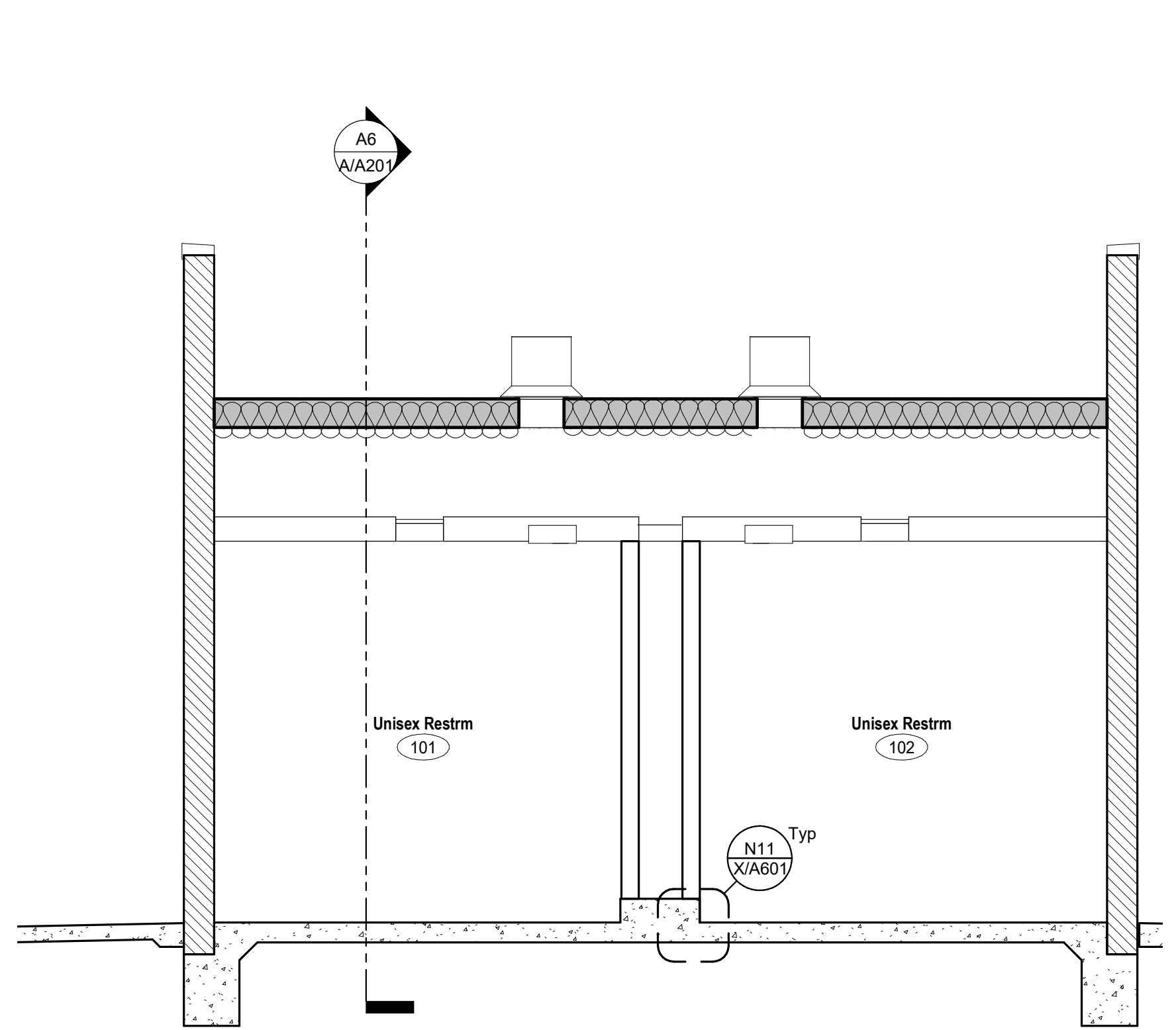
ABBREVIATIONS

AFF Above Finished Floor
 BO Bottom of
 CJ Control Joint
 DS Downspout
 EJ Expansion Joint
 HB PLUMBING, Hose Bib.
 OD PLUMBING, Overflow Drain, Refer to Detail
 OH Opposite Hand
 Sim. Similar
 TO Top of
 TOM Top of Masonry
 TOP Top of Parapet Framing
 TOF Top of Framing
 TOR Top of Roof
 TOS Top of Steel
 TPL Top of Plate
 Typ. Typical
 UNO Unless Noted Otherwise

NOTES

- PLUMBING, Rain Water Leader Overflow, Refer to See Plumbing Drawings for Location.
- Refer to Specifications Section Appendix "C" Exterior Color Schedule.
- Refer to Exterior Finish Schedule on Sheet XA201.

F18 Exterior Elevations Legend
 No Scale



A1 Section 1
 3/8" = 1'-0"

A6 Section 2
 3/8" = 1'-0"

Porterville College Sports Complex
 Kern Community College District
 Porterville, CA 93257

BUILDING A
 INTERIOR AND EXTERIOR ELEVATIONS

Darden Architects
 ARCHITECTURE
 PLANNING
 INTERIORS
 www.dardenarchitects.com
 6790 N. West Ave. • Fresno, CA 93211 • T. 559.448.8051

Architect

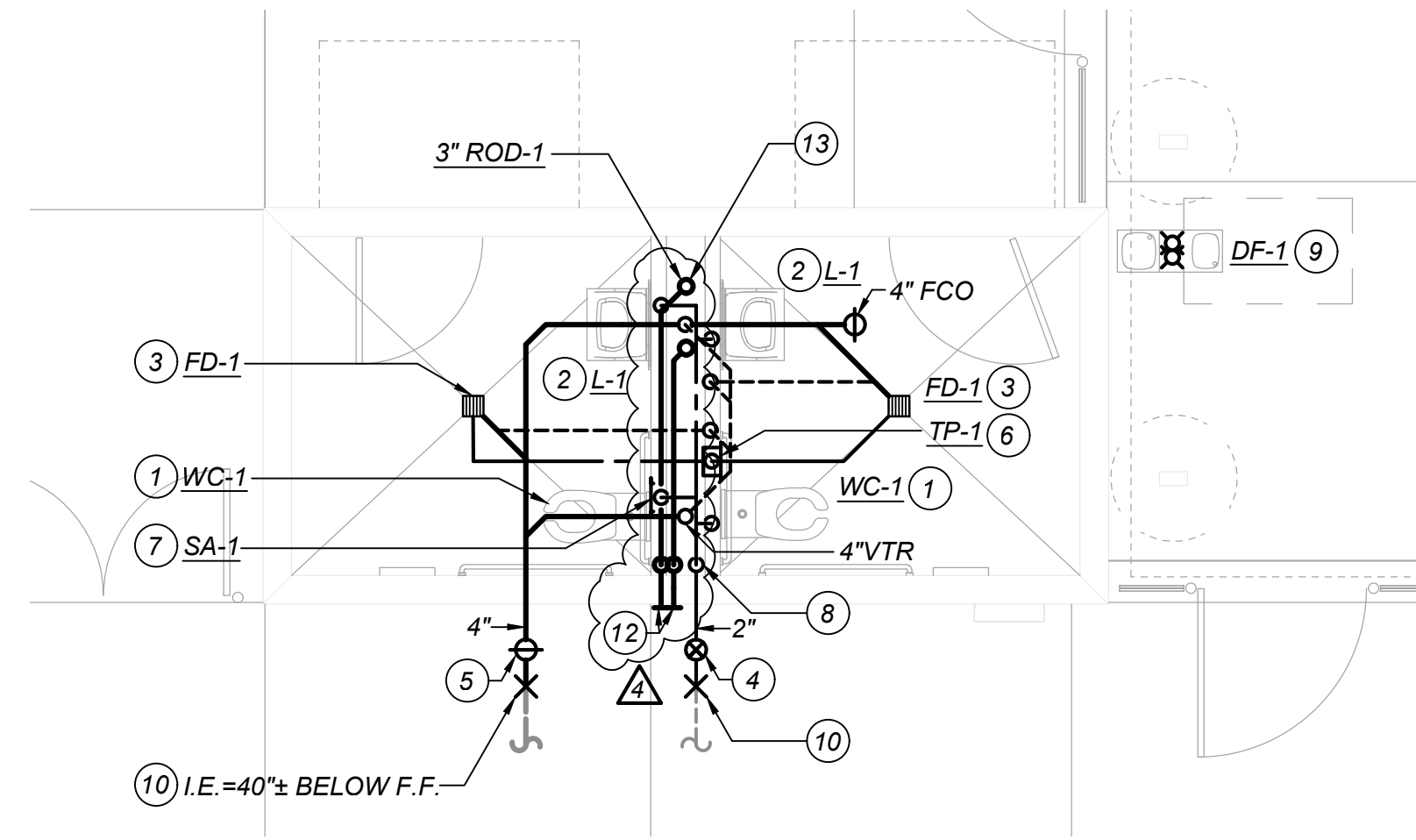
No.	Revision/Submission	Date
4	Addenda No. 4	1/24/2024

Revision

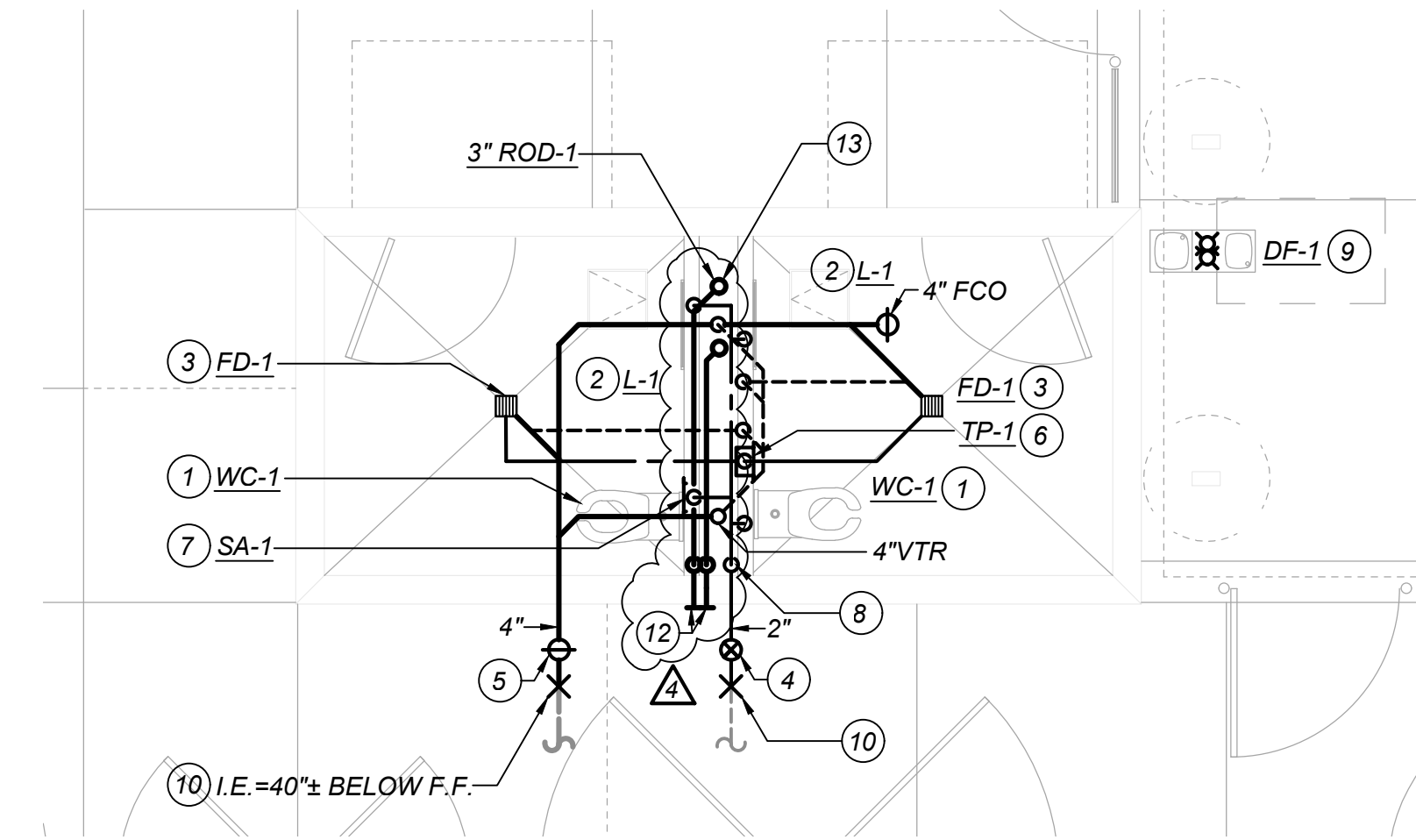
Scale: As indicated	Designed Designer: Author	Copyright © 2022 Darden Architects
Project Number: 2118	Checked/Checker:	
Date: 08/10/2023	Review/Approver:	

Sheet: **A/A201** of **AD4-AX01**

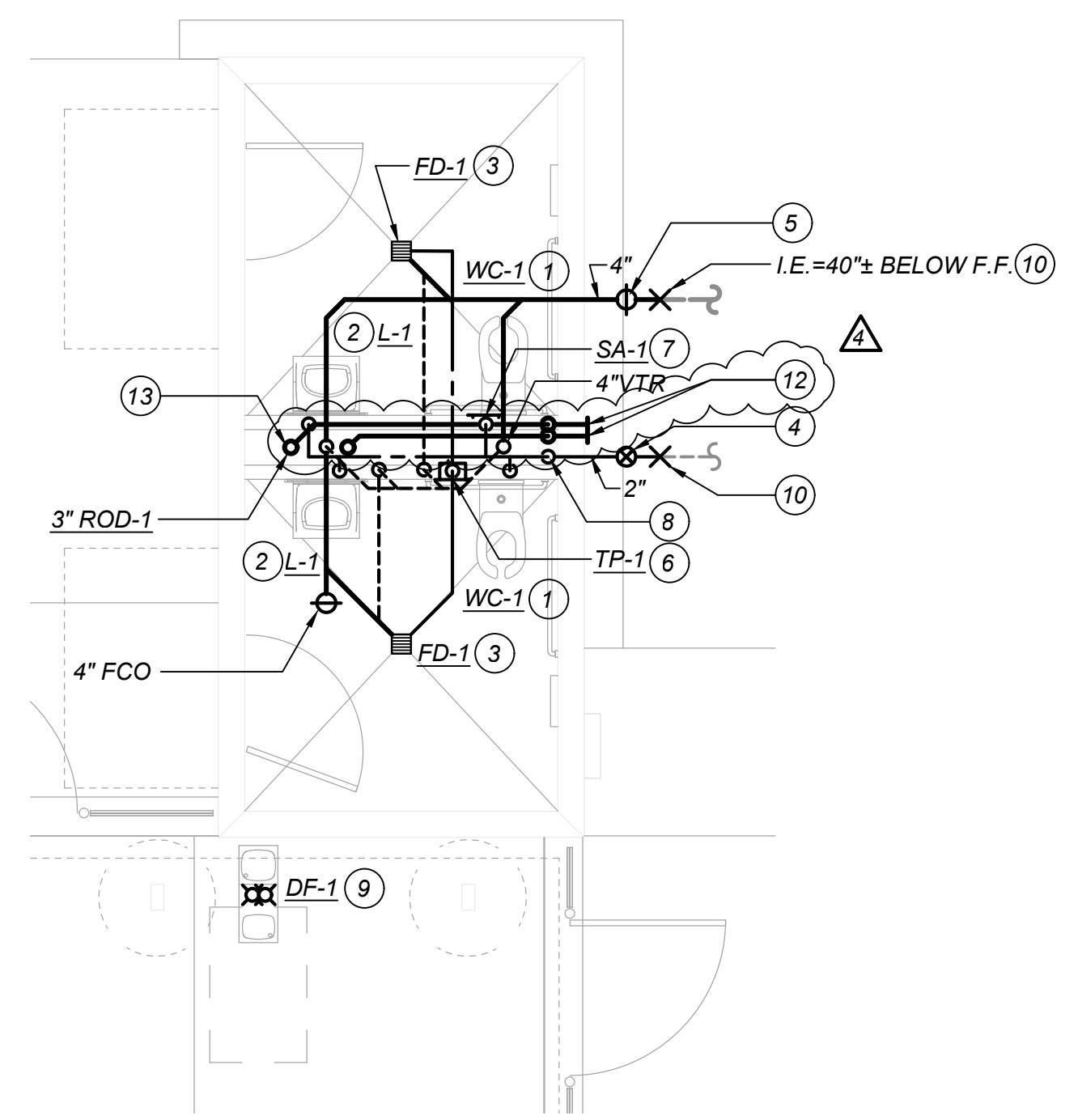
1/22/2024 9:44:20 AM C:\Users\cbpp\Documents\2118 Porterville Sports Complex_Phase1_V20_BobPelthommes3847.rvt



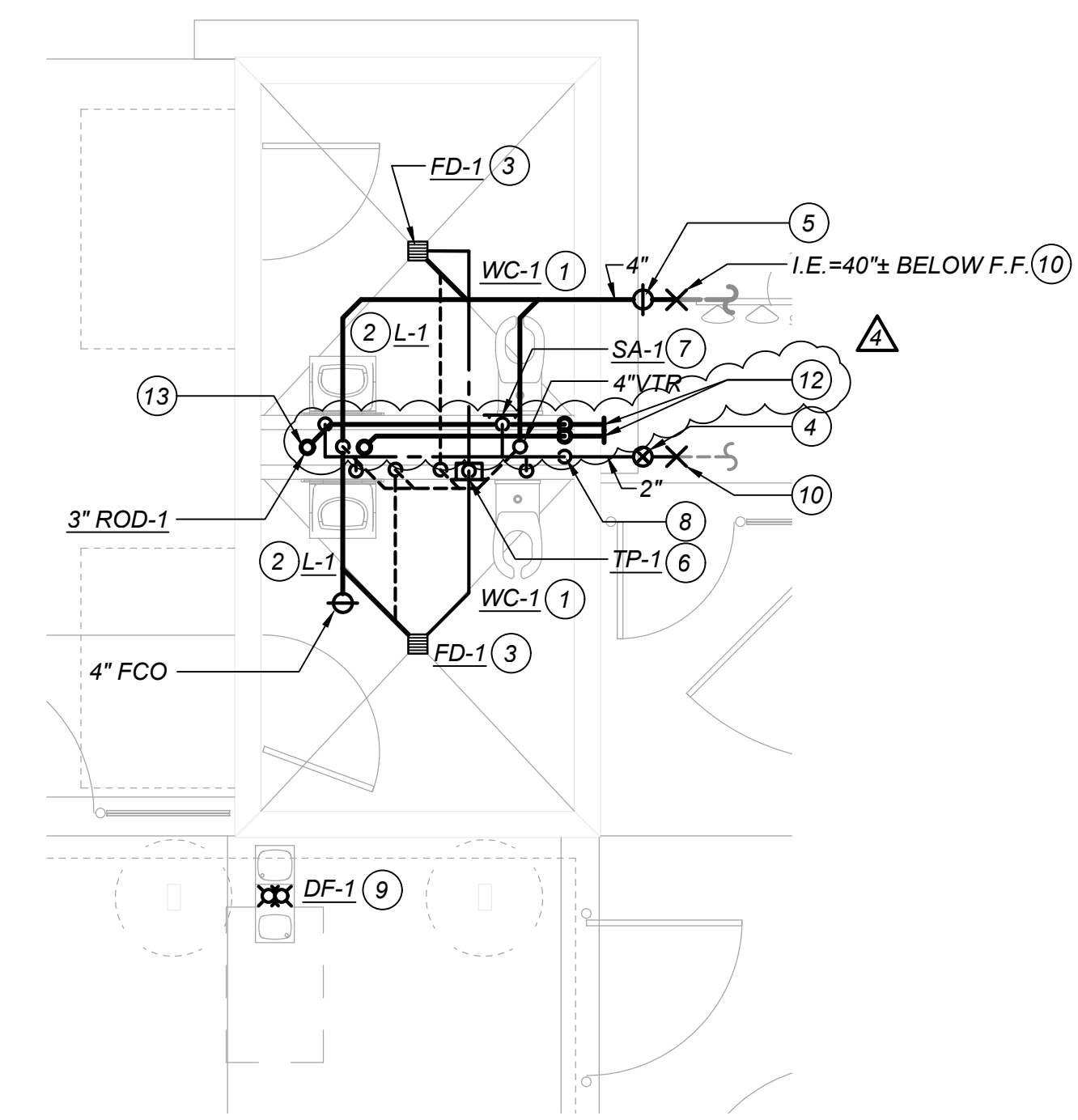
J1 Building C Plumbing Plan
1/4" = 1'-0"



J10 Building A Plumbing Plan
1/4" = 1'-0"



A1 Building D Plumbing Plan
1/4" = 1'-0"



A10 Building B Plumbing Plan
1/4" = 1'-0"

- KEYNOTES: (THIS SHEET ONLY)**
- 1 4" S, 2" V, AND 1-1/2" CW FOR WALL-MOUNTED WATER CLOSET.
 - 2 2" W WITH WCO, 1-1/2" V, AND 1/2" CW FOR LAVATORY.
 - 3 2" W, 1-1/2" V, AND 1/2" CW FROM TRAP PRIMER FOR FLOOR DRAIN.
 - 4 SOV IN BOX BELOW GRADE. REFER TO DETAIL A/X/P101.
 - 5 4" 2-WAY COTG. REFER TO DETAIL D/X/P101.
 - 6 1/2" CW DOWN TO TRAP PRIMER.
 - 7 INSTALL SHOCK ABSORBER IN WALL BEHIND ACCESS PANEL.
 - 8 2" CW RISE FROM BELOW GRADE UP TO 2" CW HEADER IN PLUMBING CHASE.
 - 9 CONNECT DRINKING FOUNTAIN TO 1-1/2" WASTE AND 1" CW. REFER TO CIVIL DETAILS A & B ON SHEET SD/X202.
 - 10 CONNECT TO SITE PIPING. REFER TO CIVIL DRAWINGS FOR CONTINUATION.
 - 11 COTG. REFER TO DETAIL B/X/P101.
 - 12 3" RWL DAYLIGHT THRU SIDEWALL AT 12" ABOVE FINISHED GRADE. 3" OD DAYLIGHT THRU SIDEWALL AT 24" ABOVE GRADE. REFER TO ARCHITECTURAL DETAIL A7/X502.
 - 13 3" RWL AND 3" OD OFFSET IN PLUMBING WALL.

General Notes

LAWRENCE ENGINEERING GROUP
 7584 N. Maple Ave., Suite 101, Fresno, CA 93720
 (509) 431-0101 Fax: (509) 431-1983

Consultant

Porterville College Sports Complex
 Kern Community College District
 Porterville, CA 93257

Project

BUILDINGS A, B, C, & D
 PLUMBING PLANS

Drawing

arden architects ARCHITECTURE PLANNING INTERIORS
 www.ardenarchitects.com
 6790 N. West Ave. • Fresno, CA 93711 • T. 559-448-8051

Architect

No.	Revision/Submission	Date
Δ	ADDENDUM 4	01-26-2024

Revision

Designed By: PX Copyright 2022 Darden Architects

Scale: AS NOTED Drawn By: LEG

Project Number: 2118 Checked By: PX

Date: 09/07/2021 Reviewed By: RC

A/P101
AD4-PX01

26 January 2024 9:20 AM P:\2024\2024 Porterville College Athletic Fields\4-Drawings\5 P\A-P101 - BUILDING A,B,C,D ENLARGED PLUMBING.gxd gpatano