

Addendum No. 03

March 8, 2024



PORTERVILLE COLLEGE FINE ARTS DARK ROOM

OWNER: KERN COMMUNITY COLLEGE DISTRICT
2100 Chester Avenue
Bakersfield, CA 93301

PREPARED BY: PBK Architects, Inc.
4900 California Avenue, Suite 130-A
Bakersfield, CA 93309

PBK PROJECT NO.: S2102800AR
DSA FILE NO.: 15-C1
DSA APPLICATION NO.: 02-121796

NOTICE TO BIDDERS

- A. Receipt of this Addendum shall be acknowledged on the Proposal Form.
- B. This Addendum forms part of the Contract Documents for the above referenced project and shall be incorporated integrally therewith.
- C. Each proposer shall make necessary adjustments and submit their proposal with full knowledge of all modifications, clarifications, and supplemental data included therein. Where provisions of the following supplemental data differ from those of the original Contract Documents, this Addendum shall govern.

DRAWINGS:

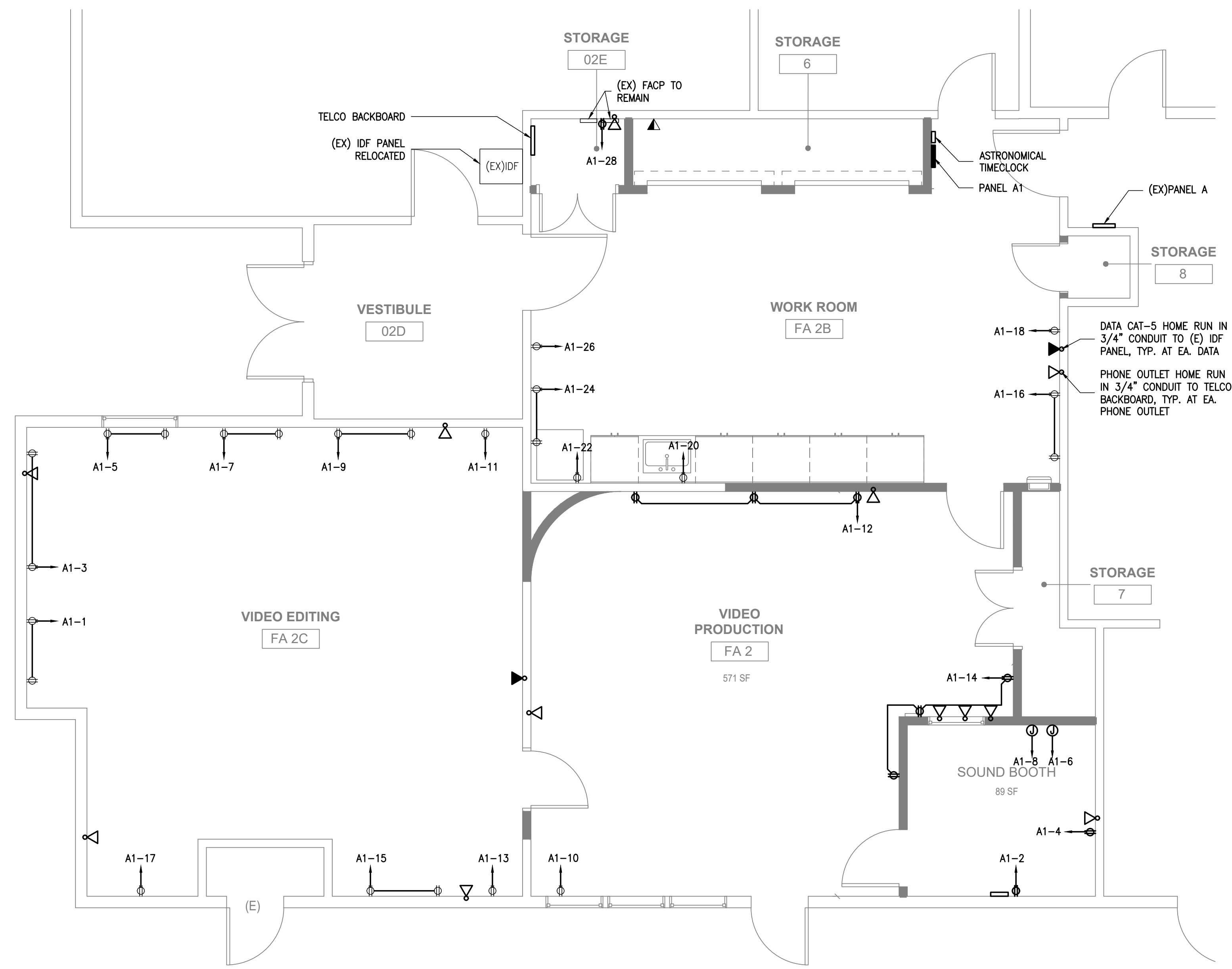
AD3-01 SHEET E2.0 – Electrical Demo Plan
Contractor shall replace existing sheet E2.0 Electrical Demo Plan with the revised sheet E2.0 Electrical Demo Plan attached herein.

AD3-02 SHEET E3.0 – Electrical Power and Lighting Plan
Contractor shall replace existing sheet E3.0 Electrical Power and Lighting Plan with the revised sheet E3.0 Electrical Power and Lighting Plan attached herein.

RFI LOG:

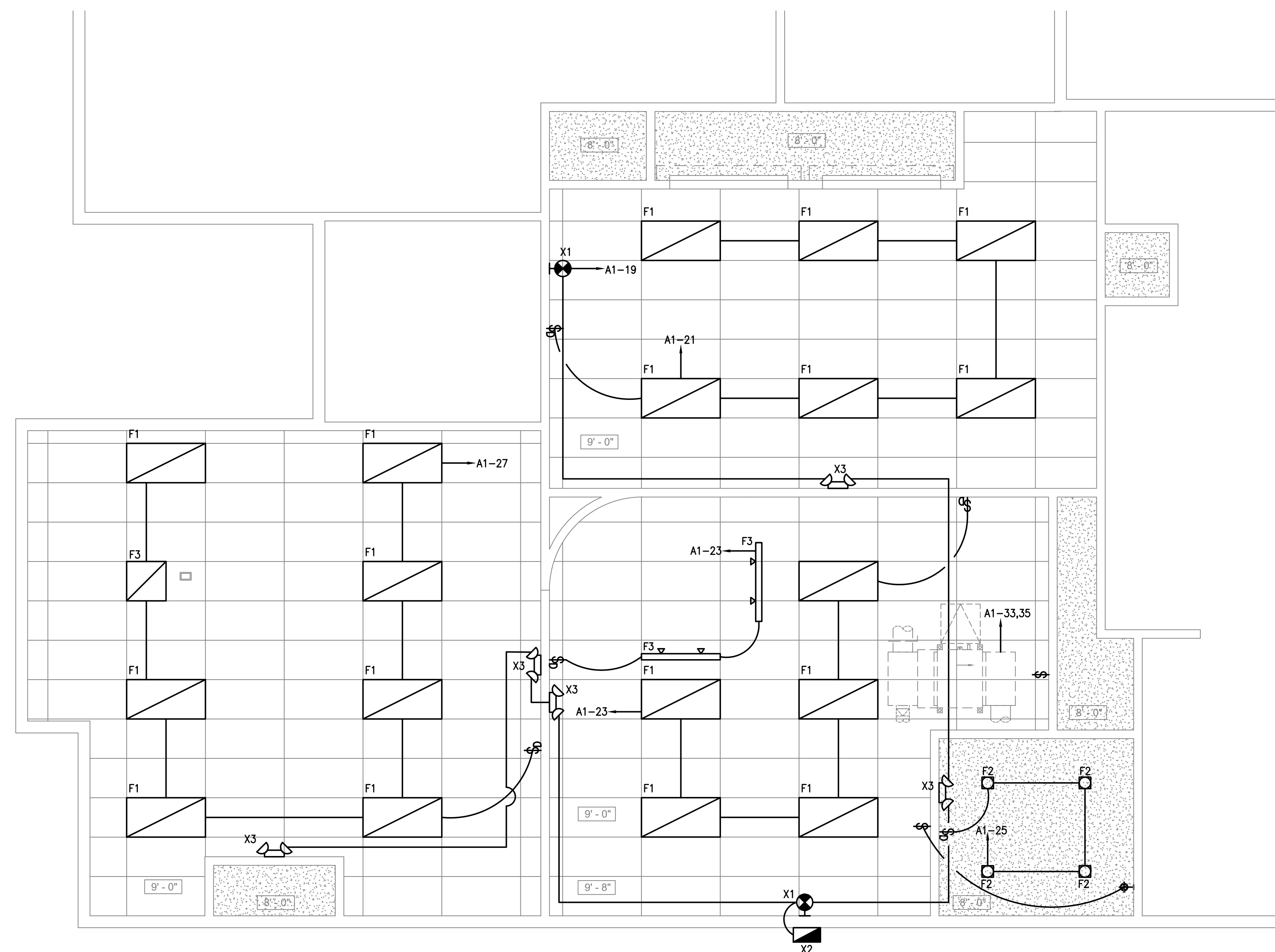
AD3-03 Refer to RFI Log attached herein for A/E Team RFI responses.

END OF ADDENDUM NO. 3



POWER PLAN - VE ROOM

SCALE: 1/4" = 1'-0"



LIGHTING PLAN - VE ROOM

SCALE: 1/4" = 1'-0"



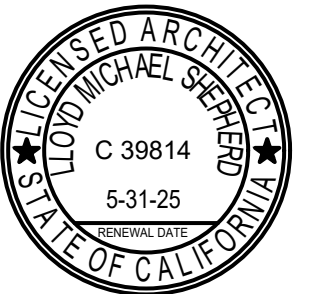
ARCHITECT PBK Architects, Inc.
 FRESNO
 7790 North Palm Avenue
 Fresno, CA 93711
 559-448-8400 P
 559-448-8467 F
 PBK.com

**PORTERVILLE COLLEGE - VIDEO EDITING AND
 PRODUCTION AREA REMODEL**

100 E. COLLEGE AVE
 PORTERVILLE, CA 93257
 STATUS



PROFESSIONAL SEAL



PROJECT NUMBER

S2102800AR

DATE

9/13/23

DSA APPLICATION NO.

02-121796

FILE NO.

15-C1

PTN NO.

N/A

DRAWN BY

XXX

REVISIONS

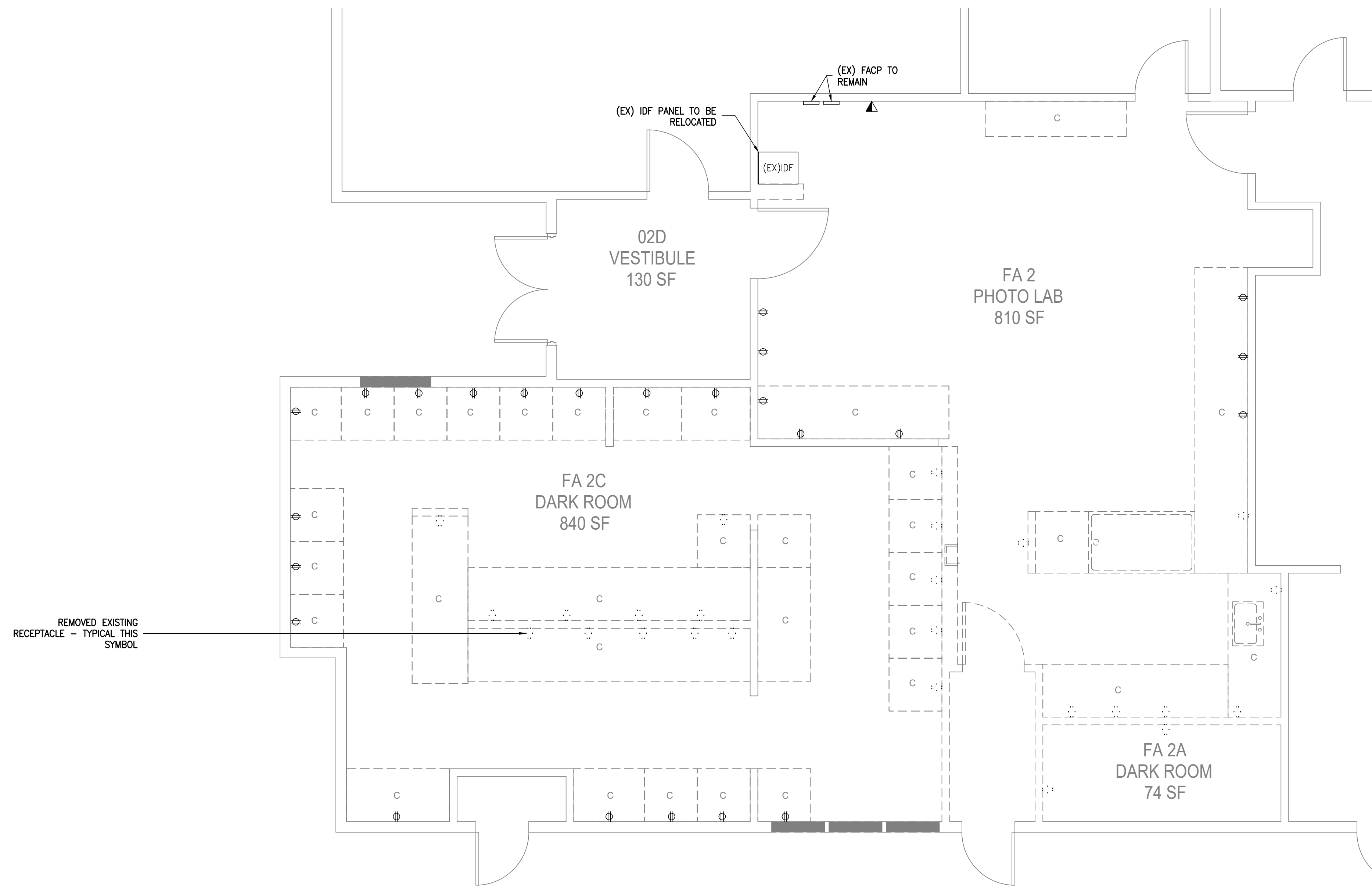
#	DESCRIPTION	DATE

STATUS

**ELECTRICAL
 POWER &
 LIGHTING
 PLAN**

E3.0

CANTELM ENGINEERING
 MECHANICAL/ELECTRICAL
 1800 21 STREET, SUITE C BAKERSFIELD, CA 93301 LICENSE #21190
 TEL: (661) 324-5252 FAX: (661) 324-8439 Cantelmi@cantelmi.net

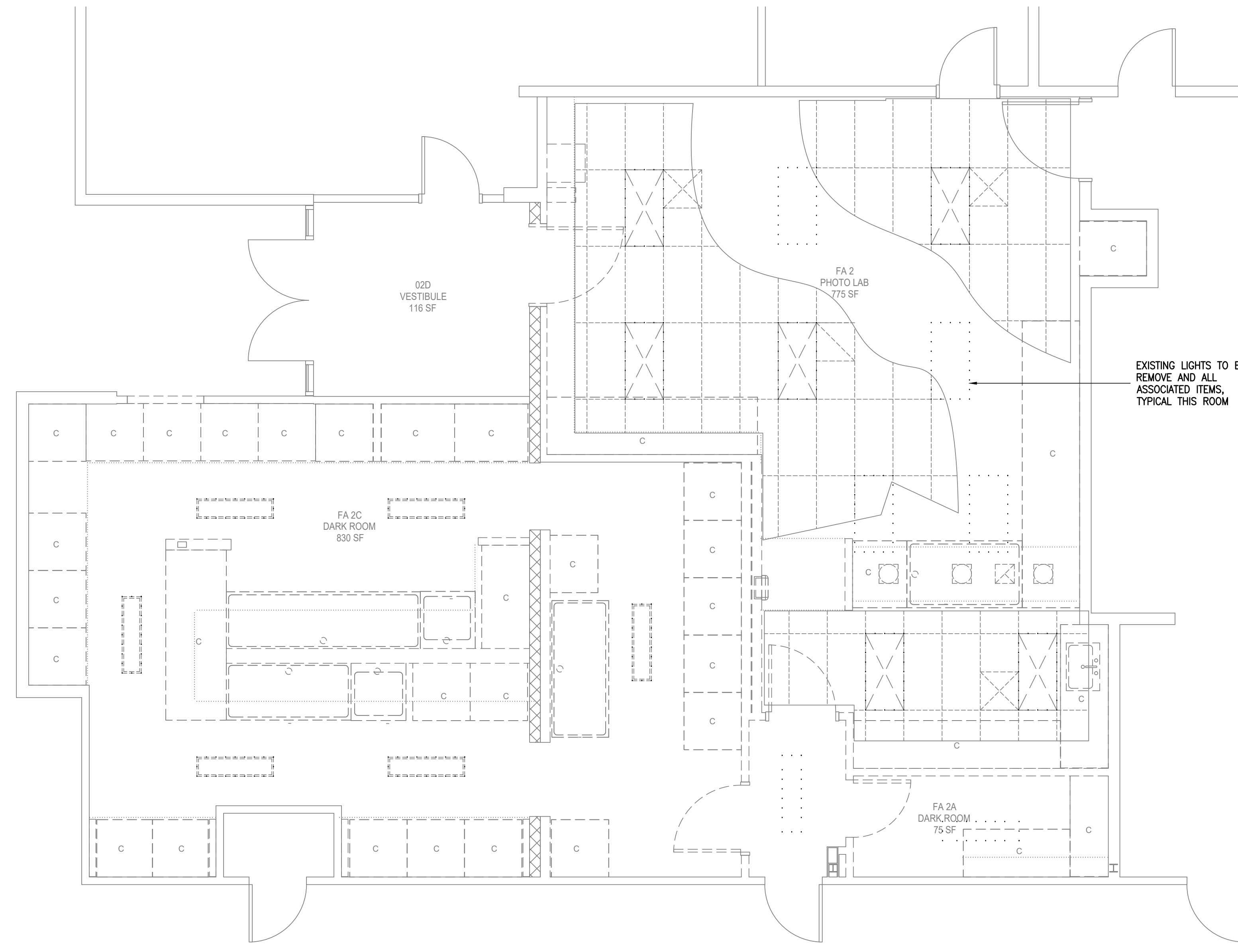


LEGEND:

- - - - - LIGHTS TO BE REMOVED AND ALL ASSOCIATED ITEMS, FIELD VERIFY
- RECEPTACLE TO BE REMOVED, DISCONNECT TO EXISTING CIRCUIT, FIELD VERIFY
- ⊕ EXISTING RECEPTACLE TO REMAIN, FIELD VERIFY EXACT LOCATION

ELECTRICAL DEMO POWER PLAN - VE ROOM

SCALE: 1/4" = 1'-0"



ELECTRICAL DEMO LIGHTING PLAN - VE ROOM

SCALE: 1/4" = 1'-0"



ARCHITECT PBK Architects, Inc.
 FRESNO
 7790 North Palm Avenue
 Fresno, CA 93711
 559-448-8400 P
 559-448-8467 F
 PBK.com

PORTERVILLE COLLEGE - VIDEO EDITING AND PRODUCTION AREA REMODEL

100 E. COLLEGE AVE.
 PORTERVILLE, CA 93257
 STATUS



PROJECT NUMBER
S2102800AR

DATE
9/13/23

DSA APPLICATION NO.
02-121796

FILE NO.
15-C1

PTN NO.
N/A

DRAWN BY
XXX

REVISIONS

#	DESCRIPTION	DATE

STATUS
ELECTRICAL DEMO PLAN

E2.0

CANTELMI ENGINEERING
 MECHANICAL/ELECTRICAL
 1800 21 STREET, SUITE C BAKERSFIELD, CA 93301 LICENSE #21190
 TEL: (661) 324-5252 FAX: (661) 324-8439 Cantelmi@cantelmi.net



PRE-BID REQUEST FOR INFORMATION LOG

ARCHITECT'S PROJECT NO: S2102800AR
 PROJECT NAME: Porterville College Fine Arts Darkroom
 REFERENCE AND DATE: Addendum No. 3 - 03/08/2024
 DSA File No: 15-C1
 DSA App No: 02-121796

RFI #	DATE RECEIVED	QUESTION	CONTRACTOR/SUBCONTRACTOR TRADE	RESPONSE	TO	DATE RETURNED
1	2/29/24	Please clarify the Interior Wall Finishes. The various cross hatches shown on the Interior Wall Legend on sheet A7.1 are difficult to clearly differentiate when comparing to the cross hatching shown on different areas of the walls. Can the walls be labeled with the required finish?	McMurtrey Lince, Inc.	Interior wall finishes are clearly identified in the Interior elevation sheet. Wall tags are a preference. Contract Documents provide clear and concise information.	PBK	3/5/24
2	2/29/24	The wall finishes as shown on the Interior Elevations sheet A7.1 do not seem to match the finishes noted on the finish schedule on sheet A2.2. Please clarify. Several walls are indicated to have vinyl tackboard on the finish schedule but vinyl tackboard is not shown on Interior Elevations.	McMurtrey Lince, Inc.	Interior wall finishes are clearly identified in the Interior elevation sheet. Wall tags are a preference. Contract Documents provide clear and concise information.	PBK	3/5/24
3	2/29/24	The finish schedule on sheet A2.2 includes the abbreviation "SEP". Please clarify.	McMurtrey Lince, Inc.	SEP is incorrect. It shall state SGP - Semigloss paint	PBK	3/5/24
4	2/29/24	The finish schedule on sheet A2.2 indicates acoustic panels on the walls of the Sound Booth. The color schedule on sheet A2.2 calls for Soundsoak Acoustic Panels by Armstrong. The project manual includes specs. For Acoustical Wall Panels, for Fixed Sound Absorbive Panels and for Fixed Sound-Reflective Panels. These specs. include a variety of sound panels by several manufacturers (but not Armstrong). Please clarify	McMurtrey Lince, Inc.	Delete Specification Sections 09 72 00 - Acoustical Wall Panels and 09 84 16 - Fixed Sound-Reflective Panels.	PBK	3/6/24
5	2/29/24	The ceiling of the Sound Booth is shown with a diagonal hatch on the Reflected Ceiling plan on sheet A3.1. The ceiling legend on this sheet does not include a legend for a diagonal cross hatch. Please clarify the finish for the ceiling in the Sound Booth.	McMurtrey Lince, Inc.	Hard ceiling with Fixed Sound-Absorptive Panels_ per specification section 09 84 13.	PBK	3/5/24
6	2/29/24	The Reflected Ceiling plan on sheet A3.1 does not differentiate between any existing or new ceiling finishes. Are all of the ceiling finishes shown new?	McMurtrey Lince, Inc.	Yes.	PBK	3/5/24
7	2/29/24	Please clarify where the spec. section 13 21 48 Sound Conditioned Rooms is used. We do not see it referenced on the plans.	McMurtrey Lince, Inc.	Delete Specification Section 13 21 48 - Sound-Conditioned Rooms	PBK	3/5/24
8	2/29/24	Please clarify what is to be included in the bid for Assistive Listening Systems as shown in spec. 24 51 26. Is this included in bid.	McMurtrey Lince, Inc.	Yes, Assistive Listening is required. The specification reference you mentioned is incorrect. The correct specification section we believe you are referring to is Specification Section 27 51 26.	PBK	3/5/24
9	2/29/24	Please clarify the requirements for Data and Telecommunications.	McMurtrey Lince, Inc.	noted locations of phone & data on plan	Cantelmi	3/8/24

RFI #	DATE RECEIVED	QUESTION	CONTRACTOR/SUBCONTRACTOR TRADE	RESPONSE	TO	DATE RETURNED
10	2/29/24	The scope of work on sheet T1 indicates that Remediation of Lead and Asbestos is included. Please provide an abatement report for the project and clarify the scope of work for Remediation.	McMurtrey Lince, Inc.	Refer to addendum No. 2. No asbestos otr lead remediation required.	PBK	3/5/24
11	2/29/24	The adjacent project for the Career Center calls for Wall Talkers. Please verify that Wall Talkers are not included in the Video Lab.	McMurtrey Lince, Inc.	Wall talkers are not part of this project	PBK	3/5/24
12	2/29/24	The specs. For the roll-up wood doors, section 08 33 13 are unclear. Please clarify. Required hardware, manual lift, crank operated or factory finish or field finished, wood splices.	McMurtrey Lince, Inc.	Standard cabinet lock, manual lift, factory finish	PBK	3/5/24
13	2/29/24	Is it acceptable to provide an alternate but equal product for the Roll-Up Wood Doors? Please verify if Wayne Dalton 530 series doors may be used (see attached brochure).	McMurtrey Lince, Inc.	Refer to Specification section	PBK	3/5/24
14	2/29/24	Spec. section 13 21 48 Sound-Conditioning Rooms appears to be for a prefabricated modular enclosure. Please verify that a prefabricated modular enclosure is not required for this project. Do any portions of this spec. apply to this project?	McMurtrey Lince, Inc.	Specification shall be deleted from the project scope	PBK	3/5/24
15	2/29/24	Sheet A2.2 shows an area of concrete floor in the Video Production room with a "P4" call out. Please verify that the "P4" designates a paint color for this concrete. The finish schedule indicated "SL" at the concrete areas. Do all concrete areas require the "P4" paint finish? The color schedule indicated that "P4" is a Sherwin Williams product. Please provide information for the correct product to use.	McMurtrey Lince, Inc.	Sealed concrete required for flooring in te concrete areas.	PBK	3/5/24
16	2/29/24	General Note 3 on sheet A3.1 refers to Technology drawings. Technology drawings are not included in the bid set of drawings. Are Technology drawings available?	McMurtrey Lince, Inc.	No technology drawings available, added short throw projector on plan with receptacle at 96" AFF to accompany data outlet	Cantelmi	3/8/24
17	2/29/24	Sheet A3.1 Keynote 02.M04 indicates "(N) location of relocated electrical equipment". Please clarify what equipment is this referring to? Where is it being relocated from? The electrical plans do not show this equipment. Please clarify what is required here.	McMurtrey Lince, Inc.	Noted locations of existing equipment to remain & to be relocated	Cantelmi	3/8/24
18	2/29/24	Please provide location of electrical panels A and A1 as shown on sheet E4.0.	McMurtrey Lince, Inc.	Refer to sheet E3.0 for panel locations	Cantelmi	3/8/24
19	2/29/24	Please provide location of Telco Backboard as shown in detail 9 on sheet E5.0.	McMurtrey Lince, Inc.	N/A	Cantelmi	3/8/24
20	2/29/24	Please provide location of Astronomical Timeclock as shown in detail 4 on sheet E5.0.	McMurtrey Lince, Inc.	Refer to sheet E3.0	Cantelmi	3/8/24
21	2/29/24	The lighting schedule on sheet E4.0 calls for an exterior egress light "X2" and notes 29 ft apart max distance. The lighting plan on sheet E3.0 only shows 1 ea. X2 fixture. Please verify that only 1 ea. Fixture type X2 is required.	McMurtrey Lince, Inc.	1 fixture of X2 at exterior door, see sheet E3.0	Cantelmi	3/8/24
22	2/29/24	The lighting schedule on sheet E4.0 calls for an interior egress light "X3" and notes 18 ft. apart max distance. The lighting plan on sheet E3.0 only shows 3 ea. X3 fixture. Please verify that only 3 ea. Fixture type X3 is required.	McMurtrey Lince, Inc.	5 fixtures of X3 required. Missing fixtures noted on sheets.	Cantelmi	3/8/24

RFI #	DATE RECEIVED	QUESTION	CONTRACTOR/SUBCONTRACTOR TRADE	RESPONSE	TO	DATE RETURNED
23	2/29/24	Please verify that a fire alarm system is not required for this project.	McMurtrey Lince, Inc.	refer to fire alarm (FA) sheets.	Cantelmi	
24	3/4/24	What is the estimated start date?	Ken Smith Construction	1-Apr-24	PBK	3/5/24
25	3/4/24	What is the estimated duration of this project?	Ken Smith Construction	90 calendar days	PBK	3/5/24
26	3/4/24	What is the estimated value of this project?	Ken Smith Construction	The project estimate is \$750,000.00 (Seven Hundred Fifty Thousand Dollars)	PBK	3/5/24
27	3/4/24	Please confirm that the liquidated damages are set at \$100/calendar day.	Ken Smith Construction	Liquidated damages are \$1,000.00 per calendar day	PBK	3/5/24
28	3/4/24	Is retainage set at 5% or 10%?	Ken Smith Construction	5% retainage will apply for the duration of the project.	PBK	3/5/24